

VOR/DME STS 113.0 Chan 77	APP CRS 146°	Rwy Idg TDZE 122 Apt Elev 129	5880
----------------------------------------	------------------------	---------------------------------------------------	-------------

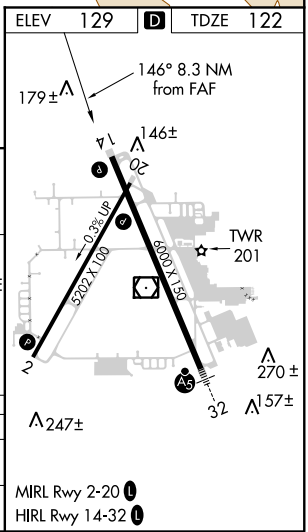
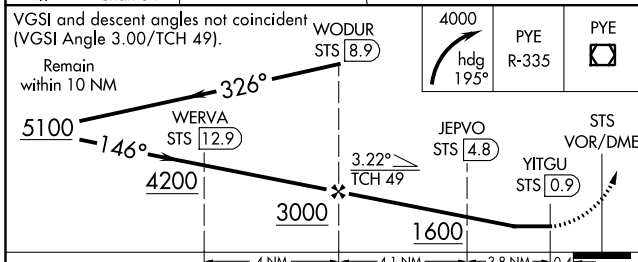
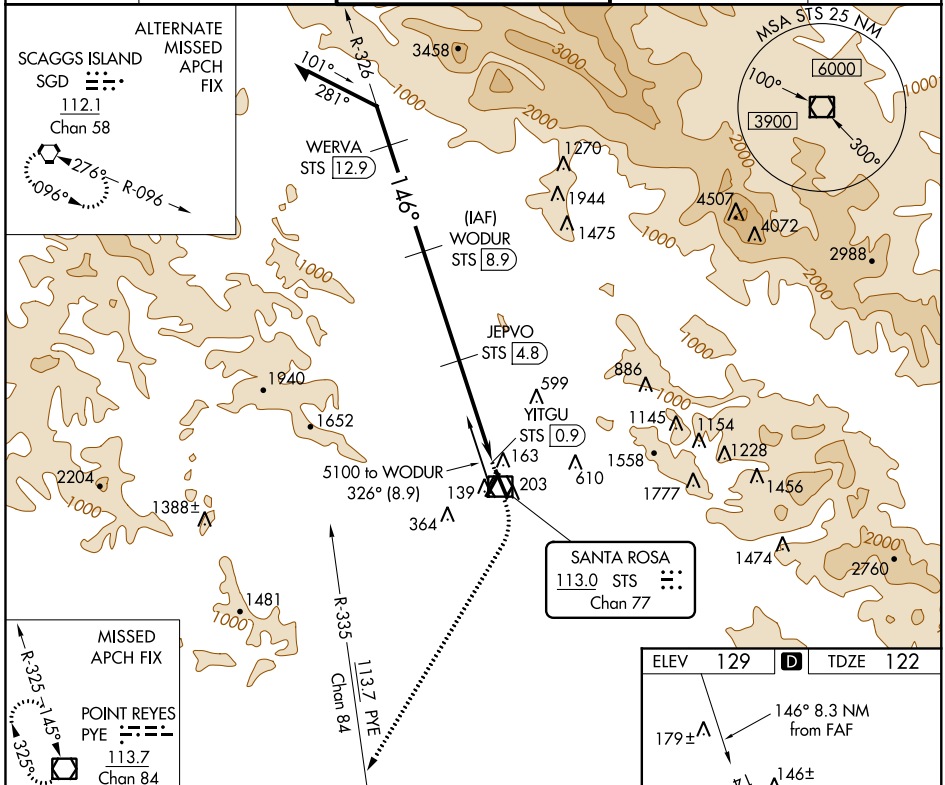
VOR/DME RWY 14

CHARLES M SCHULZ-SONOMA COUNTY (STS)

⚠ Helicopter visibility reduction below ¼ SM NA.
⚠ When local altimeter setting not received, use Petaluma altimeter setting and increase all MDA 60 feet, and increase S-14 Cats C and D visibility ½ mile. Increase Circling Cat A visibility ¼ mile.

MISSED APPROACH: Climbing right turn to 4000 on heading 195° and on PYE VOR/DME R-335 to PYE VOR/DME and hold.

ATIS 120.55	OAKLAND CENTER 127.8 353.5	SANTA ROSA TOWER ★ 118.5 (CTAF) 363.0	GND CON 121.9	UNICOM 122.95
-----------------------	--------------------------------------	-------------------------------------------------	-------------------------	-------------------------



CATEGORY	A	B	C	D
S-14	880-1 758 (800-1)	880-1¼ 758 (800-1¼)	880-2½ 758 (800-2½)	
C CIRCLING	880-1 751 (800-1)	880-1¼ 751 (800-1¼)	1080-3 951 (1000-3)	1420-3 1291 (1300-3)

SW-2, 30 JAN 2020 to 27 FEB 2020

SW-2, 30 JAN 2020 to 27 FEB 2020