

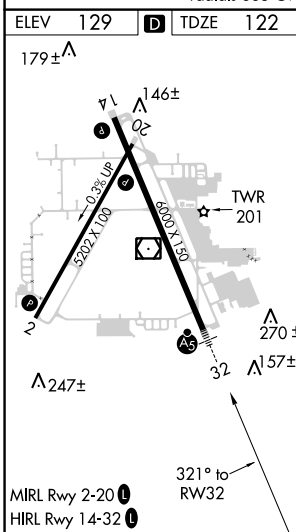
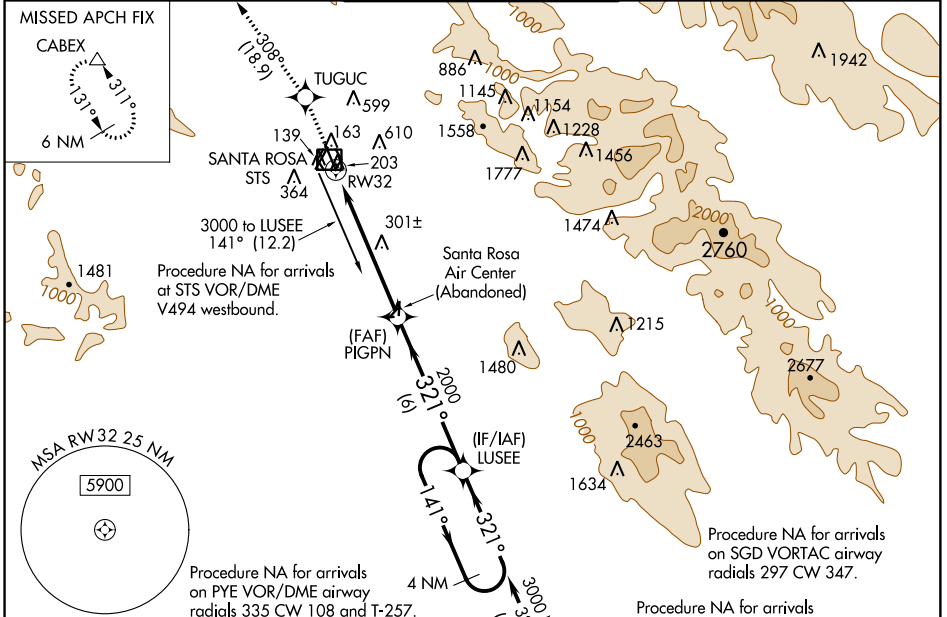
WAAS CH <b>72611</b> <b>W32A</b>	APP CRS <b>321°</b>	Rwy Ldg TDZE <b>122</b> Apt Elev <b>129</b>	<b>6000</b>
--	------------------------	---	-------------

# RNAV (GPS) RWY 32

CHARLES M SCHULZ-SONOMA COUNTY (STS)

RNP APCH	MALSR	MISSED APPROACH: Climb to 6000 direct TUGUC and on track 308° to CABEX and hold, continue climb-in-hold to 6000.
----------	-------	--

ATIS <b>120.55</b>	OAKLAND CENTER <b>127.8 353.5</b>	SANTA ROSA TOWER* <b>118.5 (CTAF) 0 363.0</b>	GND CON <b>121.9</b>	UNICOM <b>122.95</b>
-----------------------	--------------------------------------	--	-------------------------	-------------------------



ELEV 129	TDZE 122	SCAGGGS ISLAND SGD	
6000	TUGUC	tr 308°	CABEX
* LNAV only.		LUSEE 4 NM Holding Pattern	
* 1.2 NM to RW32		141° → 3000	
RW32		← 321°	
1.2		4.5 NM	
CATEGORY		GP 3.00° TCH 53	
LPV DA #	322/24	200 (200-½)	
LNAV/VNAV DA	570/50	448 (500-1)	
LNAV MDA	560/24	438 (500-½)	560/40 438 (500-¾)
CIRCLING	600-1	680-1	1080-3 1420-3
	471 (500-1)	551 (600-1)	951 (1000-3) 1291 (1300-3)

SW-2, 30 JAN 2020 to 27 FEB 2020

SW-2, 30 JAN 2020 to 27 FEB 2020