

FORT CAMPBELL, KENTUCKY

ILS or LOC RWY 23

LOC I-FKP 111.9 Chan 56	APCH CRS 225°	Rwy Idg 10,926 TDZE 571 Arpt Elev 571
---	-------------------------	--

AL-679 [USA]

CAMPBELL AAF (KHOP)

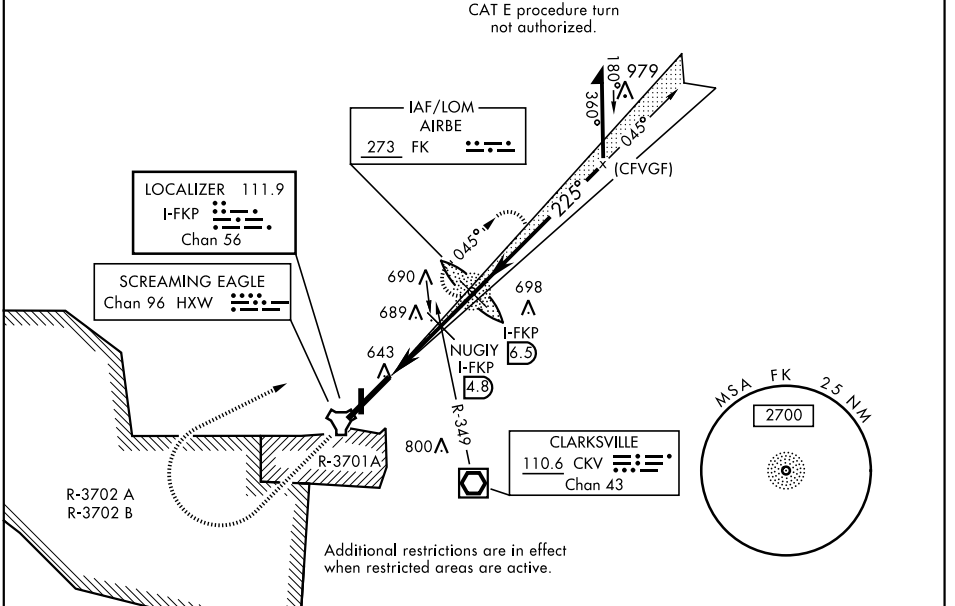
▼ * When ALS inop, increase CAT E RVR to 40.
RVR 18 authorized with use of FD or AP or HUD to DA.



MISSED APPROACH: Climb to 1200 then climbing right turn to 2500 direct AIRBE LOM/I-FKP 6.5 DME, continue climb-in-hold to 2500.

ATIS 125.175 308.4	CAMPBELL APP CON 118.1 269.525	CAMPBELL TOWER 120.9 278.8	GND CON 121.8 266.8	CLNC DEL 138.8	ASR/PAR
------------------------------	--	--------------------------------------	-------------------------------	--------------------------	---------

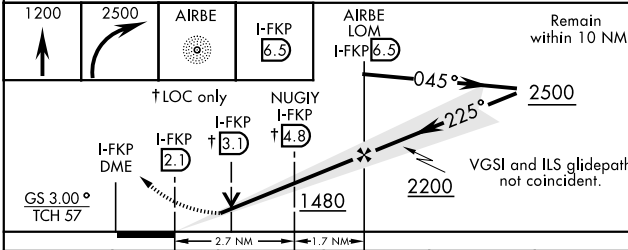
** When ALS inop, increase CAT CDE RVR to 55.
*** Circling not authorized SE of Rwy 5-23.



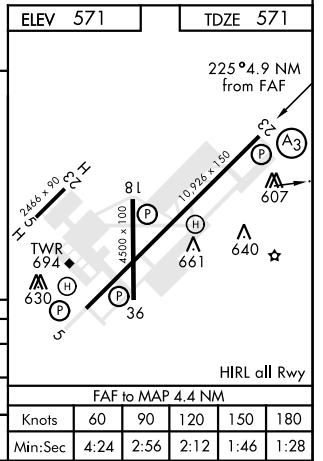
Additional restrictions are in effect when restricted areas are active.

RADAR REQUIRED

(for procedure entry)



CATEGORY	A	B	C	D	E
S-ILS 23 *	771/24		200	(200-½)	
S-LOC 23 **	940/24	369 (400-½)	940/40 369 (400-¾)		
*** CIRCLING	1060-1 489 (500-1)	1060-1½ 489 (500-1½)		1140-2 569 (600-2)	



FAF to MAP 4.4 NM					
Knots	60	90	120	150	180
Min:Sec	4:24	2:56	2:12	1:46	1:28

FORT CAMPBELL, KENTUCKY
Amdt 13 05DEC19

36° 40' N - 87° 30' W

CAMPBELL AAF (KHOP)

ILS or LOC RWY 23

SE-1, 30 JAN 2020 to 27 FEB 2020

SE-1, 30 JAN 2020 to 27 FEB 2020