

WAAS CH 42800 W01A	APP CRS 014°	Rwy ldg TDZE Apt Elev	8782 2170 2181
--	------------------------	-----------------------------	---

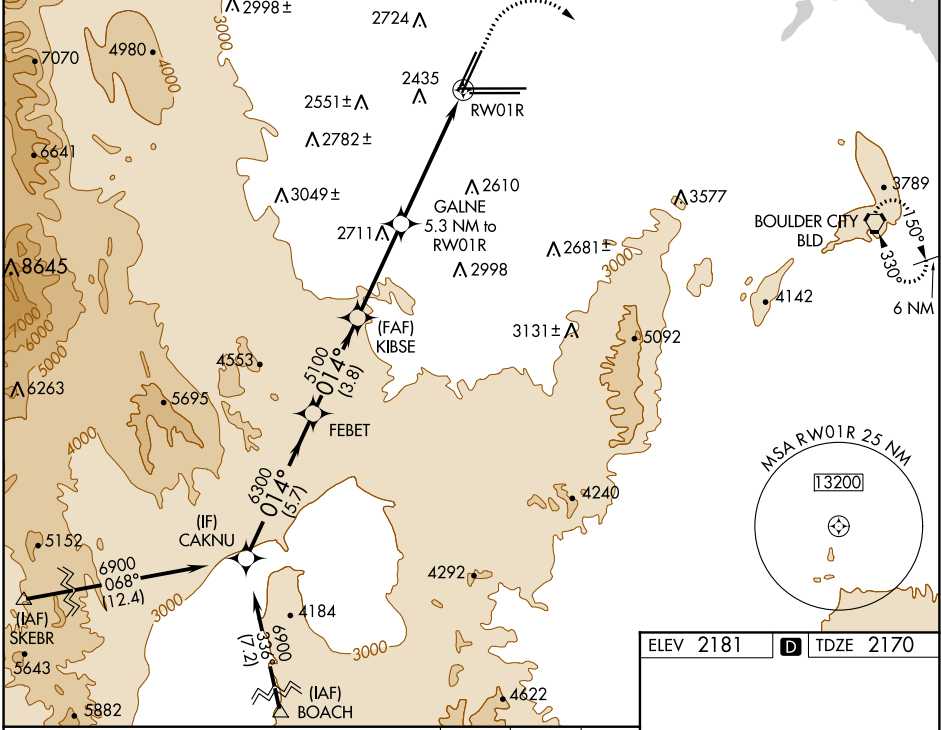
RNAV (GPS) RWY 1R

MC CARRAN INTL (LAS)

⚠ For uncompensated Baro-VNAV systems, LNAV/VNAV NA below -1°C (31°F) or above 52°C (126°F). Rwy 1R helicopter visibility reduction below 3/4 SM NA. DME/DME RNP-0.3 NA.

MISSED APPROACH: Climb to 2800 then climbing right turn to 6000 direct BLD VORTAC and hold, continue climb-in-hold to 6000.

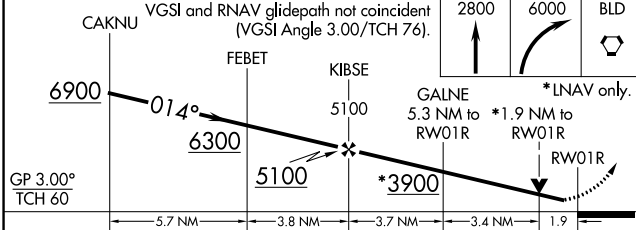
D-ATIS 132.4	LAS VEGAS APP CON 125.025 379.15 (West) 125.6 282.2 (East)	LAS VEGAS TOWER 118.75 257.8 (Rwy 1L/19R, 1R/19L) 119.9 257.8 (Rwy 8L/26R, 8R/26L)	GND CON 121.1 270.8 E of 1R/19L 121.9 254.3 W of 1R/19L	CLNC DEL 118.0	CPDLC
------------------------	--	--	---	--------------------------	-------



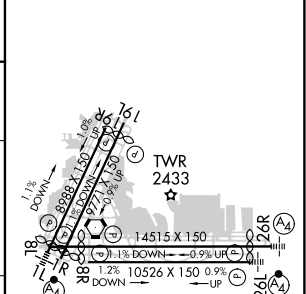
SW-4, 30 JAN 2020 to 27 FEB 2020

SW-4, 30 JAN 2020 to 27 FEB 2020

ELEV 2181	D TDZE 2170
-----------	--------------------



GP 3.00° TCH 60	CAKNU	FEBET	KIBSE	GALNE	RWY 1R
CATEGORY	A	B	C	D	
LPV DA	2468-7/8		298 (300-7/8)		
LNAV/VNAV DA	2633-11/2		463 (500-11/2)		
LNAV MDA	2860-1 690 (700-1)		2860-2 690 (700-2)		
C CIRCLING	3020-1 1/4 839 (900-1 1/4)	3040-1 1/4 859 (900-1 1/4)	3100-2 3/4 919 (1000-2 3/4)	3540-3 1359 (1400-3)	



REIL Rwy 1R, 8R, 19L and 19R
MIRL Rwy 1R-19L
HIRL Rwy 1L-19R, 8L-26R and 8R-26L