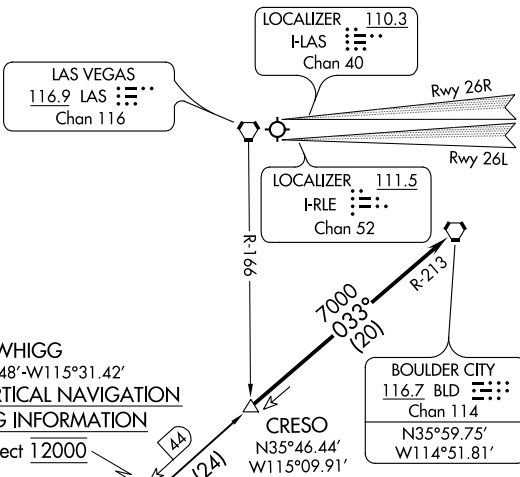


CRESO FOUR ARRIVAL

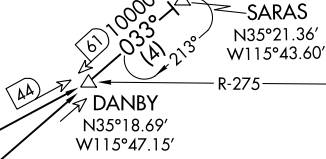
AL-662 (FAA)

LAS VEGAS APP CON
118.4 307.25
LAS VEGAS TOWER
118.75 257.8 (Rwy 1L/19R, 1R/19L)
119.9 257.8 (Rwy 8L/26R, 8R/26L)
D-ATIS
132.4



WHIGG
N35°30.48'-W115°31.42'
TURBOJET VERTICAL NAVIGATION PLANNING INFORMATION
Expect 12000

JOKUR
N35°02.51'-W116°23.98'
TURBOJET VERTICAL NAVIGATION PLANNING INFORMATION
Expect FL240



HECTOR
112.7 HEC
Chan 74
N34°47.82' W116°27.78'
L-7, H-4

DAGGETT
113.2 DAG
Chan 79
N34°57.75' W116°34.69'
L-7, H-4

GOFFS
114.4 GFS
Chan 91

NOTE: Chart not to scale.

ARRIVAL ROUTE DESCRIPTION

DAGGETT TRANSITION (DAG.CRESO4): From over DAG VORTAC via DAG R-047 and BLD R-213 to CRESO, thence. . .

HECTOR TRANSITION (HEC.CRESO4): From over HEC VORTAC via HEC R-032 and BLD R-213 to CRESO, thence. . .

. . . From over CRESO then on BLD R-213 to BLD VORTAC. Runways 1, 8, and 19 expect RADAR vectors to final approach course. From BLD VORTAC, expect ILS approach Runway 26L/R.

CRESO FOUR ARRIVAL

SW-4, 30 JAN 2020 to 27 FEB 2020

SW-4, 30 JAN 2020 to 27 FEB 2020