

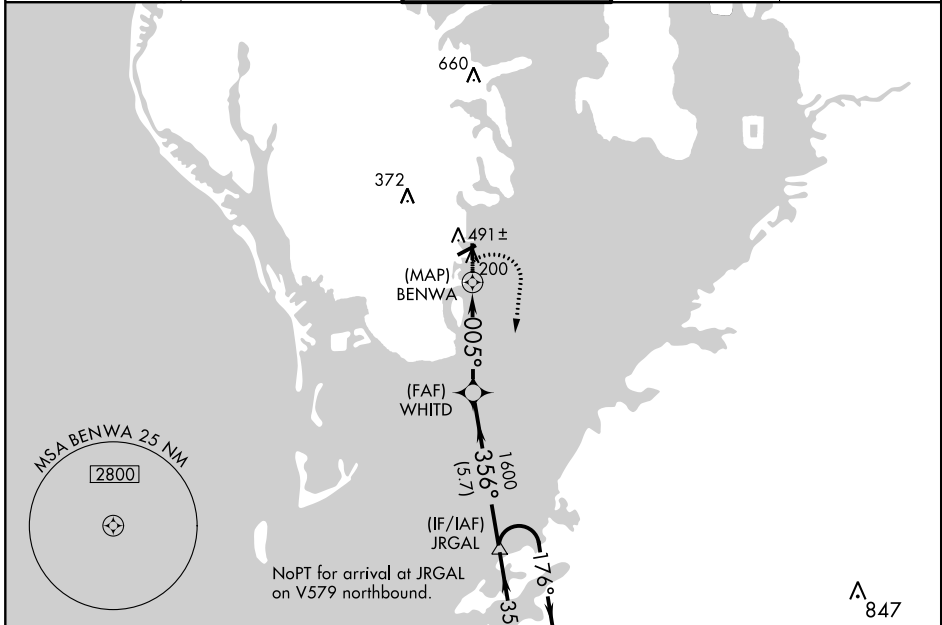
APP CRS	Rwy Idg	<b>2864</b>
<b>005°</b>	TDZE	<b>6</b>
	Apt Elev	<b>7</b>

# RNAV (GPS) RWY 36

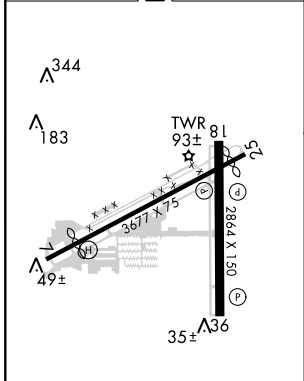
ALBERT WHITTED (SPG)

RNP APCH.	MISSED APPROACH: Climb to 500 then climbing right turn to 2000 direct to JRGAL and hold.
<b>▼</b> <b>▲</b>	Procedure NA at night. Rwy 36 helicopter visibility reduction below 1 SM NA.

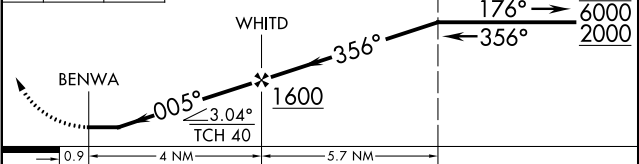
ASOS <b>118.875</b>	TAMPA APP CON <b>119.65 316.05 (EAST)</b> <b>125.3 316.05 (WEST)</b>	ALBERT WHITTED TOWER * <b>127.4 (CTAF) 0 257.6</b>	GND CON <b>121.8</b>	UNICOM <b>122.95</b>
------------------------	--	---	-------------------------	-------------------------



ELEV 7	<b>D</b>	TDZE 6
--------	----------	--------



500	2000	JRGAL	VGS1 and descent angles not coincident (VGS1 Angle 4.00/TCH 40).	4 NM Holding Pattern



CATEGORY	A	B	C	D
LNAV MDA	540-1	534 (600-1)		NA
<b>C</b> CIRCLING	860-1¼	853 (900-1¼)		NA

MIRL Rwy 7-25 and 18-36  
REIL Rwy 7, 18, 25 and 36

SE-3, 30 JAN 2020 to 27 FEB 2020

SE-3, 30 JAN 2020 to 27 FEB 2020