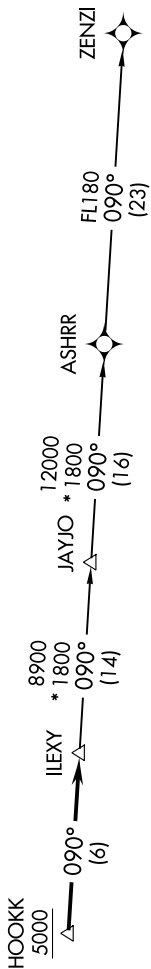


SC-3, 30 JAN 2020 to 27 FEB 2020

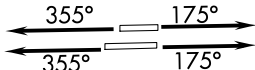
D-ATIS  
124.4  
CLNC DEL  
125.5 263.0  
CPDIC  
GND CON  
121.9 348.6  
AUSTIN TOWER  
121.0 281.5  
AUSTIN DEP CON  
127.225 317.65

TOP ALTITUDE:  
ASSIGNED BY ATC

NOTE: RADAR required.  
NOTE: DME/DME/IRU or GPS required.  
NOTE: RNAV-1.  
NOTE: Houston terminal area arrivals expect routing from ILEXY.  
NOTE: JAYJO transition to join V306 only.



TAKEOFF MINIMUMS  
Rwys 17L/R: Standard.  
Rwys 35L/R: Standard with minimum  
climb of 240' per NM to 2600.



NOTE: Chart not to scale.

DEPARTURE ROUTE DESCRIPTION

TAKEOFF RWYS 17L/R: Climb heading 175° or as assigned by ATC for RADAR vectors to cross HOOKK at or above 5000, thence...  
TAKEOFF RWYS 35L/R: Climb heading 355° or as assigned by ATC for RADAR vectors to cross HOOKK at or above 5000, thence...

... on track 90° to ILEXY, then on transition. Maintain altitude assigned by ATC.  
 Expect filed altitude 10 minutes after departure.

JAYJO TRANSITION (ILEXY2.JAYJO):  
ZENZI TRANSITION (ILEXY2.ZENZI):

SC-3, 30 JAN 2020 to 27 FEB 2020