

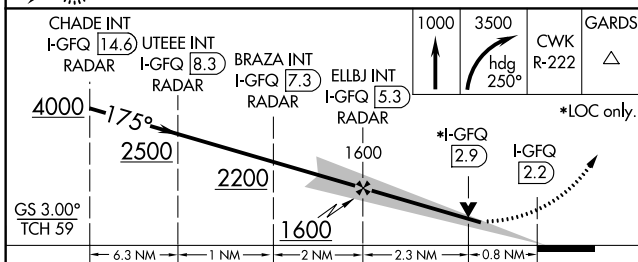
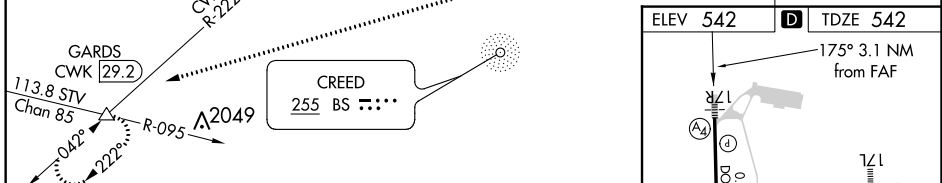
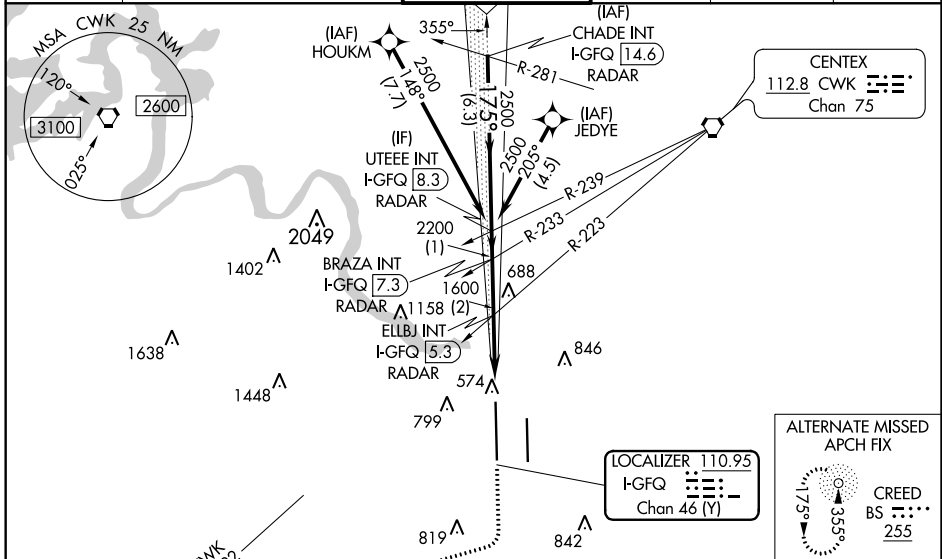
LOC/DME I-GFQ 110.95 Chan 46(Y)	APP CRS 175°	Rwy Idg 12250 TDZE 542 Apt Elev 542
---	------------------------	--

ILS or LOC RWY 17R

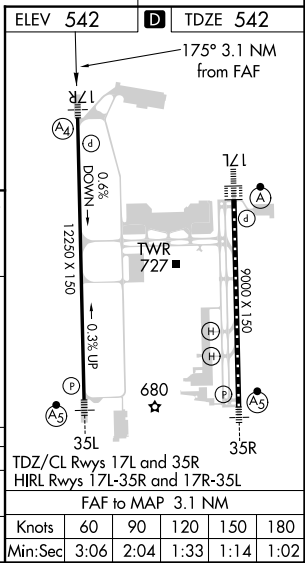
AUSTIN-BERGSTROM INTL (AUS)

RNAV 1 - GPS or RADAR required for procedure entry. From HOUKM, JEDYE: RNAV 1 - GPS required.	MALS ④	MISSED APPROACH: Climb to 1000 then climbing right turn to 3500 on heading 250° and CWK VORTAC R-222 to GARDS INT/CWK 29.2 DME and hold.
<p>Simultaneous approach authorized. For inop ALS, increase S-LOC 17R Cats C/D/E visibility to RVR 4500.</p>		

D-ATIS 124.4	AUSTIN APP CON 127.225 317.65 (EAST) 120.875 270.25 (SOUTH) 119.0 370.85 (WEST)	AUSTIN TOWER 121.0 281.5	GND CON 121.9 348.6	CLNC DEL 125.5 263.0	CPDLC
------------------------	---	------------------------------------	-------------------------------	--------------------------------	-------



CATEGORY	A	B	C	D	E
S-ILS 17R		742/40	200 (200-¾)		
S-LOC 17R		860/40	318 (400-¾)		



SC-3, 30 JAN 2020 to 27 FEB 2020

SC-3, 30 JAN 2020 to 27 FEB 2020