

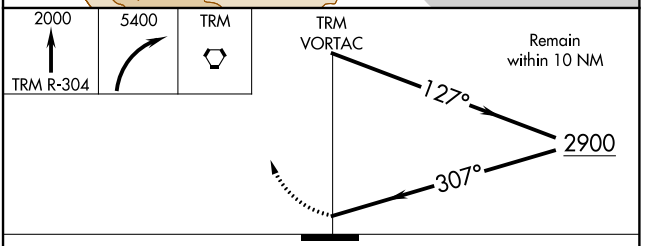
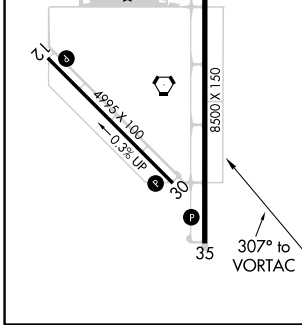
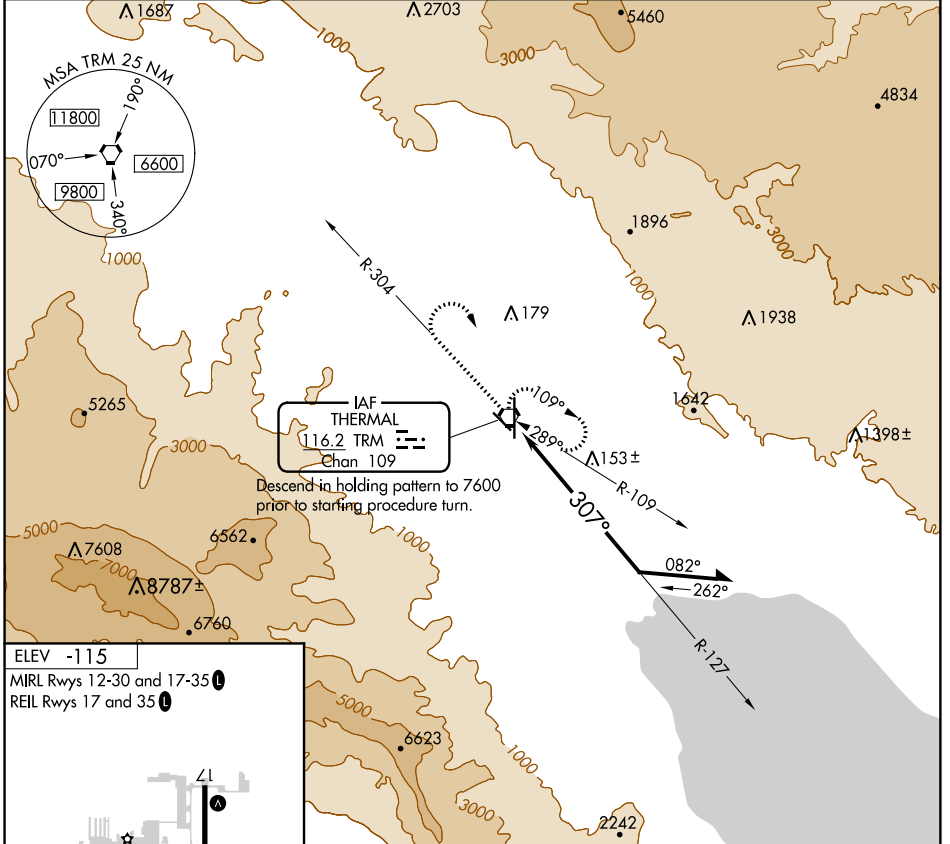
VORTAC TRM <b>116.2</b> Chan <b>109</b>	APP CRS <b>307°</b>	Rwy Idg TDZE Apt Elev	<b>N/A</b> <b>N/A</b> <b>-115</b>
---	------------------------	-----------------------------	---

**VOR-A**

JACQUELINE COCHRAN RGNL (TRM)

**MISSED APPROACH:** Climb to 2000 on TRM VORTAC R-304 then climbing right turn to 5400 direct TRM VORTAC and hold, continue climb-in-hold to 5400.

ASOS <b>118.325</b>	SOCAL APP CON * <b>135.275 251.1</b>	UNICOM <b>123.0</b> (CTAF) <b>0</b>
------------------------	---	--



CATEGORY	A	B	C	D
<b>C</b> CIRCLING	1400-1¼ 1515 (1600-1¼)	1400-1½ 1515 (1600-1½)	1400-3	1515 (1600-3)

SW-3, 30 JAN 2020 to 27 FEB 2020

SW-3, 30 JAN 2020 to 27 FEB 2020