

WAAS CH <b>49100</b> W19A	APP CRS <b>187°</b>	Rwy Idg TDZE Apt Elev	<b>8300</b> <b>26</b> <b>26</b>
---------------------------------	------------------------	-----------------------------	---------------------------------------

# RNAV (GPS) Z RWY 19L

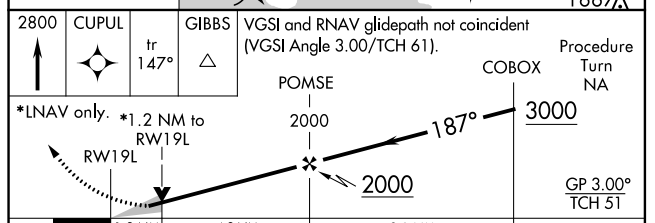
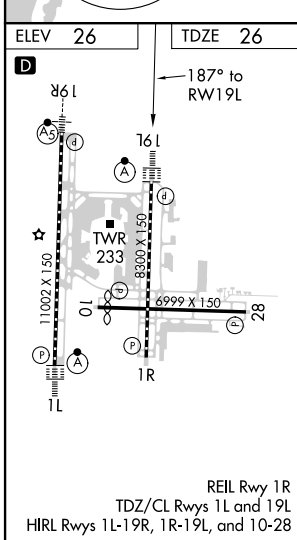
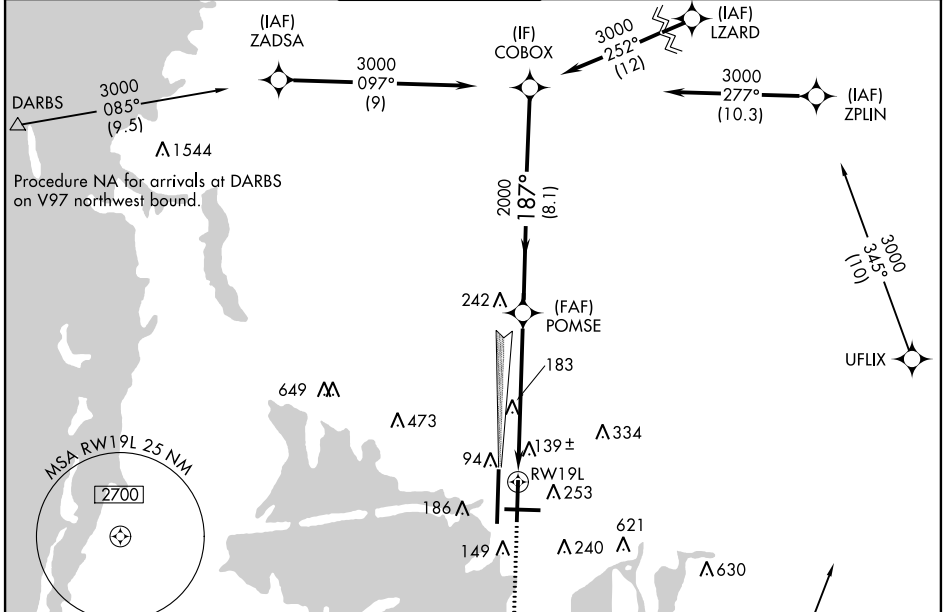
TAMPA INTL (TPA)

**▼** For uncompensated Baro-VNAV systems, LNAV/VNAV NA below -15°C (5°F) or above 43°C (109°F). DME/DME RNP-0.3 NA. Simultaneous approach authorized with Rwy 19R. LNAV procedure NA during simultaneous operations. Use of FD or AP providing RNAV track guidance required during simultaneous operations. \*\* RVR 1800 authorized with use of FD or AP or HUD to DA.

ALSF-2

MISSED APPROACH: Climb to 2800 direct CUPUL and on track 147° to GIBBS and hold.

ARR	D-ATIS	DEP	TAMPA APP CON	TAMPA TOWER	GND CON	CLNC DEL	CPDLC
<b>126.45</b>		<b>128.475</b>	<b>118.5 307.175</b>	<b>119.5 269.4</b>	<b>121.7 269.4</b>	<b>133.6</b>	



CATEGORY	A	B	C	D
LPV DA**	226/24		200 (200-½)	
LNAV/VNAV DA	440/45		414 (500-¾)	
LNAV MDA	460/24	434 (500-½)	460/40	434 (500-¾)
CIRCLING	560-1	534 (600-1)	560-1½ 534 (600-1½)	580-2 554 (600-2)

SE-3, 30 JAN 2020 to 27 FEB 2020

SE-3, 30 JAN 2020 to 27 FEB 2020