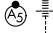


| | |
|------------------------|------------------------|
| APP CRS 100° | Rwy Idg 9003 |
| | TDZE 421 |
| | Apt Elev 421 |

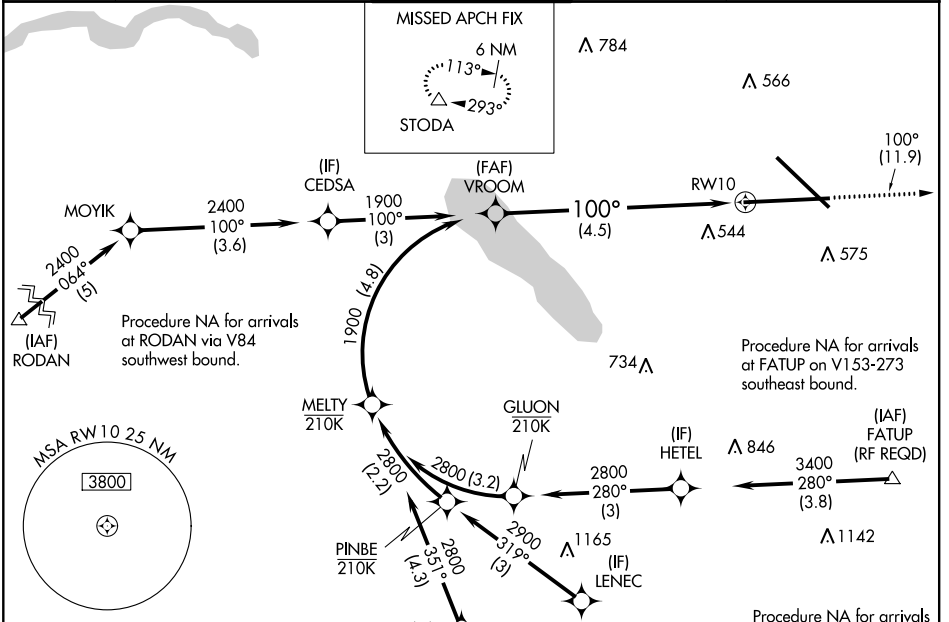
RNAV (RNP) Y RWY 10

SYRACUSE HANCOCK INTL (SYR)

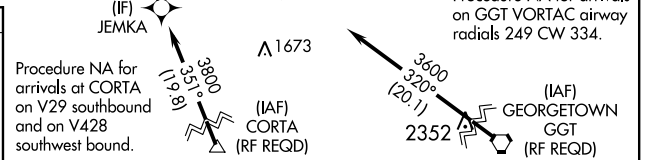
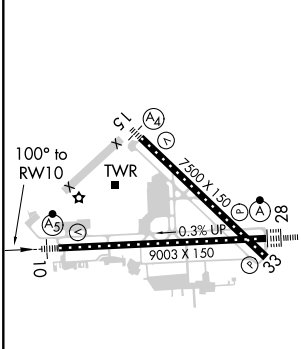
▼ For uncompensated Baro-VNAV systems, procedure NA below -18°C (0°F) or above 54°C (130°F). For inoperative MALSR, increase RNP 0.15 all Cats visibility to 1½. For inoperative MALSR, increase RNP 0.30 all Cats visibility to 1½. GWS required.

MALSR

MISSED APPROACH:
 Climb to 3000 on track 100° to STODA and hold.

| | | | | |
|-------------------------------|---|---|--------------------------------------|--|
| ATIS 124.225 | SYRACUSE APP CON 134.275 279.6 | SYRACUSE TOWER 120.3 239.0 | GND CON 121.7 348.6 | CLNC DEL 125.05 257.775 |
|-------------------------------|---|---|--------------------------------------|--|



| | | |
|----------|----------|----------|
| ELEV 421 | D | TDZE 421 |
|----------|----------|----------|



| | | | | |
|--------------------|---|--------|--------------|---|
| GP 3.00° TCH 55 | See planview for multiple IF locations. | | | |
| CATEGORY | A | B | C | D |
| RNP 0.15 DA | | 816/45 | 395 (400-7%) | |
| RNP 0.30 DA | | 881/55 | 460 (500-1) | |

TDZ/CL Rwy 28
 HIRL Rwy 10-28 and 15-33

AUTHORIZATION REQUIRED

NE-2, 30 JAN 2020 to 27 FEB 2020

NE-2, 30 JAN 2020 to 27 FEB 2020