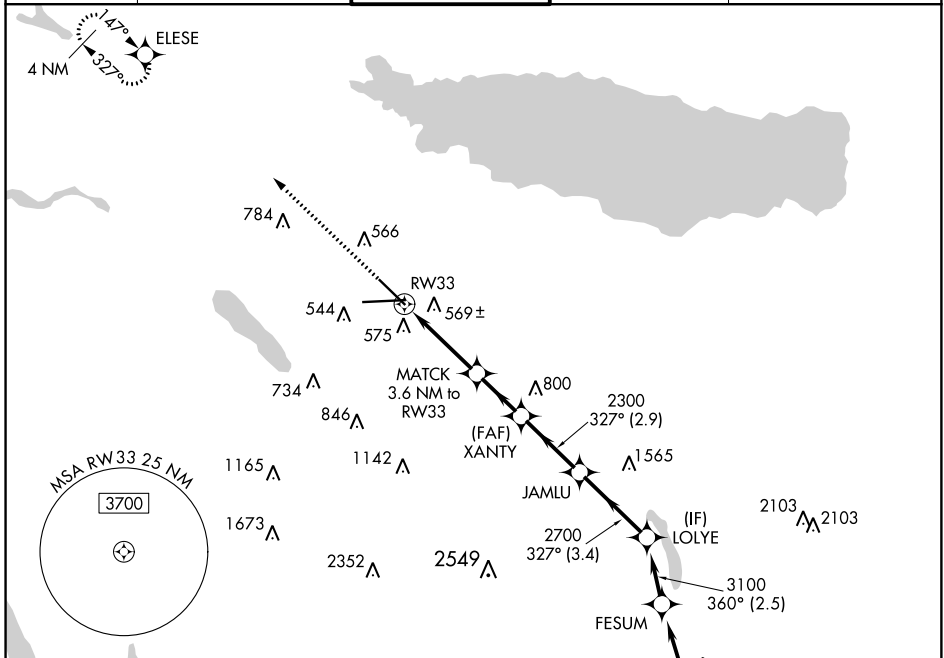


WAAS CH 81823 W33A	APP CRS 327°	Rwy Idg TDZE Apt Elev	7500 409 421
--	------------------------	-----------------------------	---

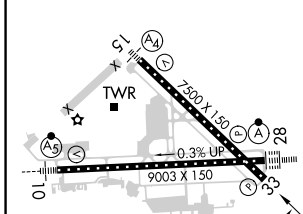
RNAV (GPS) RWY 33

SYRACUSE HANCOCK INTL (SYR)

RNP APCH.		SYRACUSE TOWER 120.3 239.0		GND CON 121.7 348.6		CLNC DEL 125.05 257.775	
▼ Rwy 33 helicopter visibility reduction below ¾ SM NA. For uncompensated ▲ Baro-VNAV systems, LNAV/VNAV NA below -20°C or above 54°C.				MISSED APPROACH: Climb to 3000 direct ELESE and hold.			



ELEV 421	D	TDZE 409
----------	----------	----------



3000	ELESE	MATCH	XANTY	JAMLU	LOLYE
↑	◆	3.6 NM to RW33	2300	2700	3100
*LNAV only	*1.1 NM to RW33	1580*	2300	2700	3100
1.1 NM	2.5 NM	2.2 NM	2.9 NM	3.4 NM	

CATEGORY	A	B	C	D
LPV DA		715/45	306 (300-¾)	
LNAV/VNAV DA		882-1⅓	473 (500-1⅓)	
LNAV MDA	820/55	411 (400-1)	820/60	411 (400-1¼)
C CIRCLING	900-1 479 (500-1)	920-1 499 (500-1)	1020-1½ 599 (600-1½)	1180-2½ 759 (800-2½)

TDZ/CL Rwy 28
HIRL Rwy 10-28 and 15-33

NE-2, 30 JAN 2020 to 27 FEB 2020

NE-2, 30 JAN 2020 to 27 FEB 2020