

WAAS CH 86202 W31A	APP CRS 313°	Rwy Idg TDZE Apt Elev	5811 214 214
--	------------------------	-----------------------------	---

RNAV (GPS) RWY 31

MCNARY FIELD (SLE)

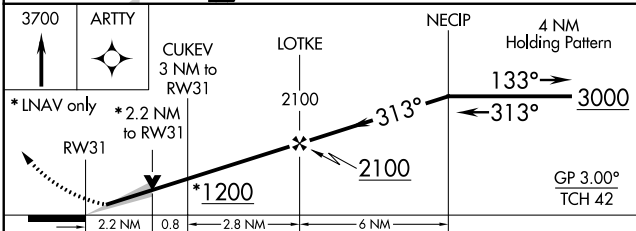
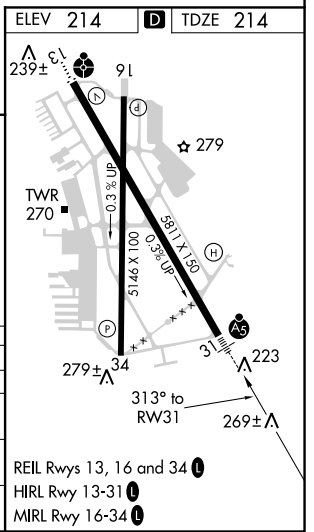
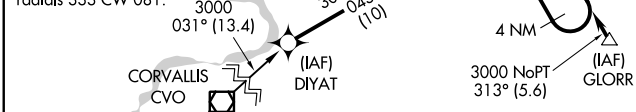
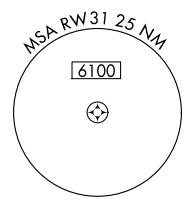
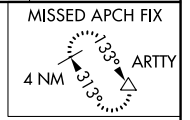
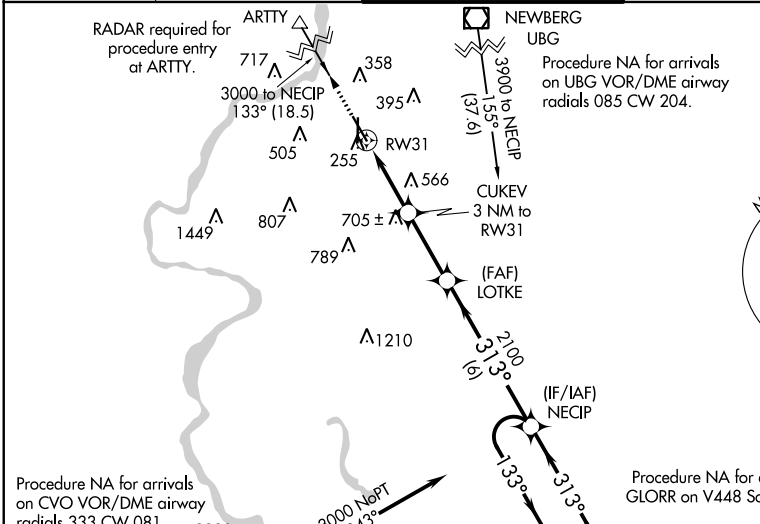
RNP APCH.

For uncompensated Baro-VNAV systems, LNAV/VNAV NA below -15°C or above 54°C. When local altimeter setting not received, use Mc Minnville altimeter setting and increase all DA 49 feet; increase all MDA 60 feet; increase LNAV/VNAV visibility all Cats to 1 1/2 SM, LNAV Cat C and D visibility to 2 SM, and Circling Cat C visibility to 2 3/4 SM. Baro-VNAV and VDP NA when using Mc Minnville altimeter setting. For inop ALS increase LNAV/VNAV all Cats visibility to 1 3/8 SM and increase LNAV Cat C and D visibility to 2 1/2 SM. For inop MALSR when using Mc Minnville altimeter setting, increase LPV all Cats visibility to RVR 4500, increase LNAV Cat C/D visibility to 2 1/2 miles. ** RVR 1800 authorized with use of FD or AP or HUD to DA, NA when using Mc Minnville altimeter setting.

MALSR

MISSED APPROACH:
Climb to 3700 direct ARTTY and hold, continue climb-in-hold to 3700.

ATIS 124.55	SEATTLE CENTER 125.8 291.7	SALEM TOWER * 119.1 (CTAF) 0 257.2	GND CON 121.9	UNICOM 122.95
-----------------------	--------------------------------------	--	-------------------------	-------------------------



CATEGORY	A	B	C	D
LPV DA **		414/24	200 (200-1/2)	
LNAV/VNAV DA		631/50	417 (500-1)	
LNAV MDA	1020/50	806 (900-1)	1020-1 7/8	806 (900-1 7/8)
CIRCLING	960-1 746 (800-1)	960-1 1/4 746 (800-1 1/4)	1060-2 1/2 846 (900-2 1/2)	1260-3 1046 (1100-3)

NW-1, 30 JAN 2020 to 27 FEB 2020

NW-1, 30 JAN 2020 to 27 FEB 2020