


# RNAV (RNP) Z RWY 12R

ST LOUIS LAMBERT INTL (STL)

APP CRS	Rwy Idg	<b>10552</b>
<b>123°</b>	TDZE	<b>540</b>
	Apt Elev	<b>618</b>

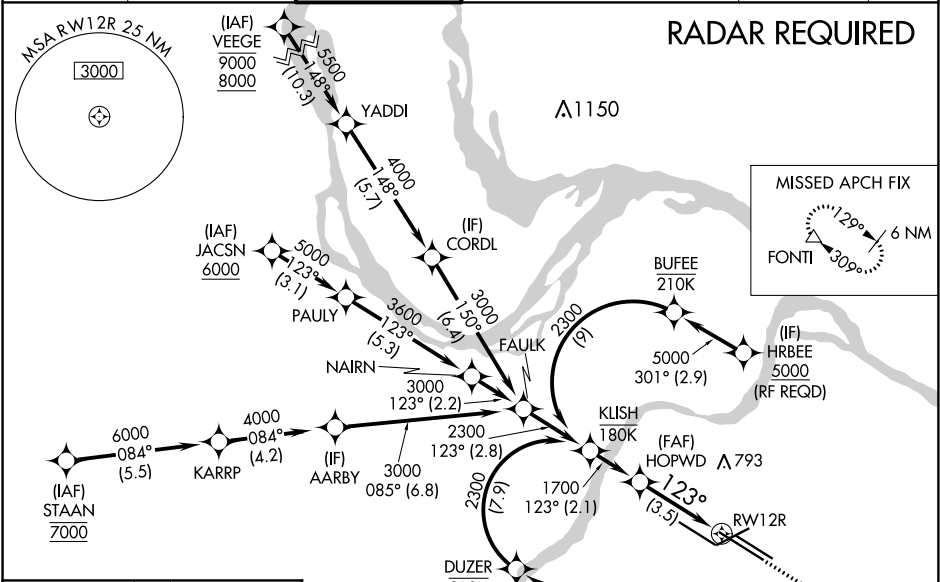
**V** For uncompensated Baro-VNAV systems, procedure NA below -16°C (4°F) or above 54°C (130°F). GPS required. For inop ALS, increase RNP 0.30 all Cats visibility to 1½ SM. Simultaneous approach authorized with Rwy 11 except for arrivals at RRRIP and HRBEE. Use of FD or AP required during simultaneous operations.

**MALSR**



**MISSED APPROACH:** Climb to 5000 on track 123° to FONTI and hold, continue climb-in-hold to 5000.

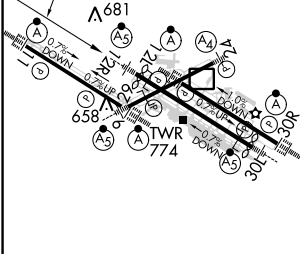
D-ATIS <b>125.025</b> <b>379.925</b>	ST. LOUIS APP CON <b>132.125 360.6</b>	ST. LOUIS TOWER <b>118.5 257.7</b>	GND CON <b>121.9 348.6</b> (Inbound) <b>121.65 377.175</b> (Outbound) <b>118.925 227.125</b> (Rwy 11/29)	CLNC DEL <b>119.5 363.1</b>	CPDLC
--	---	---------------------------------------	---	--------------------------------	-------



ELEV 618	<b>D</b>	TDZE 540
----------	----------	----------

123° to RWY 12R

Rwy 6-24 7607 X 150  
Rwy 11-29 9001 X 150  
Rwy 12L-30R 9003 X 150  
Rwy 12R-30L 11019 X 200



HIRL all Rwys  
REIL Rwy 12L  
TDZ/CL Rwys 11, 12L, 12R, 29, and 30R

HOPWD See planview for multiple IF locations.

1700

123°

5000 FONTI

↑ tr 123°

GP 3.00°  
TCH 54

3.5 NM

CATEGORY	A	B	C	D
RNP 0.30 DA	998/60 458 (400-1¼)			

## AUTHORIZATION REQUIRED

NC-3, 30 JAN 2020 to 27 FEB 2020

NC-3, 30 JAN 2020 to 27 FEB 2020