


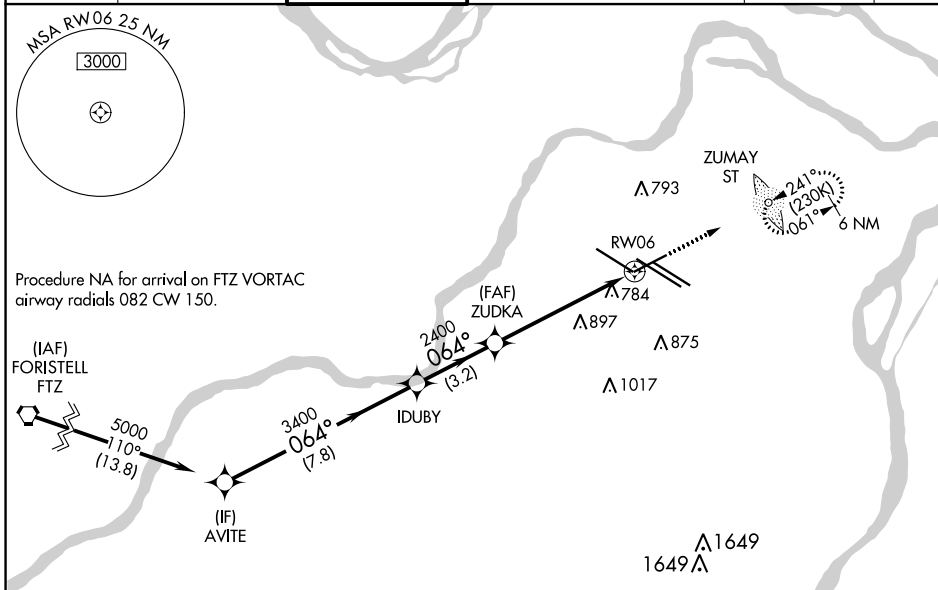
APP CRS	Rwy Idg	7352
064°	TDZE	551
	Apt Elev	618

RNAV (GPS) RWY 6

ST LOUIS LAMBERT INTL (STL)

<p>▼ WAAS VNAV NA. For uncompensated Baro-VNAV systems, LNAV/VNAV NA below -16°C (4°F) or above 54°C (130°F). DME/DME RNP-0.3 NA. For inop ALS increase LNAV/VNAV Cat E visibility to 1½, LNAV Cats A and B visibility to RVR 5000 and LNAV Cats C, D and E visibility to 1¾.</p>	<p>MALSR</p> 	<p>MISSED APPROACH: Climb to 3000 direct ZUMAY LOM and hold, continue climb-in-hold to 3000.</p>
--	--	--

D-ATIS 125.025 379.925	ST. LOUIS APP CON 132.125 360.6	ST. LOUIS TOWER 132.475 239.275	GND CON 121.9 348.6 (Inbound) 121.65 377.175 (Outbound) 118.925 227.125 (Rwy 11/29)	CLNC DEL 119.5 363.1	CPDLC
--	---	---	---	--------------------------------	-------



Procedure NA for arrival on FTZ VORTAC airway radials 082 CW 150.

(IAF) FORISTELL FTZ

(IF) AVITE

IDUBY

(FAF) ZUDKA

Λ 793

Λ 784

Λ 897

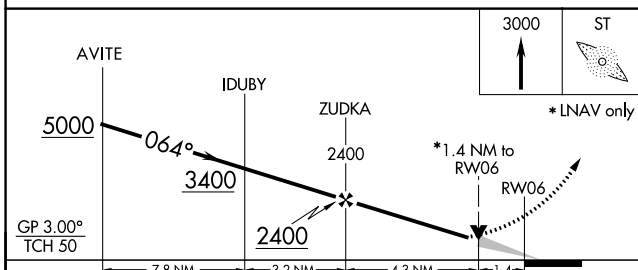
Λ 875

Λ 1017

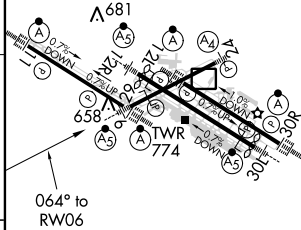
Λ 1649

1649 Λ

ELEV 618	D TDZE 551
----------	-------------------



- Rwy 6-24 7607 X 150
- Rwy 11-29 9001 X 150
- Rwy 12L-30R 9003 X 150
- Rwy 12R-30L 11019 X 200



CATEGORY	A	B	C	D	E
LNAV/VNAV	DA	1100-1¾		549 (500-1¾)	
LNAV MDA	1040/40	489 (500-¾)	1040/50		489 (500-1)

HIRL all Rwys
REIL Rwy 12L
TDZ/CL Rwys 11, 12L, 12R, 29, and 30R

NC-3, 30 JAN 2020 to 27 FEB 2020

NC-3, 30 JAN 2020 to 27 FEB 2020