

LINDBERGH SIX DEPARTURE

AL-360 (FAA)

ST LOUIS LAMBERT INTL (STL)

ST. LOUIS, MISSOURI

D-ATIS
 125.025 379.925
 CLNC DEL
 119.5 363.1
 CPDLC
 GND CON
 121.9 348.6 (Inbound)
 121.65 377.175 (Outbound)
 118.925 227.125 (Rwy 11/29)
 ST. LOUIS TOWER
 120.05 284.6 (Rwys 12L/30R, 24)
 118.5 257.7 (Rwy 12R/30L)
 132.475 239.275 (Rwys 6, 11/29)
 ST. LOUIS DEP CON
 128.1 307.05

ST LOUIS
 117.4 STL :...
 Chan 121
 N38°51.64'-W90°28.94'

TOP ALTITUDE:
(JETS) 5000
(PROPS) 3000

VICHY
 117.7 VIH :...
 Chan 124
 N38°09.24'-W91°42.41'
 L-16, H-5

MAPLES
 113.4 MAP :...
 Chan 81
 N37°35.45'-W91°47.31'
 L-16

TAKEOFF MINIMUMS

- Rwys 6, 12L/R, 24, 29: Standard.
- Rwy 11: 200-1 or standard with minimum climb of 370' per NM to 900.
- Rwy 30L: 200-1 or standard with minimum climb of 245' per NM to 800.
- Rwy 30R: 200-1½ or standard with minimum climb of 230' per NM to 800.

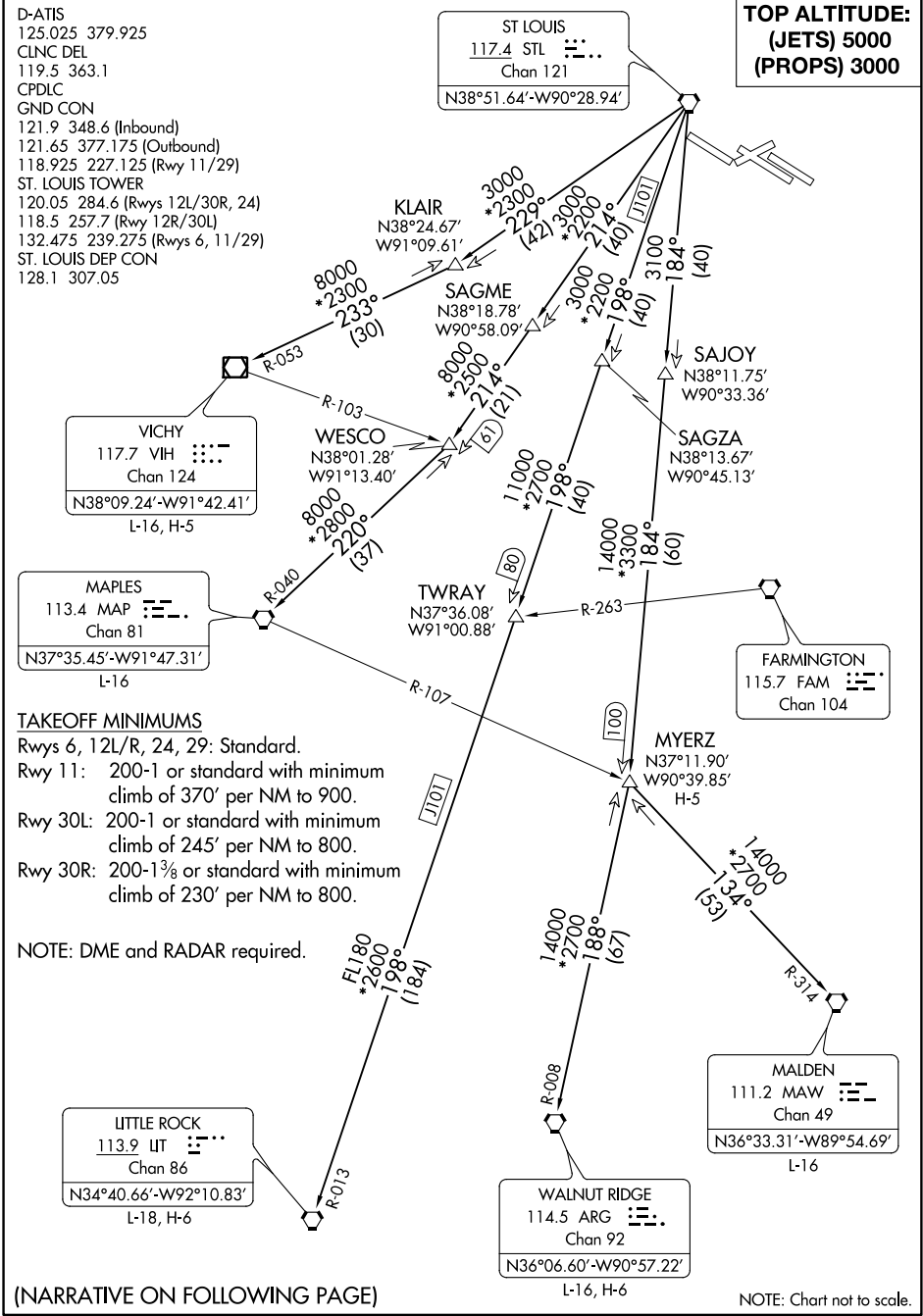
NOTE: DME and RADAR required.

LITTLE ROCK
 113.9 LIT :...
 Chan 86
 N34°40.66'-W92°10.83'
 L-18, H-6

WALNUT RIDGE
 114.5 ARG :...
 Chan 92
 N36°06.60'-W90°57.22'
 L-16, H-6

MALDEN
 111.2 MAW :...
 Chan 49
 N36°33.31'-W89°54.69'
 L-16

FARMINGTON
 115.7 FAM :...
 Chan 104



NC-3, 30 JAN 2020 to 27 FEB 2020

NC-3, 30 JAN 2020 to 27 FEB 2020

(NARRATIVE ON FOLLOWING PAGE)

NOTE: Chart not to scale.

LINDBERGH SIX DEPARTURE