

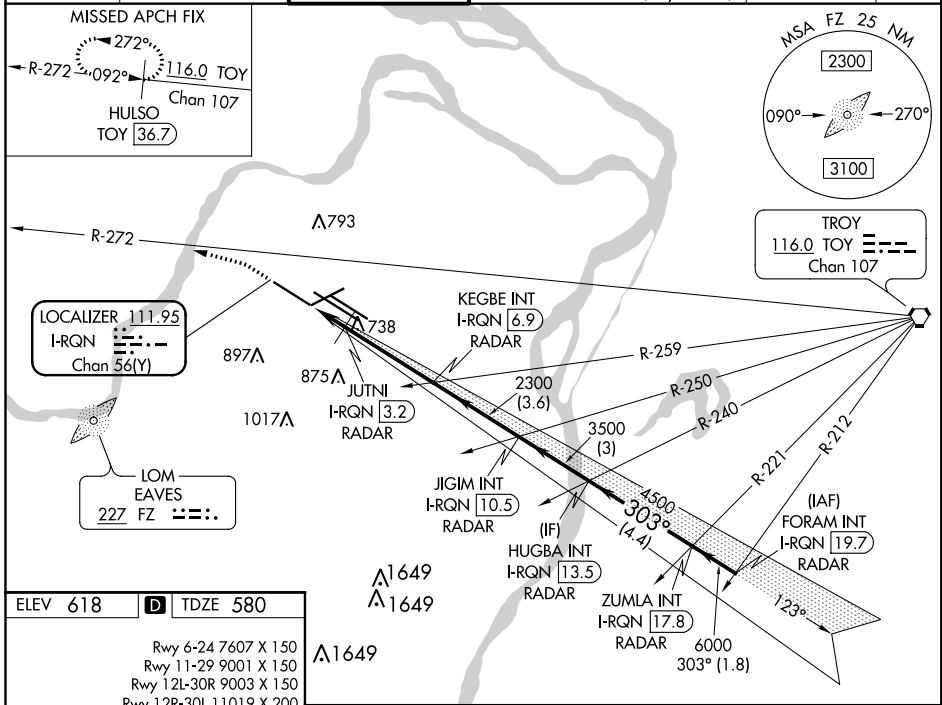
LOC/DME I-RQN 111.95 Chan 56(Y)	APP CRS 303°	Rwy Idg TDZE Apt Elev	9001 580 618
---	------------------------	-----------------------------	---

ILS or LOC RWY 29

ST LOUIS LAMBERT INTL (STL)

RADAR required for procedure entry. DME or RADAR required.		ALSF-2 	MISSED APPROACH: Climb to 1040 then climbing left turn to 3000 on heading 286° and on TOY VORTAC R-272 to HULSO/TOY 36.7 DME and hold.
<p>Simultaneous approach authorized with Rwy 30R/L. Autopilot coupled approach NA. Rwy 29 helicopter visibility reduction below RVR 4000 NA. For inop ALS, increase S-ILS Cat E visibility to RVR 4000, increase S-LOC Cats A/B visibility to RVR 5500, and Cat C/D/E to RVR 6000.</p>			

D-ATIS 125.025 379.925	ST. LOUIS APP CON 132.125 360.6	ST. LOUIS TOWER 132.475 239.275	GND CON 121.9 348.6 (Inbound) 121.65 377.175 (Outbound) 118.925 227.125 (Rwy 11/29)	CLNC DEL 119.5 363.1	CPDLC
--	---	---	---	--------------------------------	-------



ELEV 618	D TDZE 580
Rwy 6-24 7607 X 150 Rwy 11-29 9001 X 150 Rwy 12L-30R 9003 X 150 Rwy 12R-30L 11019 X 200	
HIRL all Rwys REIL Rwy 12L TDZ/CL Rwys 11, 12L, 12R, 29, and 30R FAF to MAP 5.2 NM	
Knots	60 90 120 150 180
Min:Sec	5:12 3:28 2:36 2:05 1:44

1040	3000	TOY R-272	HULSO TOY 36.7	VGSi and ILS glidepath not coincident (VGSi Angle 3.00/ TCH 73).	
Disregard OM indications. * LOC only					
HUGBA INT I-RQN 13.5 RADAR		ZUMLA INT I-RQN 17.8 RADAR		FORAM INT I-RQN 19.7 RADAR	
JUTNI I-RQN 3.2 RADAR		KEGBE INT I-RQN 6.9 RADAR		JIGIM INT I-RQN 10.5 RADAR	
I-RQN 1.7		2300		3500 4500 6000	
1100*		2300		GS 3.00° TCH 56	
1.5 NM		3.7 NM		3.6 NM	
CATEGORY	A	B	C	D	E
S-ILS 29	780/18		200 (200-½)		
S-LOC 29	980/40		400 (400-¾)		

NC-3, 30 JAN 2020 to 27 FEB 2020

NC-3, 30 JAN 2020 to 27 FEB 2020