

VORTAC HLN 117.7 Chan 124	APP CRS 266°	Rwy Idg TDZE Apt Elev N/A 3877
--	------------------------	---

VOR/DME-B HELENA RGNL (HLN)

V Circling NA for Cat D south of Rwy 9-27.
A DME Arc to final approach course required for turbojet aircraft.
⊖ -21°C Holding at SEWAL authorized for Cat A and B aircraft only.

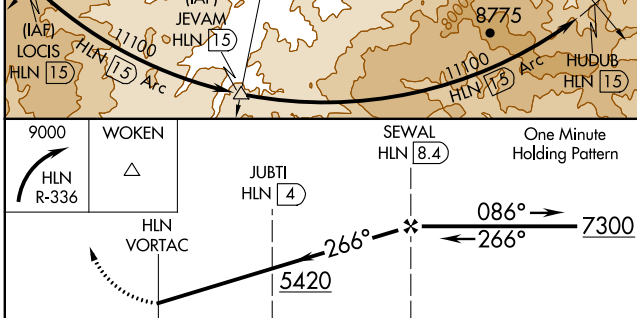
MISSED APPROACH: Climbing right turn to 9000 on HLN VORTAC R-336 to WOKEN INT/GTF 37.7 DME and hold.

ATIS 120.4	HELENA APP CON * 119.5 229.4	HELENA TOWER * 118.3 (CTAF) 0 257.8	GND CON 121.9	UNICOM 122.95
----------------------	--	---	-------------------------	-------------------------



NW-1, 30 JAN 2020 to 27 FEB 2020

NW-1, 30 JAN 2020 to 27 FEB 2020



ELEV 3877 **D**

REIL Rws 9, 17 and 35
MIRL Rws 5-23 and 17-35
HIRL Rwy 9-27

Runway 9-27: 3951 TW Rwy 10-28 3984 1584 X 75

Wind limits: 2% UP, 1.7% UP, 0.3% DOWN, 1.7% UP

CATEGORY	A	B	C	D
CIRCLING	4760-1 ¹ / ₄ 883 (900-1 ¹ / ₄)		4760-2 ³ / ₄ 883 (900-2 ³ / ₄)	4760-3 883 (900-3)