

VORTAC HLN <b>117.7</b> Chan <b>124</b>	APP CRS <b>266°</b>	Rwy Idg TDZE Apt Elev <b>N/A</b> <b>N/A</b> <b>3877</b>
---	------------------------	--

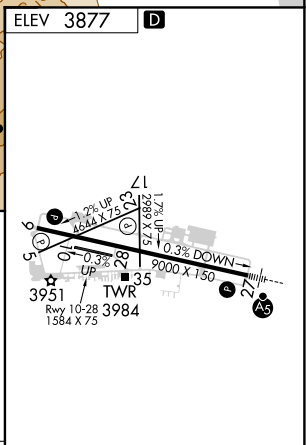
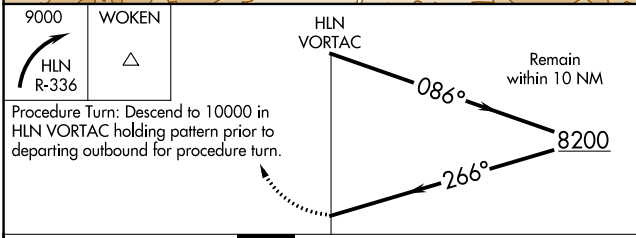
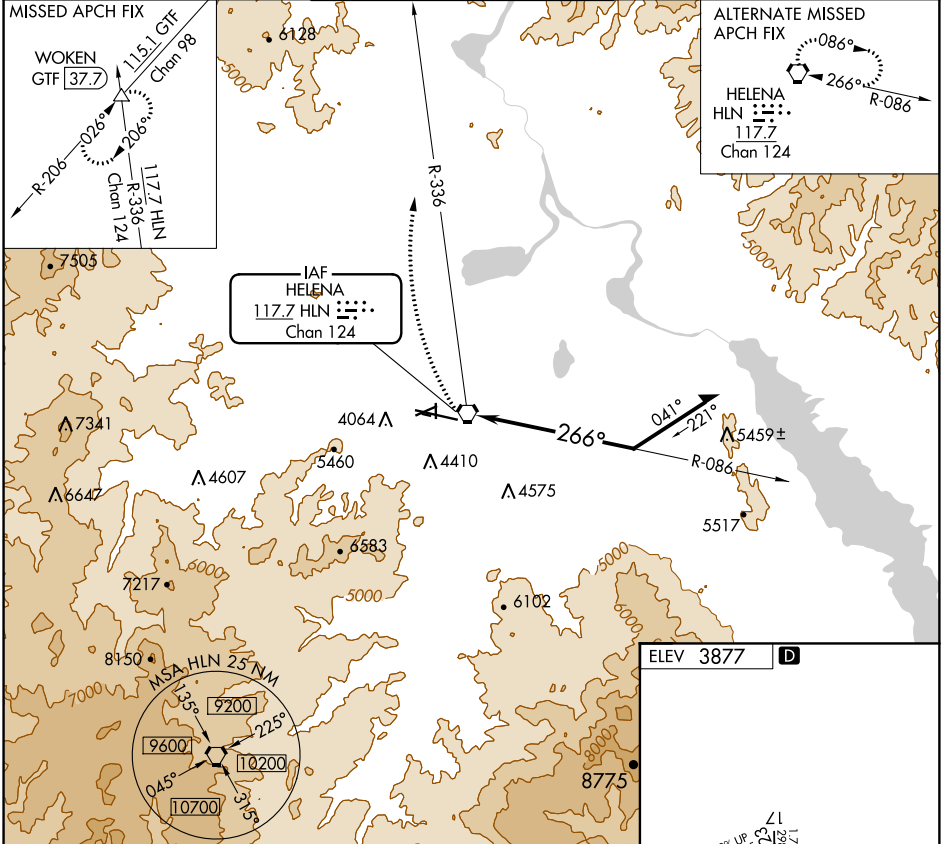
# VOR-A

HELENA RGNL (HLN)

**⚠** Circling NA for Cat D south of Rwy 9-27.  
**⚠** Night Landing: Rwy 5, 23, 35 NA.  
**⚠** -21°C Helicopter visibility reduction below 1 SM NA.

MISSED APPROACH: Climbing right turn to 9000 via HLN VORTAC R-336 to WOKEN INT and hold.

ATIS <b>120.4</b>	HELENA APP CON* <b>119.5 229.4</b>	HELENA TOWER* <b>118.3 (CTAF) 257.8</b>	GND CON <b>121.9</b>	UNICOM <b>122.95</b>
----------------------	---------------------------------------	--	-------------------------	-------------------------



CATEGORY	A	B	C	D
CIRCLING	6700-1¼ 2823 (2900-1¼)	6700-1½ 2823 (2900-1½)	6700-3	2823 (2900-3)

REIL Rws 9, 13 and 35  
 MIRL Rws 5-23 and 17-35  
 HIRL Rwy 9-27

NW-1, 30 JAN 2020 to 27 FEB 2020

NW-1, 30 JAN 2020 to 27 FEB 2020