

LOC I- <b>HLN</b>	APP CRS <b>087°</b>	Rwy ldg TDZE <b>N/A</b>	Apt Elev <b>3877</b>
-------------------	---------------------	-------------------------	----------------------

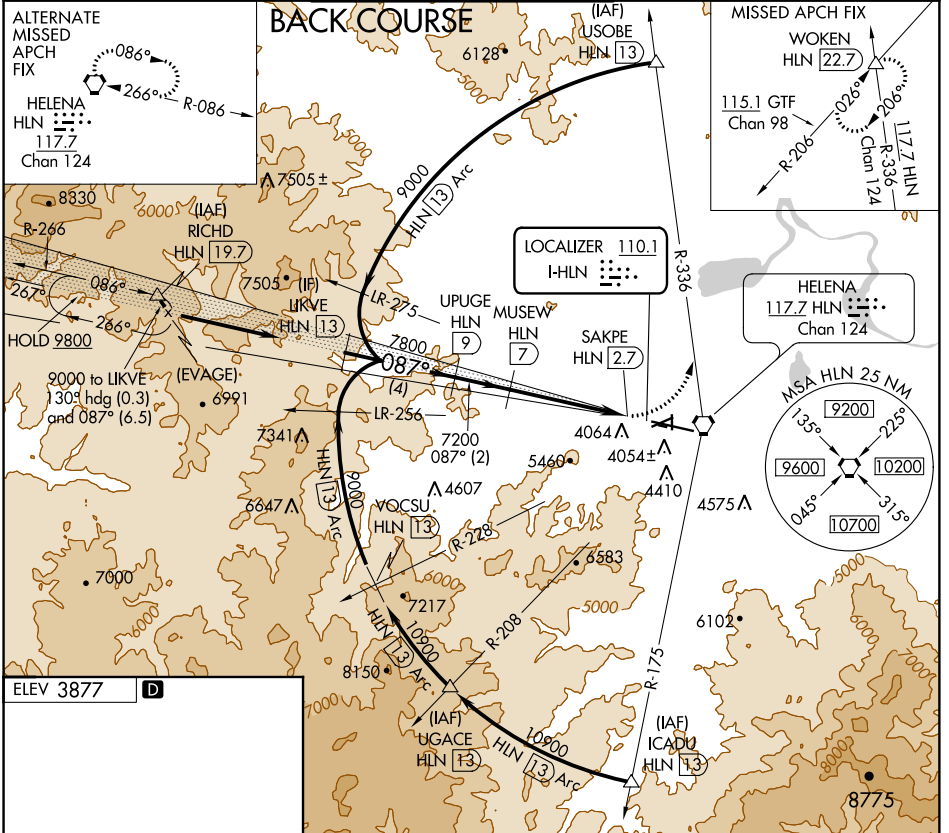
# LOC/DME BC-C

HELENA RGNL (HLN)

**⚠** Circling to Rwy 5, 35 NA at night. When local altimeter setting not received, procedure NA. Visibility reduction by helicopters NA. DME from HLN VORTAC simultaneous reception of I-**HLN** and HLN DME required. When VGSI inop, Circling to Rwy 9, 23 NA at night.

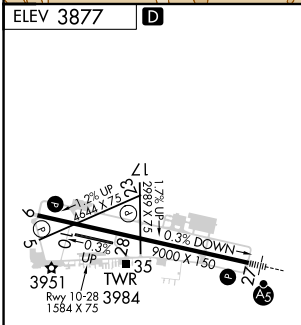
**MISSED APPROACH:** Climbing left turn to 9300 on HLN VORTAC R-336 to WOKEN INT and hold.

ATIS <b>120.4</b>	HELENA APP CON* <b>119.5 229.4</b>	HELENA TOWER* <b>118.3 (CTAF) 257.8</b>	GND CON <b>121.9</b>	UNICOM <b>122.95</b>
-------------------	------------------------------------	---	----------------------	----------------------

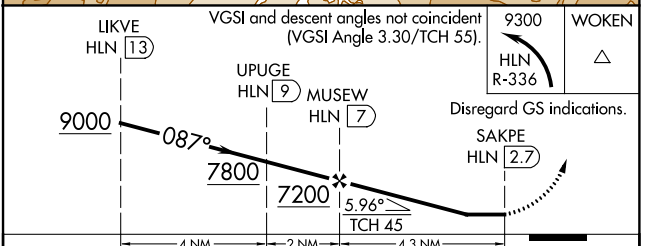


NW-1, 30 JAN 2020 to 27 FEB 2020

NW-1, 30 JAN 2020 to 27 FEB 2020



- REIL Rws 9, 17 and 35
- MIRL Rws 5-23 and 17-35
- HIRL Rwy 9-27



CATEGORY	A	B	C	D
CIRCLING	5140-1¼ 1263 (1300-1¼)	5140-1½ 1263 (1300-1½)	5140-3 1263 (1300-3)	NA