

LOC I- <b>HLN</b>	APP CRS	Rwy Idg	<b>9000</b>
<b>110.1</b>	<b>267°</b>	TDZE	<b>3852</b>
		Apt Elev	<b>3877</b>

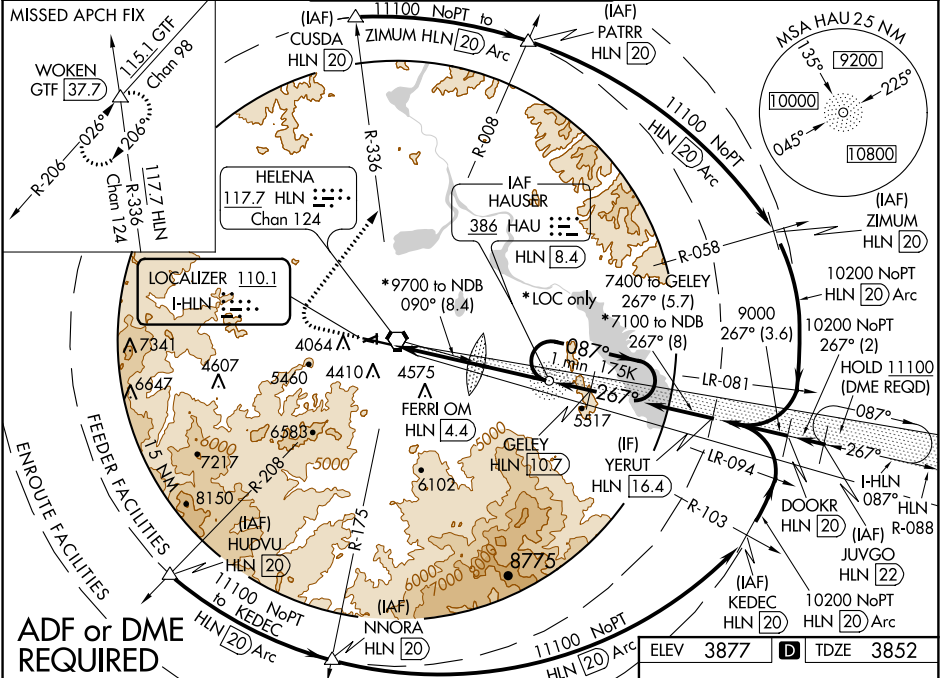
# ILS or LOC Z RWY 27


HELENA RGNL (HLN)

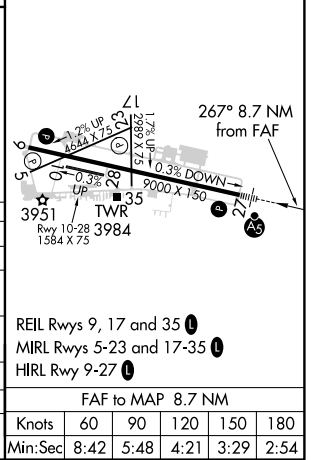
**⚠** Inoperative table does not apply to S-LOC 27 Cat C/D/E. For inoperative MALS/R, increase S-ILS 27 Cat E visibility to 3/4 mile, increase FERRI fix minimums: S-LOC 27 Cat C/D/E visibility to 1 1/8 miles. Missed approach requires a minimum climb of 300 ft per NM to 6000, if unable to meet climb gradient, see ILS or LOC Y RWY 27. Circling NA south of Rwy 9-27 for Cats D and E. Night Landing: Rwy 5, 23, 35 NA. DME from HLN VORTAC, simultaneous reception of I-**HLN** and HLN DME required. Holding at HAU NDB authorized for Cat A and B aircraft only.

**MALS**  **MISSED APPROACH:** Climb to 4600 then climbing right turn to 9000 on heading 021° and HLN VORTAC R-336 to WOKEN/GTF 37.7 DME and hold.

ATIS	HELENA APP CON ★	HELENA TOWER ★	GND CON	UNICOM
<b>120.4</b>	<b>119.5 229.4</b>	<b>118.3 (CTAF) 0 257.8</b>	<b>121.9</b>	<b>122.95</b>



4600	9000	WOKEN			
	hdg 021°	HLN R-336			
*LOC only	FERRI OM HLN 4.4	HAU NDB HLN 8.4	GELEY HLN 10.7	YERUT HLN 16.4	9000
	5428	*7100	7400	9000	GS 3.00° TCH 55
	4.7 NM	4 NM	2.3 NM	5.7 NM	
CATEGORY	A	B	C	D	E
S-ILS 27	4052-1/2		200 (200-1/2)		
S-LOC 27	5620-3/4 1768 (1800-3/4)	5620-1 1768 (1800-1)	5620-3	1768 (1800-3)	
CIRCLING	5620-1 1/4 1743 (1800-1 1/4)	5620-1 1/2 1743 (1800-1 1/2)	5920-3	2043 (2100-3)	
FERRI FIX MINIMUMS*					
S-LOC 27	4520-1/2	668 (700-1/2)	4520-1 1/2	668 (700-1 1/2)	
CIRCLING	4640-1 763 (800-1)	4800-1 1/4 923 (1000-1 1/4)	5920-3	2043 (2100-3)	



NW-1, 30 JAN 2020 to 27 FEB 2020

NW-1, 30 JAN 2020 to 27 FEB 2020

REIL Rwys 9, 17 and 35 **⓪**  
MIRL Rwys 5-23 and 17-35 **⓪**  
HIRL Rwy 9-27 **⓪**

FAF to MAP 8.7 NM

Knots	60	90	120	150	180
Min:Sec	8:42	5:48	4:21	3:29	2:54