


LOC I-HLN	APP CRS	Rwy Idg	9000
110.1	267°	TDZE	3852
		Apt Elev	3877

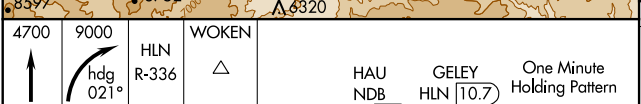
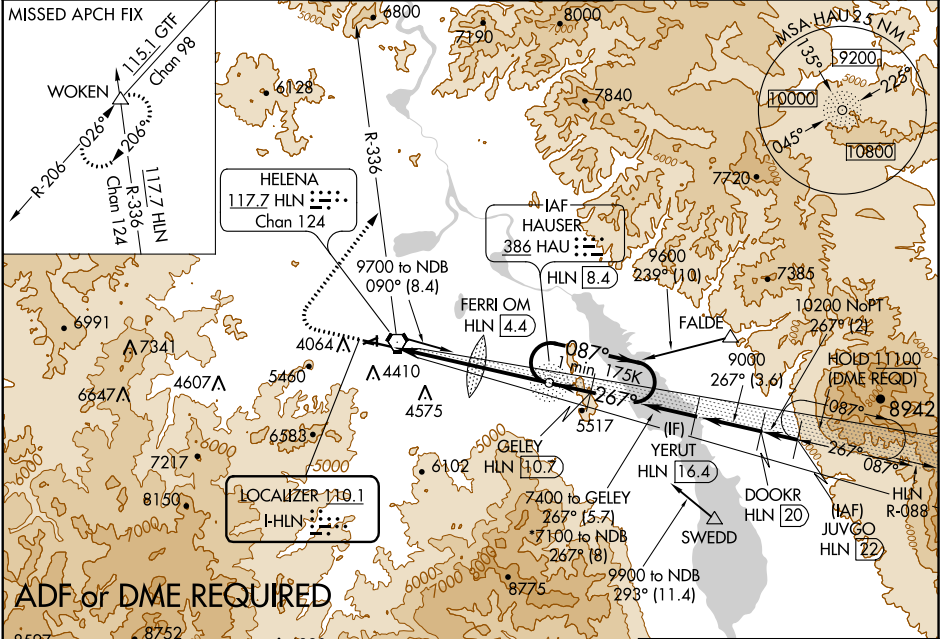
ILS or LOC Y RWY 27

HELENA RGNL (HLN)

Inoperative table does not apply to S-LOC 27 all Cats. For inoperative MALSR, increase S-ILS 27 all Cats visibility to 1 1/8 miles, FERRI FIX minimums: S-LOC 27 Cat C, D and E visibility to 2 miles. Holding at HAU NDB authorized for Category A and B aircraft only. Circling NA south of Rwy 9-27 for Cats D and E. Circling to Rwy 5, 23, 35 NA at night. DME from HLN VORTAC, simultaneous reception of I-HLN and HLN DME required.

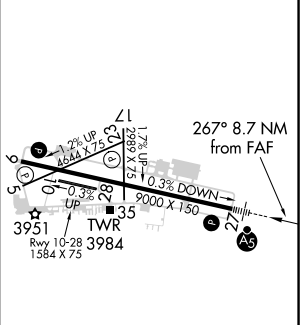
MALSR

MISSED APPROACH: Climb to 4700 then climbing right turn to 9000 via heading 021° and HLN VORTAC R-336 to WOKEN INT and hold, continue climb-in-hold to 9000.

ATIS	HELENA APP CON *	HELENA TOWER *	GND CON	UNICOM
120.4	119.5 229.4	118.3 (CTAF) 257.8	121.9	122.95



ELEV	3877	D	TDZE	3852
------	-------------	----------	------	-------------

4700	9000	WOKEN	
↑	hdg 021°	HLN R-336	△
*LOC only		FERRI OM HLN (4.4)	
		HAU NDB HLN (8.4)	One Minute Holding Pattern
		GELEY HLN (10.7)	
		7400	087° → 7400
		5427	← 267° 7400
		5620*	← 267° 7400
		7100*	← 267° 7400
			GS 3.00° TCH 55



CATEGORY	A	B	C	D	E
S-ILS 27		4409-1 3/8	557 (600-1 1/8)		
S-LOC 27	5620-1 1/4 1768 (1800-1 1/4)	5620-1 1/2 1768 (1800-1 1/2)	5620-3	1768 (1800-3)	
CIRCLING	5620-1 1/4 1743 (1800-1 1/4)	5620-1 1/2 1743 (1800-1 1/2)	5620-3	1743 (1800-3)	
FERRI FIX MINIMUMS*					
S-LOC 27	4580-1/2	728 (800-1/2)	4580-1 5/8	728 (800-1 5/8)	
CIRCLING	4640-1	763 (800-1)	4740-2 1/2 863 (900-2 1/2)	4740-2 3/4 863 (900-2 3/4)	4940-3 1063 (1100-3)

REIL Rws 9, 17 and 35	
MIRL Rws 5-23 and 17-35	
HIRL Rwy 9-27	
FAF to MAP 8.7 NM	
Knots	60 90 120 150 180
Min:Sec	8:42 5:48 4:21 3:29 2:54

NW-1, 30 JAN 2020 to 27 FEB 2020

NW-1, 30 JAN 2020 to 27 FEB 2020