

APP CRS 352°	Rwy Idg 11022
	TDZE 6075
	Apt Elev 6187

RNAV (RNP) Z RWY 35L

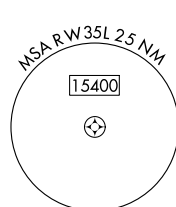
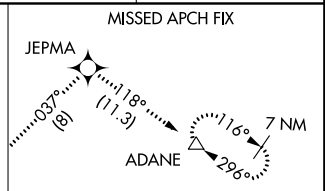
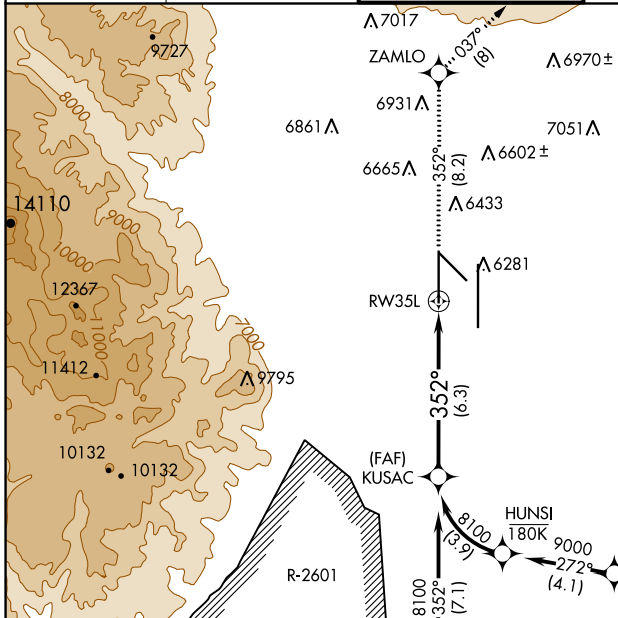
CITY OF COLORADO SPRINGS MUNI (COS)

▼ For uncompensated Baro-VNAV systems, procedure NA below -21°C (-5°F) or above 45°C (113°F). GPS required. For inop MALSRS increase RNP 0.15 visibility all Cats to RVR 5000. RADAR monitoring required when R-2601 in use.



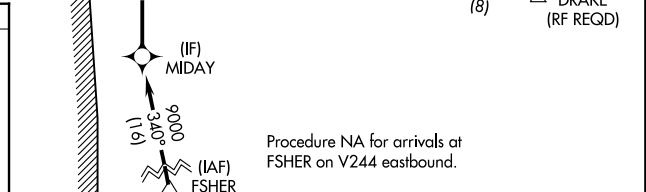
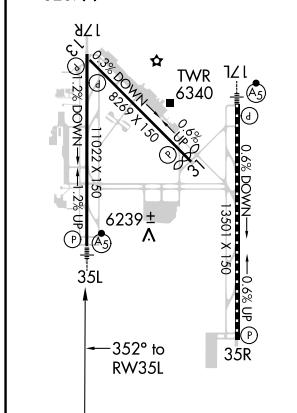
MISSED APPROACH: Climb to 9000 on track 352° to ZAMLO and on track 037° to JEPMA and on track 118° to ADANE and hold.

ATIS 125.0 254.3	SPRINGS APP CON 124.0 257.875	SPRINGS TOWER 119.9 360.6	GND CON 121.7 348.6	CLNC DEL 134.45 363.125
----------------------------	-----------------------------------------	-------------------------------------	-------------------------------	-----------------------------------

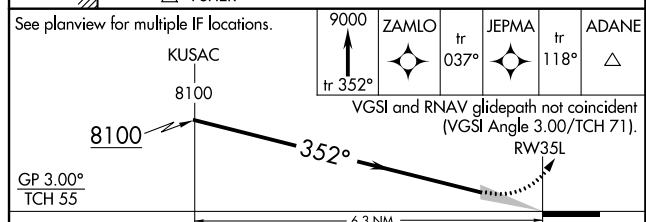


Procedure NA for arrivals at DRAKE on V83 southeast bound and V389 southbound.

ELEV 6187	TDZE 6075
MIRL Rwy 13-31	
HIRL Rwys 17R-35L and 17L-35R	
REIL Rwys 13, 17R, 31, and 35R	
TDZ/CL Rwys 17L and 35R	
6207A	



Procedure NA for arrivals at FSHER on V244 eastbound.



GP 3.00°	TCH 55	6.3 NM		
CATEGORY	A	B	C	D
RNP 0.15 DA		6372/30	297 (200-¾)	
RNP 0.30 DA		6427/40	352 (300-¾)	

AUTHORIZATION REQUIRED

SW-1, 30 JAN 2020 to 27 FEB 2020

SW-1, 30 JAN 2020 to 27 FEB 2020