

VORTAC CEC 109.0 Chan 27	APP CRS 346°	Rwy Idg 5000 TDZE 59 Apt Elev 61
---------------------------------------	------------------------	---

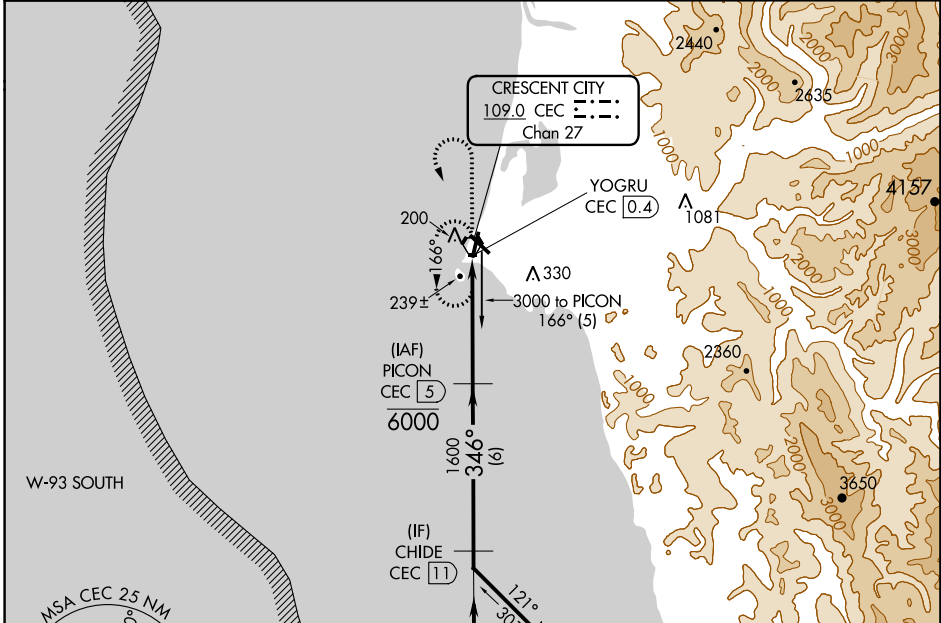
VOR/DME RWY 36

JACK MC NAMARA FIELD (CEC)

⚠ When local altimeter setting not received, use Brookings altimeter setting and increase all MDA 100 feet; increase S-36 Cat C/D and Circling Cat D visibilities ½ mile and Circling Cat C visibility ½ mile. Helicopter visibility reduction below 1 SM NA. Night landing: Rwy 36 operational VGSi required, remain on or above VGSi glidepath until threshold. Night landing: Rwy 18, 30 NA.

MISSED APPROACH: Climb to 1000 then climbing left turn to 3000 direct CEC VORTAC and hold, continue climb-in-hold to 3000.

ASOS 119.925	SEATTLE CENTER 124.85 306.3	OAKLAND RADIO 122.3	UNICOM 122.8 (CTAF)
------------------------	---------------------------------------	-------------------------------	-------------------------------

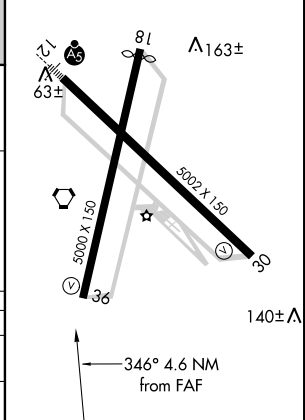
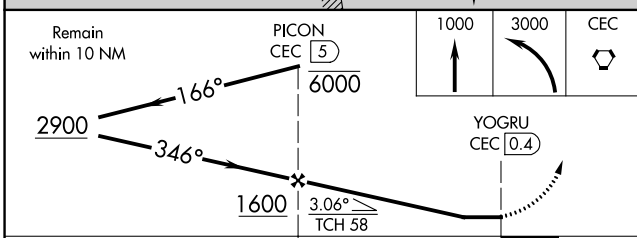


SW-2, 30 JAN 2020 to 27 FEB 2020

SW-2, 30 JAN 2020 to 27 FEB 2020



ELEV 61	TDZE 59
HIRL Rwy 12-30 Δ 144±	REIL Rws 18, 30 and 36 Δ
MIRL Rwy 18-36 Δ	



CATEGORY	A	B	C	D
S-36	500-1	441 (500-1)	500-1 $\frac{3}{8}$	441 (500-1 $\frac{3}{8}$)
C CIRCLING	540-1	479 (500-1)	640-1 $\frac{1}{2}$ 579 (600-1 $\frac{1}{2}$)	640-2 579 (600-2)