

WAAS CH 72726 W03A	APP CRS 034°	Rwy ldg TDZE Apt Elev	5002 1308 1348
--	------------------------	-----------------------------	---

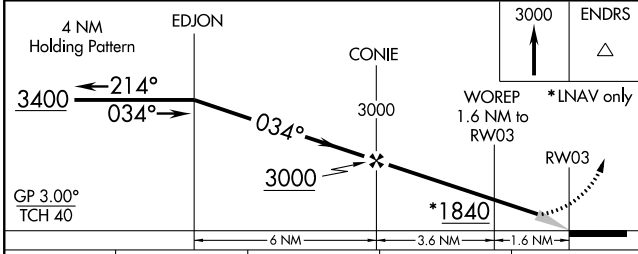
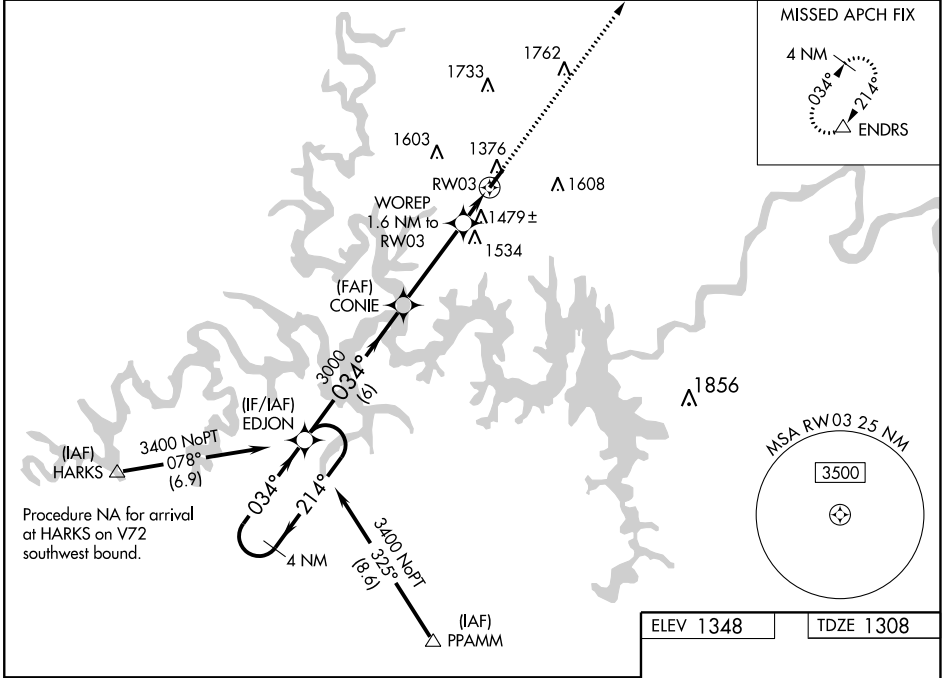
RNAV (GPS) RWY 3

BRANSON WEST MUNI - EMERSON FIELD (FWB)

NA DME/DME RNP-0.3 NA. When local altimeter setting not received, use Branson altimeter setting; increase all DA 39 feet and all MDA 40 feet; increase LNAV/VNAV Cat A/B visibility to 1½ mile. For uncompensated Baro-VNAV systems, LNAV/VNAV NA below -17°C (2°F) or above 54°C (130°F). Baro-VNAV NA when using Branson altimeter setting.

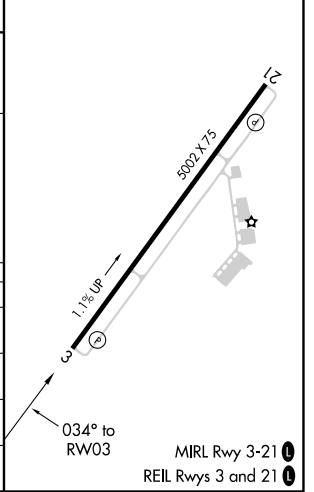
MISSED APPROACH: Climb to 3000 direct ENDRS and hold.

AWOS-3 119.725	SPRINGFIELD APP CON 126.35	UNICOM 123.0 (CTAF)
--------------------------	--------------------------------------	-------------------------------



ELEV 1348	TDZE 1308
-----------	-----------

CATEGORY	A	B	C	D
LPV DA	1508-1	200 (200-1)		NA
LNAV/VNAV DA	1813-1¾	505 (500-1¾)		NA
LNAV MDA	1740-1	432 (400-1)		NA
CIRCLING	1900-1	552 (600-1)		NA



NC-3, 02 JAN 2020 to 30 JAN 2020

NC-3, 02 JAN 2020 to 30 JAN 2020