

WAAS CH <b>86736</b> <b>W14A</b>	APP CRS <b>142°</b>	Rwy ldg TDZE Apt Elev	<b>9501</b> <b>130</b> <b>130</b>
--	------------------------	-----------------------------	---

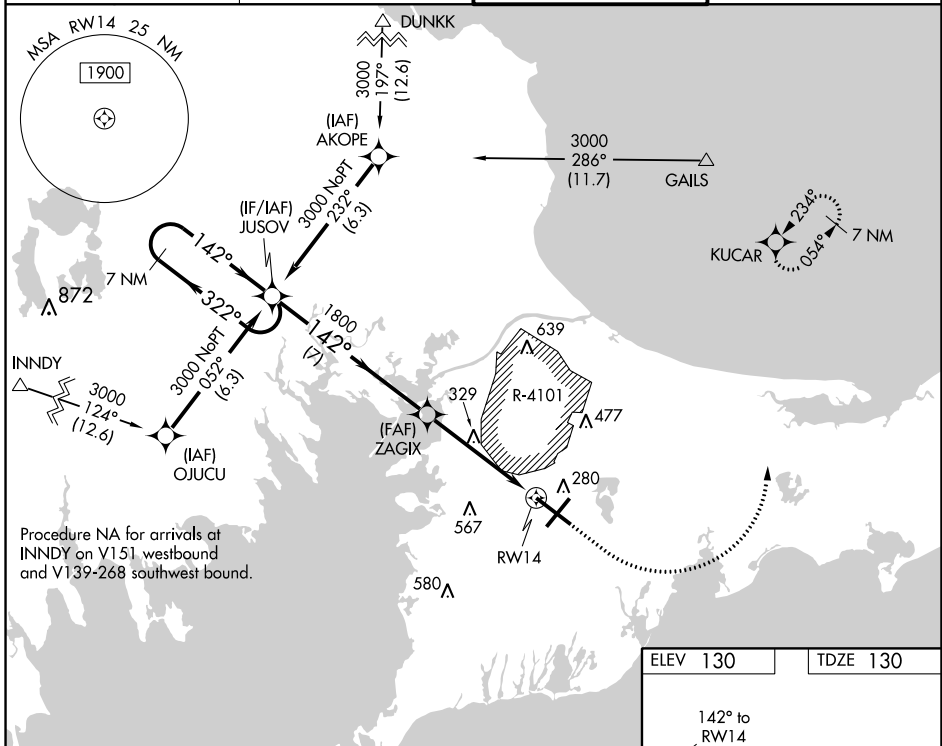
# RNAV (GPS) RWY 14

CAPE COD COAST GUARD AIR STATION (F'MH)

**⚠** For uncompensated Baro-VNAV systems, LNAV/VNAV NA below -15°C (5°F) or above 54°C (130°F). DME/DME RNP-0.3 NA. Circling NA NE of Rwy 14 and NW of Rwy 23. Helicopter visibility reduction below 3/4 SM NA.

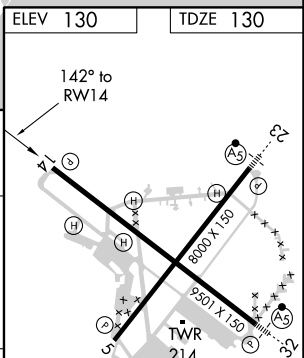
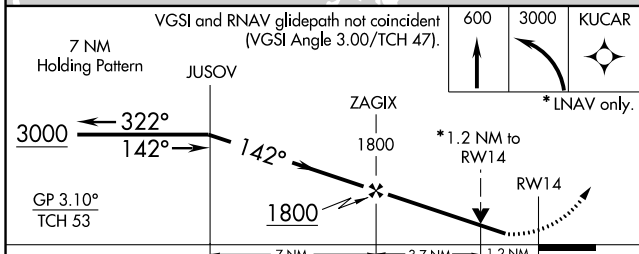
**MISSED APPROACH:** Climb to 600 then climbing left turn to 3000 direct KUCAR and hold.

ATIS <b>120.475 236.825</b>	BOSTON APP CON * <b>118.2 284.6</b>	COAST GUARD TOWER <b>128.425 291.1</b>	GND CON <b>124.15 275.8</b>
--------------------------------	--	---	--------------------------------



NE-1, 02 JAN 2020 to 30 JAN 2020

NE-1, 02 JAN 2020 to 30 JAN 2020



CATEGORY	A	B	C	D
LPV DA		330-3/4	200 (200-3/4)	
LNAV/VNAV DA		563-13/8	433 (500-13/8)	
LNAV MDA	580-1	450 (500-1)	580-13/8	450 (500-13/8)
<b>C</b> CIRCLING	580-1 450 (500-1)	640-1 510 (600-1)	900-2 1/4 770 (800-2 1/4)	900-2 1/2 770 (800-2 1/2)

REIL Rwys 5 and 14  
HIRL Rwys 5-23 and 14-32