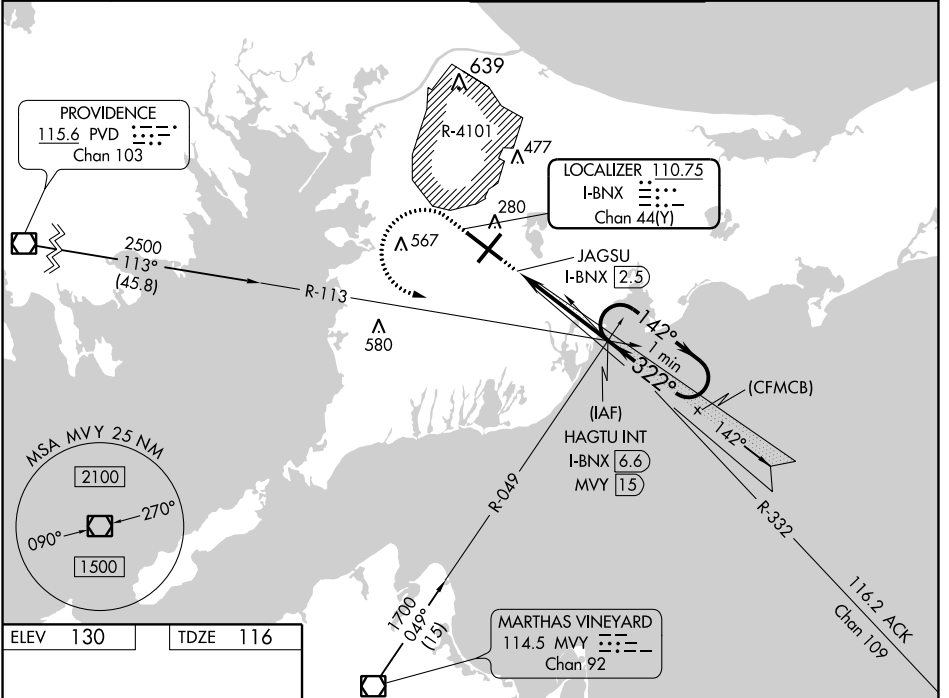


LOC/DME I-BNX <b>110.75</b> Chan 44(Y)	APP CRS <b>322°</b>	Rwy Idg <b>9501</b>
	TDZE <b>116</b>	
	Apt Elev <b>130</b>	

# ILS or LOC RWY 32

CAPE COD COAST GUARD AIR STATION (F'MH)

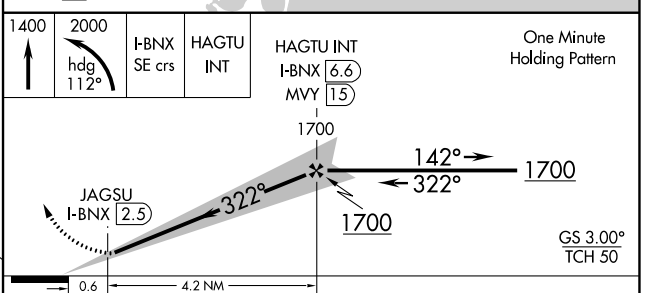
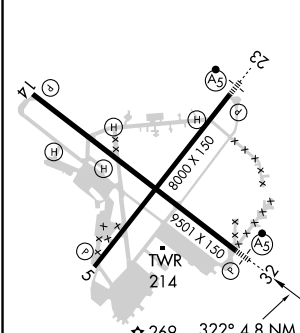
Circling NA northeast of Rwy 14 and northwest of Rwy 23. *RVR 1800 authorized with use of FD or AP or HUD to DA.		MALSR 	MISSED APPROACH: Climb to 1400 then climbing left turn to 2000 on heading 112° and I-BNX localizer SE course to HAGTU INT/I-BNX 6.6 DME and hold.
ATIS <b>120.475 236.825</b>	BOSTON APP CON * <b>118.2 284.6</b>	COAST GUARD TOWER <b>128.425 291.1</b>	GND CON <b>124.15 275.8</b>



NE-1, 02 JAN 2020 to 30 JAN 2020

NE-1, 02 JAN 2020 to 30 JAN 2020

ELEV 130	TDZE 116
----------	----------



CATEGORY	A	B	C	D
S-ILS 32	* 316/24 200 (200-½)			
S-LOC 32	520/24	404 (400-½)	520/40	404 (400-¾)
CIRCLING	580-1 450 (500-1)	640-1 510 (600-1)	640-1½ 510 (600-1½)	680-2 550 (600-2)

REIL Rws 5 and 14  
HIRL Rws 5-23 and 14-32

FAF to MAP 4.2 NM

Knots	60	90	120	150	180
Min:Sec	4:12	2:48	2:06	1:41	1:24