

WAAS CH 40136 W15A	APP CRS 182°	Rwy Idg 2775 TDZE 147 Apt Elev 147
--	------------------------	---

RNAV (GPS) RWY 15

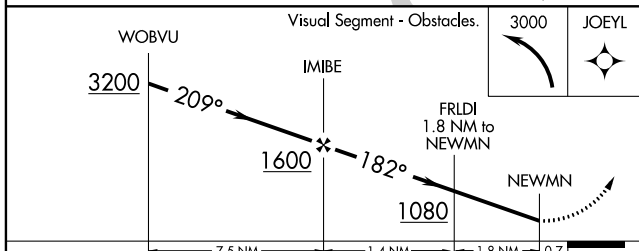
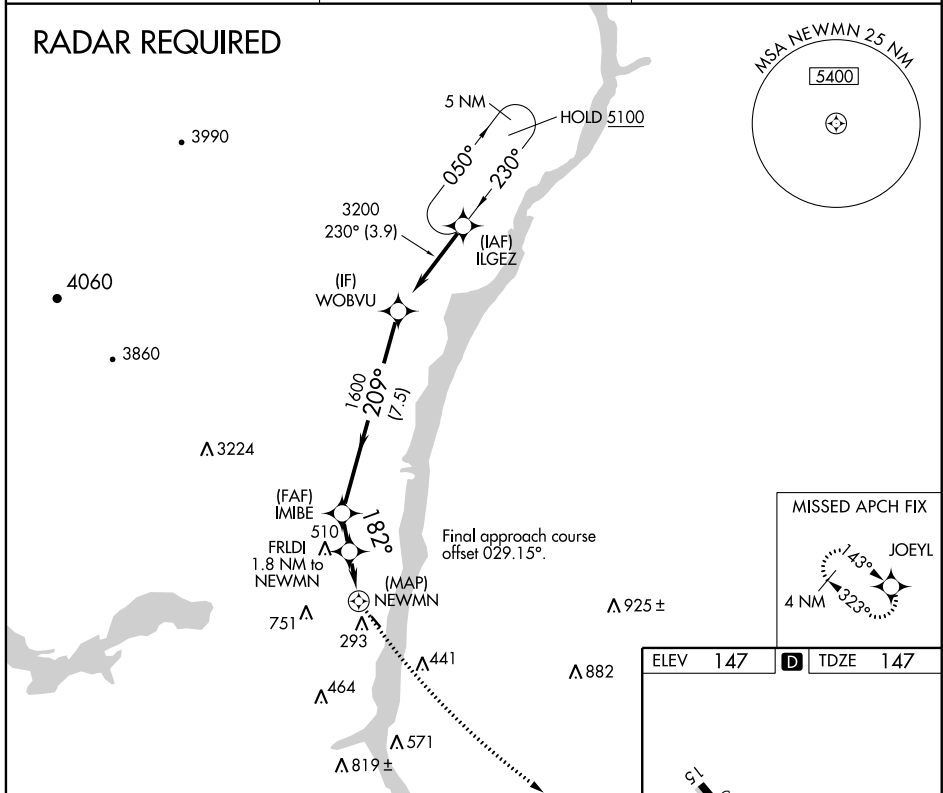
KINGSTON-ULSTER (20N)

▼ DME/DME RNP-0.3 NA. Helicopter visibility reduction below 1 SM NA.
▲ NA Use Hudson altimeter setting. When not received, use Newburgh altimeter setting and increase all MDA 60 feet. Night landing: Rwy 15 NA.

MISSED APPROACH: Climbing left turn to 3000 direct JOEYL and hold.

NEW YORK APP CON 132.75 363.1	UNICOM 122.8 (CTAF)	123.3 0
---	-------------------------------	-----------------------

RADAR REQUIRED



ELEV 147	D TDZE 147
----------	-------------------

REIL Rwy 33 **0**
MIRL Rwy 15-33 **0**

CATEGORY	A	B	C	D
LP MDA	720-1	573 (600-1)		NA
LNAV MDA	800-1	653 (700-1)		NA
C CIRCLING	800-1 653 (700-1)	960-1¼ 813 (900-1¼)		NA

NE-2, 02 JAN 2020 to 30 JAN 2020

NE-2, 02 JAN 2020 to 30 JAN 2020