

VORTAC BTG 116.6 Chan 113	APP CRS 255°	Rwy Idg TDZE Apt Elev 58	N/A N/A 58
---	------------------------	--	---------------------------------------

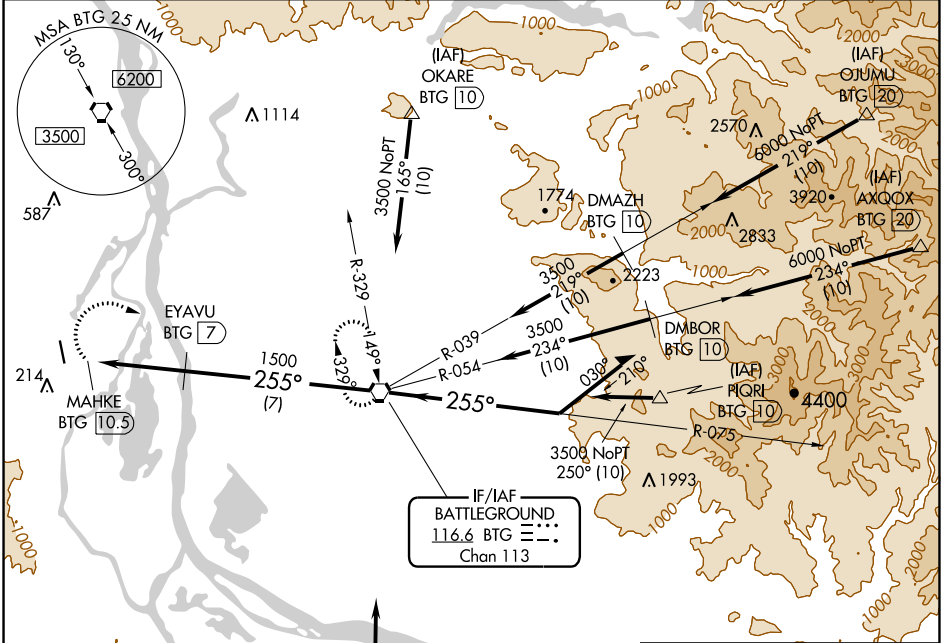
VOR/DME-A

SCAPOOSE INDUSTRIAL AIRPARK (SPB)

⚠ Circling NA west of Rwy 15-33. Helicopter visibility reduction below 1 SM NA. When local altimeter setting not received, use Portland Intl altimeter setting and increase all MDA 40 ft. Circling to Rwy 15 NA at night.

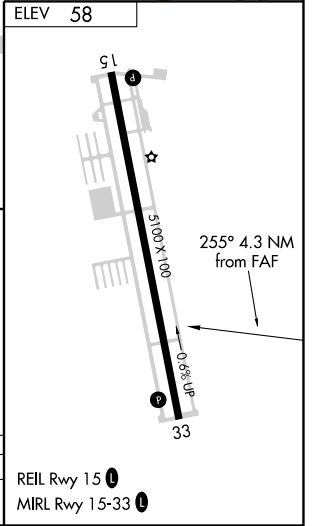
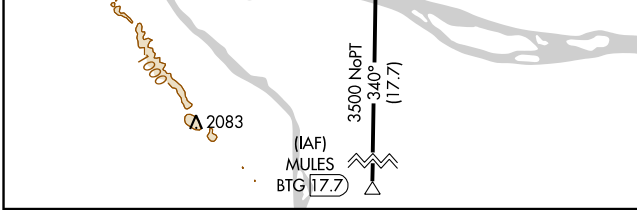
⚠ MISSED APPROACH: Climbing right turn to 4200 direct BTG VORTAC and hold, continue climb-in-hold to 4200.

ASOS 135.875	PORTLAND APP CON 124.35 299.2	CLNC DEL 121.65	UNICOM 122.8 (CTAF) 📻
------------------------	---	---------------------------	--



NW-1, 02 JAN 2020 to 30 JAN 2020

NW-1, 02 JAN 2020 to 30 JAN 2020



4200	BTG	BTG VORTAC	Remain within 10 NM
MAHKE BTG 10.5	EYAVU BTG 7	075°	5600
1500	3500	255°	3500
0.8	3.5 NM	7 NM	

CATEGORY	A	B	C	D
CIRCLING	600-1	542 (600-1)	600-1½ 542 (600-1½)	620-2 562 (600-2)