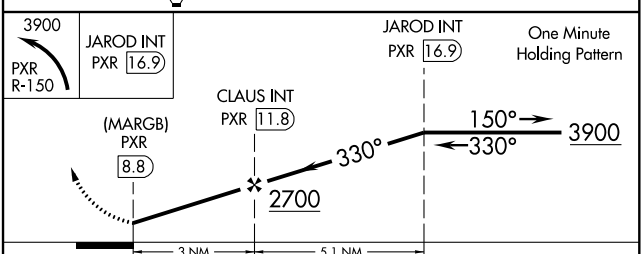
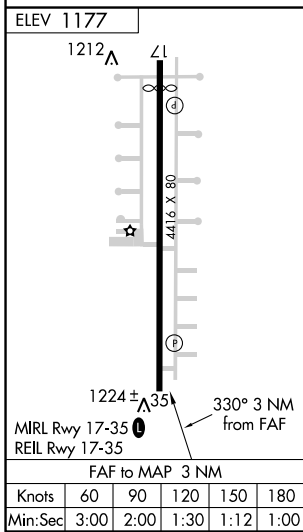
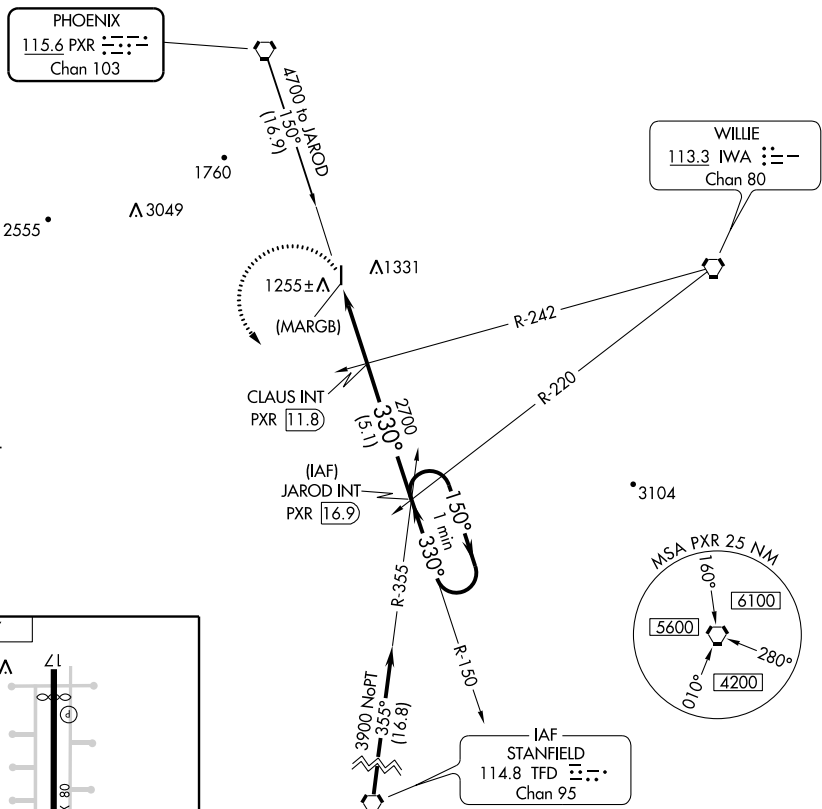


VORTAC PXR <b>115.6</b> Chan 103	APP CRS <b>330°</b>	Rwy Idg TDZE Apt Elev <b>N/A</b> <b>N/A</b> <b>1177</b>
--	------------------------	--

**VOR or GPS-A**  
STELLAR AIRPARK (P19)

<p>▼ ▲ NA</p> <p>Use Phoenix Sky Harbor Intl altimeter setting. Procedure not authorized at night.</p>	<p>MISSED APPROACH: Climbing left turn to 3900 via PXR R-150 to JAROD Int/PXR 16.9 DME and hold.</p>
<p>PHOENIX APP CON <b>123.7 363.0</b></p>	<p>UNICOM <b>122.975(CTAF)</b></p>



CATEGORY	A	B	C	D
CIRCLING	1640-1 463 (500-1)	1640-1 463 (500-1)	1640-1½ 463 (500-1½)	NA

SW-4, 02 JAN 2020 to 30 JAN 2020

SW-4, 02 JAN 2020 to 30 JAN 2020