

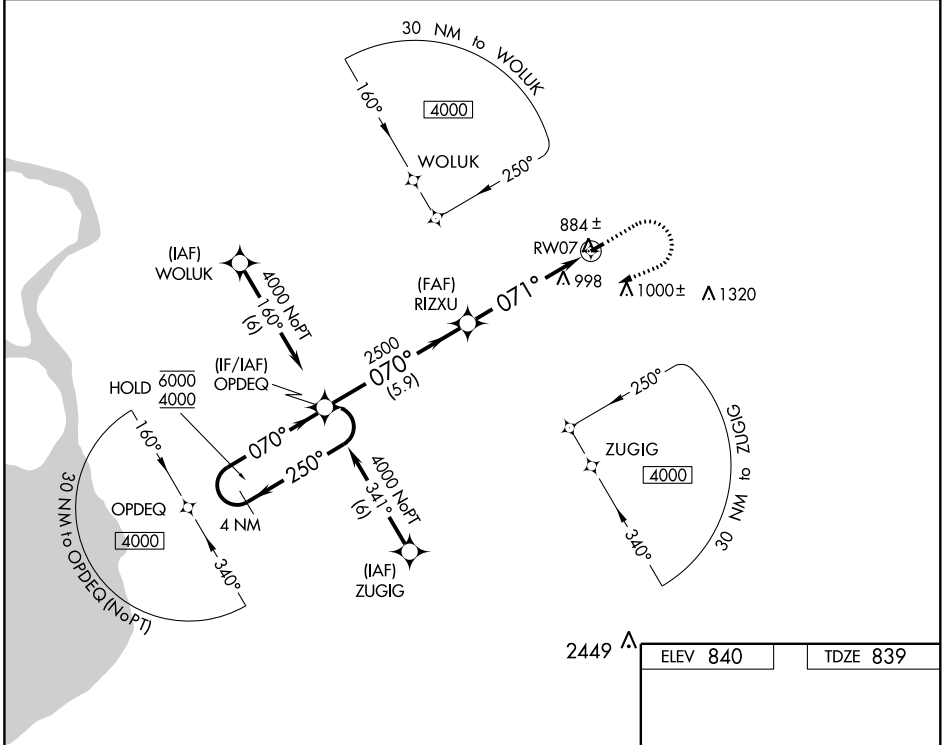
WAAS CH 93633 W07A	APP CRS 071°	Rwy Idg TDZE Apt Elev	3268 839 840
--	------------------------	-----------------------------	---

RNAV (GPS) RWY 7

AKRON/JESSON FIELD (9G3)

RNP APCH.	Procedure NA at night. Use Buffalo altimeter setting. Rwy 7 helicopter visibility reduction below 1 SM NA.	MISSED APPROACH: Climb to 1300 then climbing right turn to 4000 direct OPDEQ and hold, continue climb-in-hold to 4000.
-----------	---	--

BUF ASOS 135.35	BUFFALO APP CON 126.15 263.125	UNICOM 122.725 (CTAF) 0
---------------------------	--	-----------------------------------



NE-2, 02 JAN 2020 to 30 JAN 2020

NE-2, 02 JAN 2020 to 30 JAN 2020

Visual Segment - Obstacles.		1300	4000	OPDEQ
4 NM Holding Pattern		↑	↷	✧
6000 ← 250°	OPDEQ	RIZXU	RW07	
4000 → 070°				
	070°	2500	071°	
	5.9 NM	5.1 NM		
CATEGORY	A	B	C	D
LP MDA	1180-1	341 (400-1)	NA	
LNAV MDA	1300-1	461 (500-1)	NA	
CIRCLING	1380-1	540 (600-1)	NA	

