

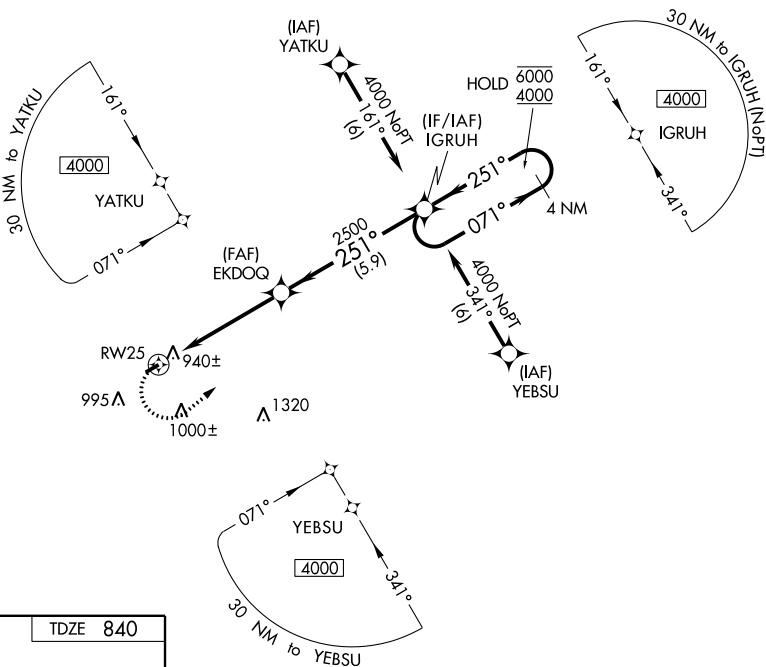
WAAS CH 40233 W25A	APP CRS 251°	Rwy Idg TDZE 840 Apt Elev 840	3268
--	------------------------	---	-------------

RNAV (GPS) RWY 25

AKRON/JESSON FIELD (9G3)

RNP APCH.	MISSED APPROACH: Climbing left turn to 4000 direct IGRUH and hold, continue climb-in-hold to 4000.
<p>▼ Rwy 25 helicopter visibility reduction below 1 SM NA. ▲ NA Use Buffalo altimeter setting. Procedure NA at night.</p>	

BUF ASOS 135.35	BUFFALO APP CON 126.15 263.125	UNICOM 122.725 (CTAF)
---------------------------	--	---------------------------------



ELEV 840	TDZE 840
----------	----------

2449 ft obstacle

Obstacles: **4000** ft, **897** ft

Approach angles: **251° to RWY 25**

Distances: **0.37 X UP**, **1955 X 50**, **3268 X 75**

905 ft obstacle

MIRL Rwy 7-25
REIL Rwy 25

Visual Segment - Obstacles.			
RWY 25		EKDQ	IGRUH
5.1 NM		5.9 NM	4 NM Holding Pattern
251°		251°	071°
4000		6000	4000
CATEGORY	A	B	C
LP MDA	1240-1	400 (400-1)	NA
LNAV MDA	1300-1	460 (500-1)	NA
C CIRCLING	1380-1	540 (600-1)	NA

NE-2, 02 JAN 2020 to 30 JAN 2020

NE-2, 02 JAN 2020 to 30 JAN 2020