

WAAS CH 69620 W14A	APP CRS 139°	Rwy Idg TDZE Apt Elev	4401 1319 1324
--	------------------------	-----------------------------	---

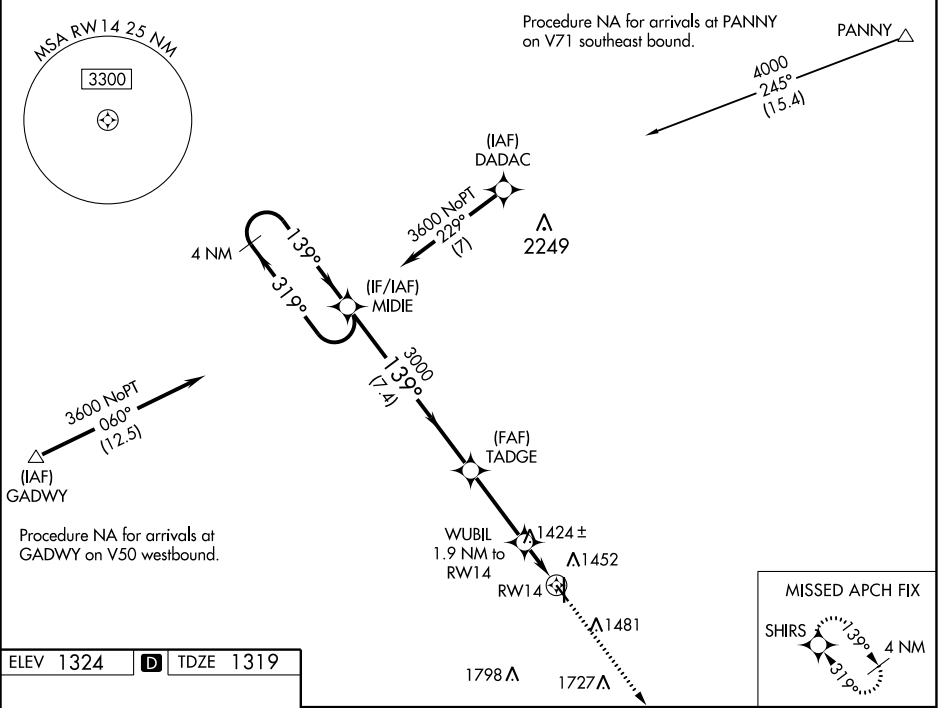
RNAV (GPS) RWY 14

BEATRICE MUNI (BIE)

⚠ For uncompensated Baro-VNAV systems, LNAV/VNAV NA below -17°C (2°F) or above 35°C (95°F).
⚠ DME/DME RNP-0.3 NA.

MISSED APPROACH: Climb to 3600 direct SHIRS and hold.

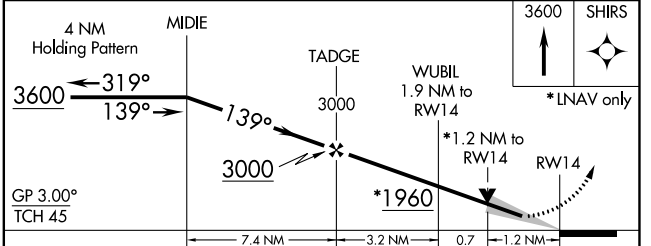
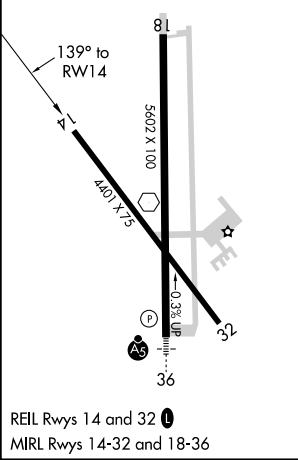
AWOS-3 125.325	MINNEAPOLIS CENTER 126.4 317.7	COLUMBUS RADIO 122.5	UNICOM 122.8 (CTAF) 0
--------------------------	--	--------------------------------	---------------------------------



NC-2, 02 JAN 2020 to 30 JAN 2020

NC-2, 02 JAN 2020 to 30 JAN 2020

ELEV 1324	D	TDZE 1319
-----------	----------	-----------



CATEGORY	A	B	C	D
LPV DA		1569-1	250 (300-1)	
LNAV/VNAV DA		1569-1	250 (300-1)	
LNAV MDA	1760-1 441 (500-1)		1760-1 $\frac{3}{8}$ 441 (500-1 $\frac{3}{8}$)	
C CIRCLING	1820-1 496 (500-1)		2000-2 676 (700-2)	2100-2 $\frac{1}{2}$ 776 (800-2 $\frac{1}{2}$)