

VOR/DME ATR <b>112.6</b> Chan <b>73</b>	APP CRS <b>234°</b>	Rwy Idg <b>5331</b> TDZE <b>51</b> Apt Elev <b>50</b>
---	------------------------	---

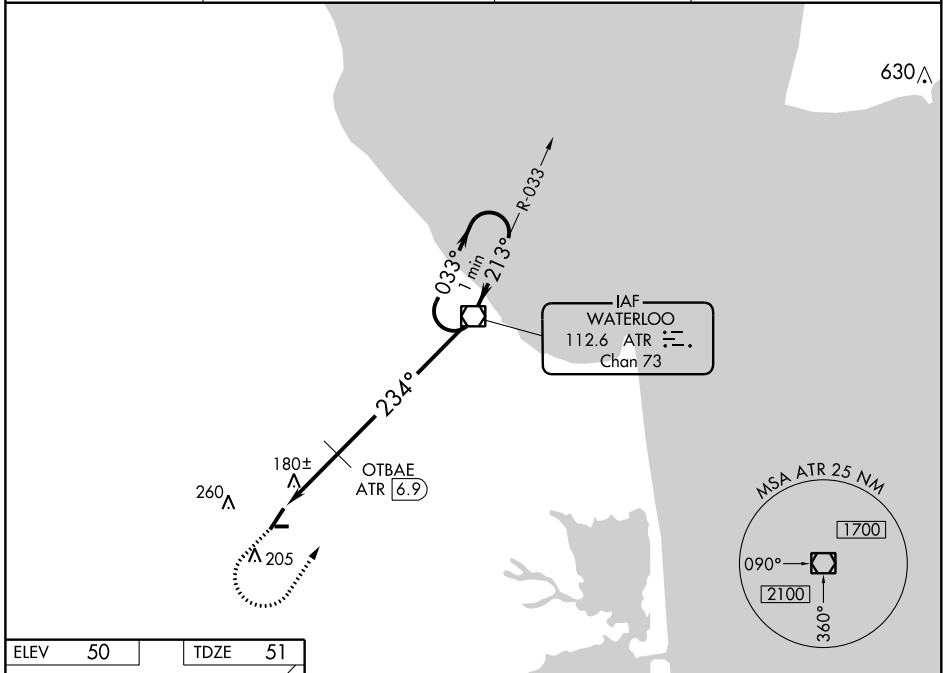
# VOR RWY 22

DELAWARE COASTAL (GED)

▼ When local altimeter setting not received, use Salisbury altimeter setting and increase all MDA 60 feet; increase S-22 and Circling Cats C/D visibility ¼ mile;  
 ▲ OTBAE fix minimums increase S-22 and Circling Cats C/D visibility ¼ mile.  
 Circling Rwy 10, 28 NA at night.

MISSED APPROACH: Climb to 800 then climbing left turn to 3000 direct ATR VOR/DME and hold.

ASOS <b>118.375</b>	DOVER APP CON <b>132.425 257.875</b>	CLNC DEL <b>125.55</b>	UNICOM <b>123.0 (CTAF) 0</b>
------------------------	---	---------------------------	---------------------------------



NE-3, 02 JAN 2020 to 30 JAN 2020

NE-3, 02 JAN 2020 to 30 JAN 2020

ELEV 50	TDZE 51
234° 9.7 NM from FAF	
REIL Rwy 4, 22, 10 and 28 0	
MIRL Rwy 4-22 and 10-28 0	
FAF to MAP 9.7 NM	
Knots	60 90 120 150 180
Min:Sec	9:42 6:28 4:51 3:53 3:14

800	3000	ATR	One Minute Holding Pattern
		ATR 9.7	OTBAE ATR 6.9
		ATR VOR/DME	3000
<p>* 740 when using Salisbury altimeter setting.</p>			
CATEGORY	A	B	C D
S-22	680-1	629 (700-1)	680-1¾ 629 (700-1¾)
<b>C</b> CIRCLING	680-1	630 (700-1)	720-1¾ 670 (700-1¾) 720-2 670 (700-2)
OTBAE FIX MINIMUMS			
S-22	440-1	389 (400-1)	440-1⅛ 389 (400-1⅛)
<b>C</b> CIRCLING	560-1 510 (600-1)	580-1 530 (600-1)	720-1¾ 670 (700-1¾) 720-2 670 (700-2)