

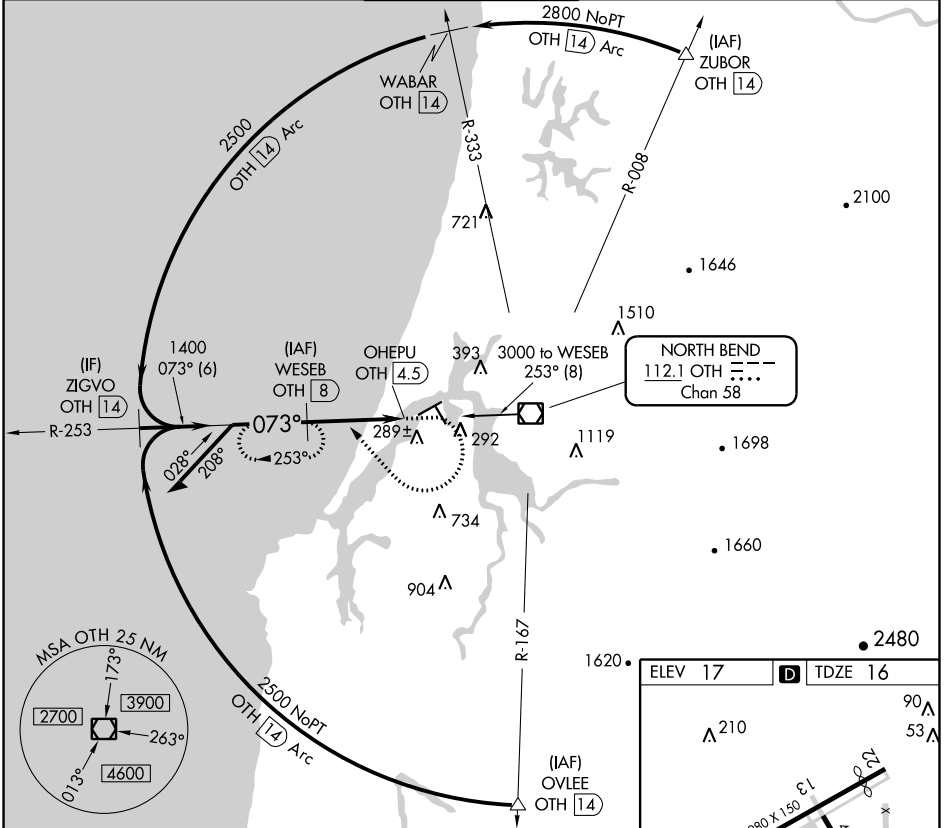
VOR/DME OTH 112.1 Chan 58	APP CRS 073°	Rwy Idg TDZE 16 Apt Elev 17	5320
---	------------------------	---	-------------

VOR/DME RWY 4

SOUTHWEST OREGON RGNL (OTH)

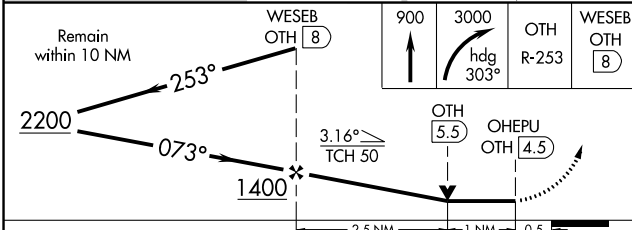
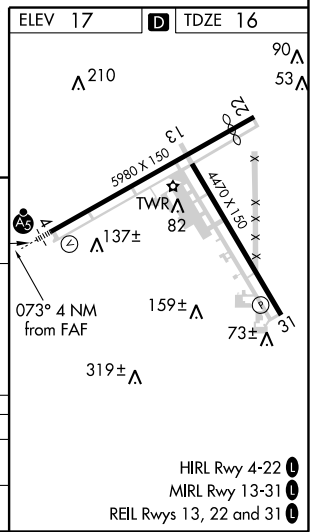
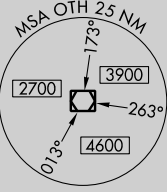
Night Landing: Rwy 31 NA. Inoperative table does not apply.	MALS	MISSED APPROACH: Climb to 900 then climbing right turn to 3000 on heading 303° and on OTH VOR/DME R-253 to WESEB/8 DME and hold, continue climb-in-hold to 3000.
--	------	--

AWOS-3PT 135.075	SEATTLE CENTER 127.55 254.35	NORTH BEND TOWER* 118.45 (CTAF)	MC MINNVILLE RADIO 122.4 255.4	GND CON 127.1
----------------------------	--	---	--	-------------------------



NW-1, 02 JAN 2020 to 30 JAN 2020

NW-1, 02 JAN 2020 to 30 JAN 2020



CATEGORY	A	B	C	D
S-4	540-1	524 (600-1)	540-1½	524 (600-1½)
CIRCLING	680-1 663 (700-1)	820-1 803 (900-1)	1100-3 1083 (1100-3)	1160-3 1143 (1200-3)