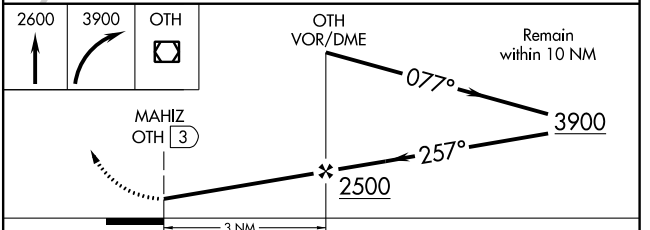
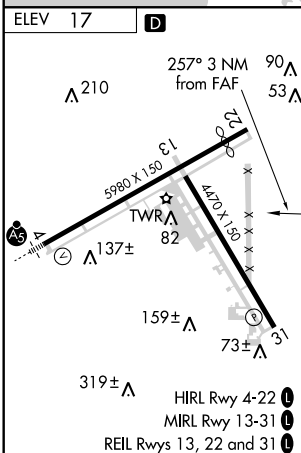
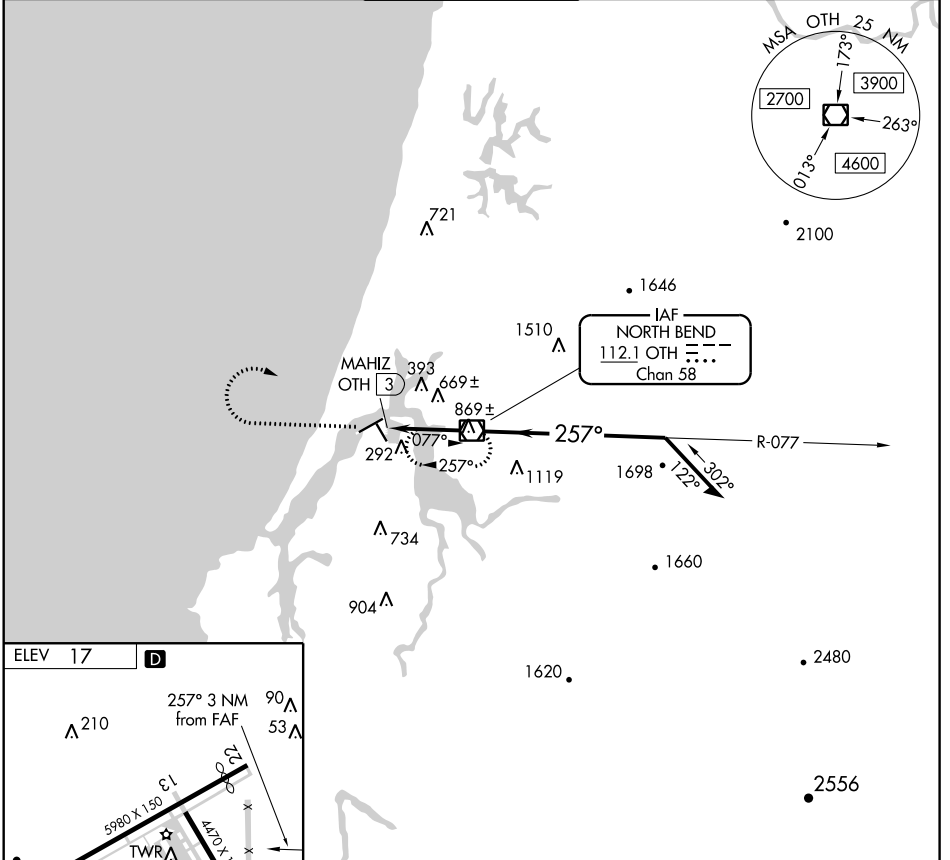


VOR/DME OTH <b>112.1</b> Chan <b>58</b>	APP CRS <b>257°</b>	Rwy Idg TDZE Apt Elev	<b>N/A</b> <b>N/A</b> <b>17</b>
---	------------------------	-----------------------------	---------------------------------------

**VOR-A**  
SOUTHWEST OREGON RGNL (OTH)

**T** Night Landing: Rwy 31 NA.  
**A** Helicopter visibility reduction below 1 SM NA.  
 MISSED APPROACH: Climb to 2600 then climbing right turn to 3900 direct OTH VOR/DME and hold.

AWOS-3PT <b>135.075</b>	SEATTLE CENTER <b>127.55 254.35</b>	<b>NORTH BEND TOWER*</b> <b>118.45 (CTAF)</b> <b>0</b>	MC MINNVILLE RADIO <b>122.4 255.4</b>	GND CON <b>127.1</b>
----------------------------	--	---	--	-------------------------



FAF to MAP 3 NM					
Knots	60	90	120	150	180
Min:Sec	3:00	2:00	1:30	1:12	1:00
<b>C</b> CIRCLING	A 1300-1¼ 1283 (1300-1¼)		B 1300-1½ 1283 (1300-1½)		C 1300-3
					D 1283 (1300-3)

NW-1, 02 JAN 2020 to 30 JAN 2020

NW-1, 02 JAN 2020 to 30 JAN 2020