

APCH CRS	Rwy Idg	12,001
325°	THRE	105
	Arprt Elev	113

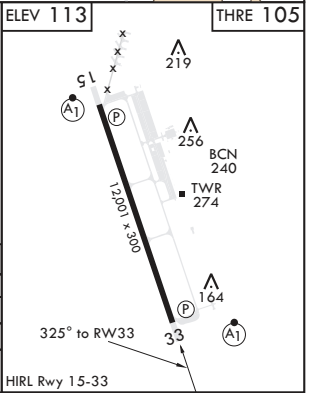
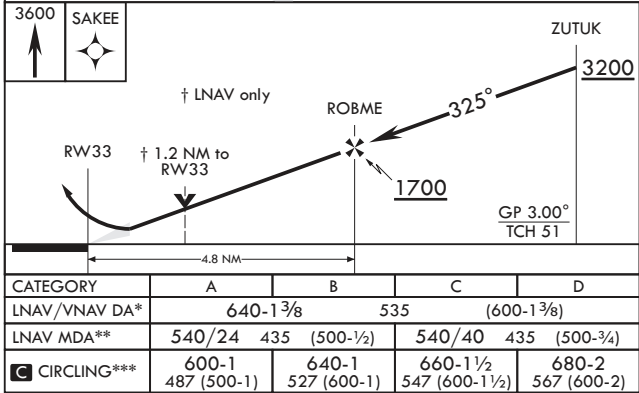
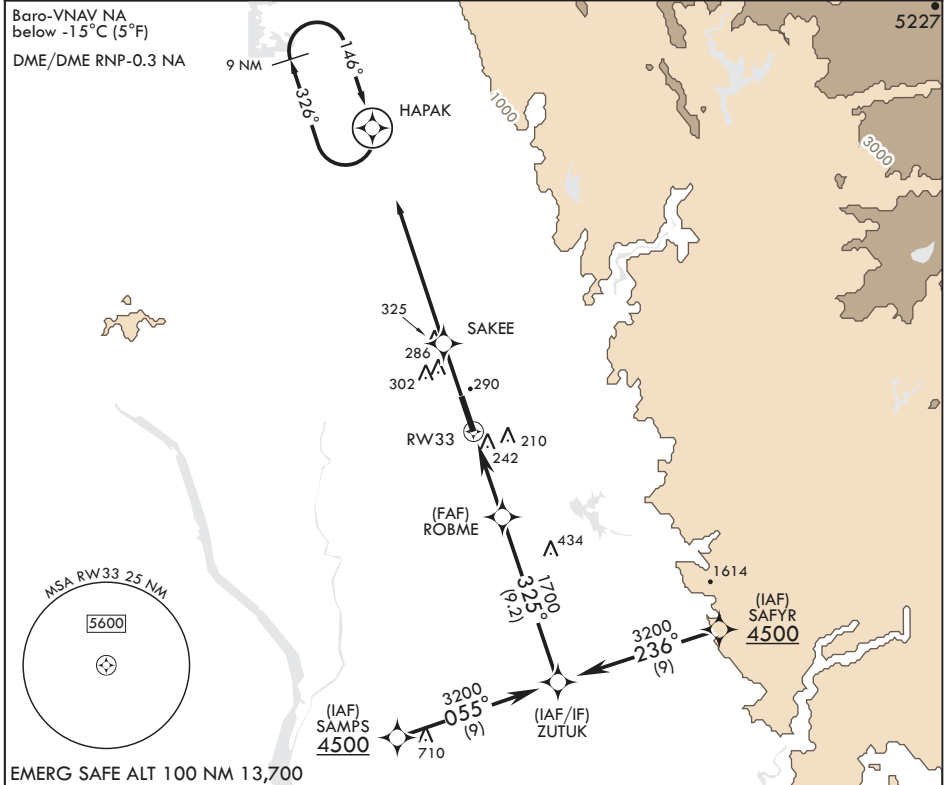
AL-771 (USAF)

BEALE AFB (KBAB)

**ALSF-1** MISSED APPROACH: Climb direct SAKEE, then track 326° to HAPAK and hold, maintain 3600.

\* When ALS inop, increase all CAT's vis to 1 7/8 miles.  
 \*\* When ALS inop, increase CAT AB RVR to 55 and vis to 1 mile, CAT CD vis to 1 1/4 miles.  
 \*\*\* Circling not authorized E of Rwy 15-33.

ATIS* 124.55 273.5	NORCAL APP CON 125.4 259.1	TOWER* 119.4 284.75	GND CON 121.6 257.75
-----------------------	-------------------------------	------------------------	-------------------------



SW-2, 02 JAN 2020 to 30 JAN 2020

SW-2, 02 JAN 2020 to 30 JAN 2020