

MARYSVILLE, CALIFORNIA

ILS or LOC Y RWY 15

LOC I-BAB 109.5	APCH CRS 145°	Rwy Idg 12,001
		TDZE 113
		Arpt Elev 113

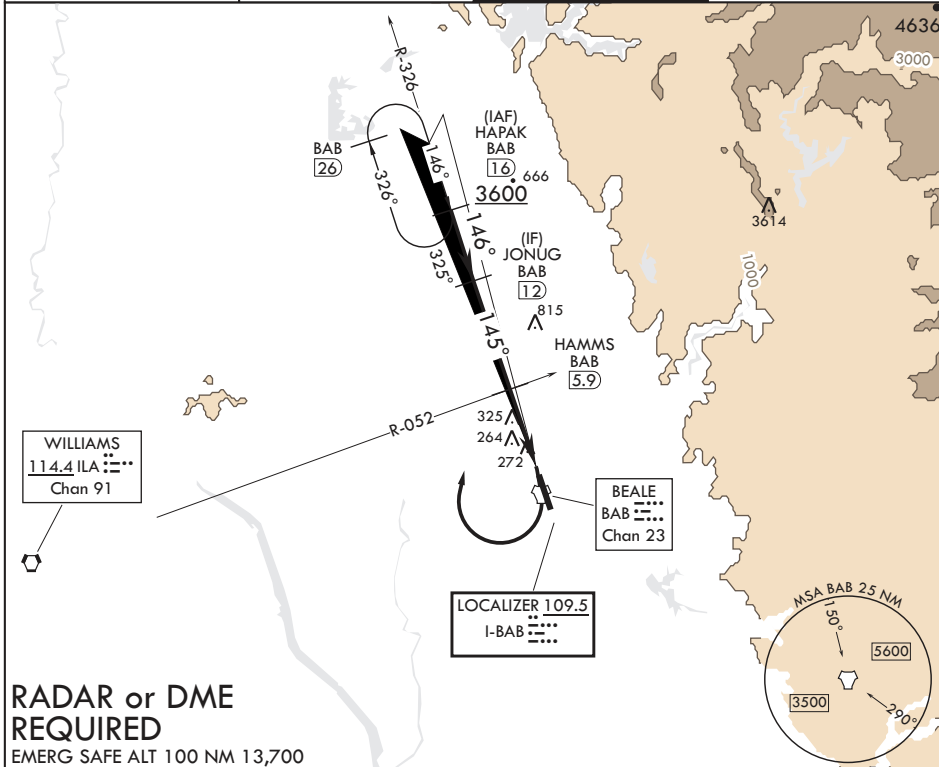
AL-771 (USAF)

BEALE AFB (KBAB)

⚠ * When ALS inop, increase all CAT RVR to 40 and vis to 3/4 mile.
 ** When ALS inop, increase CAT AB RVR to 55 and vis to 1 mile, CAT CDE vis to 1 3/8 miles.
 *** Circling not authorized E of Rwy 15-33.

ALSF-1
MISSED APPROACH: Climb to 4400 direct BAB TACAN. Turn right to intercept BAB R-326 to HAPAK and hold, continue climb in hold to 4400.

ATIS* 124.55 273.5	NORCAL APP CON 125.4 259.1	TOWER* 119.4 284.75	GND CON 121.6 257.75
------------------------------	--------------------------------------	-------------------------------	--------------------------------



RADAR or DME REQUIRED
 EMERG SAFE ALT 100 NM 13,700

JONUG 12	VGSI and glideslope not coincident.	4400 BAB	HAPAK BAB 16	ELEV 113	TDZE 113
2600	HAMMS ILA R-052 5.9	↑ LOC only	TACAN	145° 4.9NM from FAF	BCN
1600	GS 2.75° TCH 47	↑ 2.6	HEGOP 1.5	127 269	TWR 274
		4.4 NM	.5 NM	12,001 x 300	33
C CIRCLING***	620-1 507 (600-1)	620-1½ 507 (600-1½)	680-2 567 (600-2)	840-2½ 727 (800-2½)	HIRL Rwy 15-33

MARYSVILLE, CALIFORNIA

39°08'N - 121°26'W

BEALE AFB (KBAB)

Amdt 5 20JUL17

ILS or LOC Y RWY 15

SW-2, 02 JAN 2020 to 30 JAN 2020

SW-2, 02 JAN 2020 to 30 JAN 2020