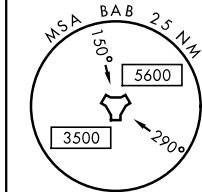
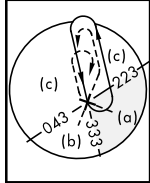
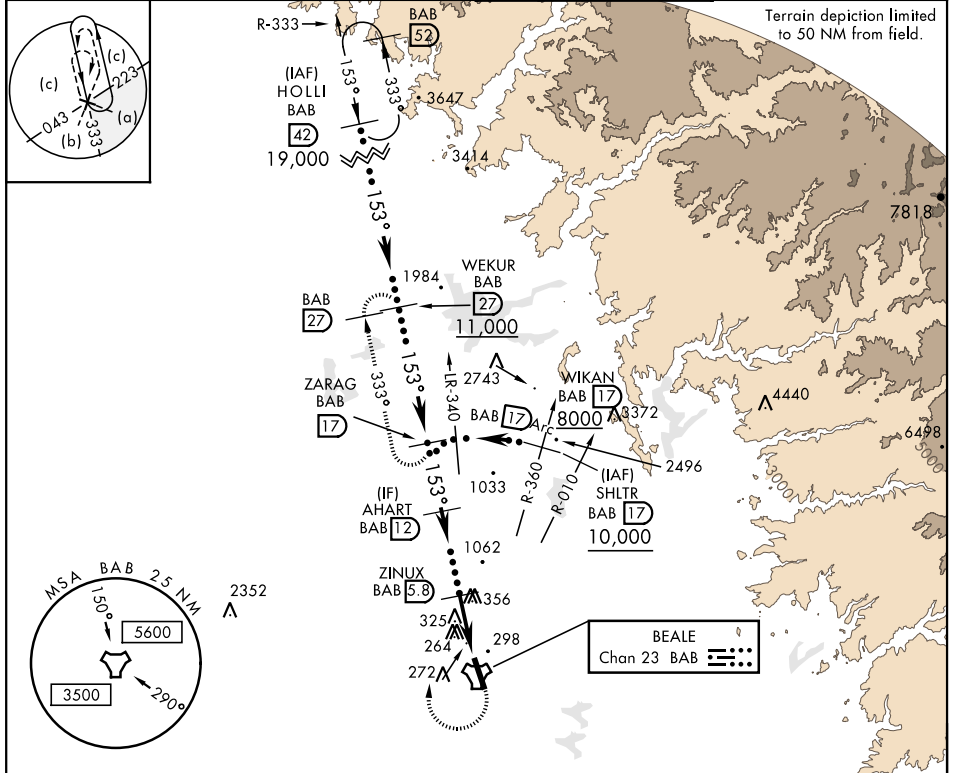


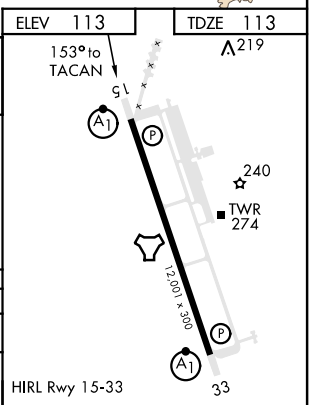
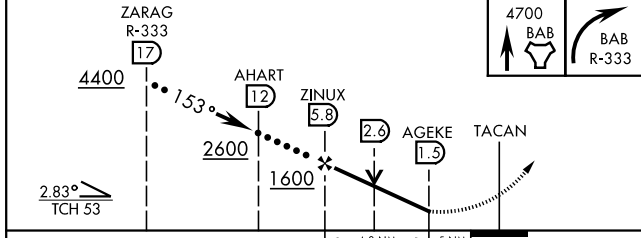
# HI-TACAN Z RWY 15

TACAN Chan <b>23</b>	APCH CRS <b>153°</b>	Rwy ldg <b>12,001</b> TDZE <b>113</b> Arpt Elev <b>113</b>	JAL-771 [USAF]	BEALE AFB (KBAB)
▼ * When ALS inop, increase CAT CDE vis to 1½ miles. ** Circling not authorized E of Rwy 15-33.			ALSF-1 	MISSED APPROACH: Climb to 4700 direct to BAB TACAN. Turn right to intercept BAB R-333 to ZARAG and hold, continue climb in hold to 4700.

ATIS ★ <b>124.55 273.5</b>	NORCAL APP CON <b>125.4 259.1</b>	BEALE TOWER ★ <b>119.4 284.75</b>	GND CON <b>121.6 257.75</b>
-------------------------------	--------------------------------------	--------------------------------------	--------------------------------



EMERG SAFE ALT 100 NM 13,700



CATEGORY	C	D	E
S-15*	640/55	527	(600-1)
CIRCLING**	640-1½ 527 (600-1½)	680-2 567 (600-2)	840-2½ 727 (800-2½)

HIRL Rwy 15-33

# HI-TACAN Z RWY 15

SW-2, 02 JAN 2020 to 30 JAN 2020

SW-2, 02 JAN 2020 to 30 JAN 2020