

WAAS CH 78323 W30A	APP CRS 306°	Rwy Idg 7959 TDZE 591 Apt Elev 597
--	------------------------	---

RNAV (GPS) Y RWY 30

GARY/CHICAGO INTL (GYY)

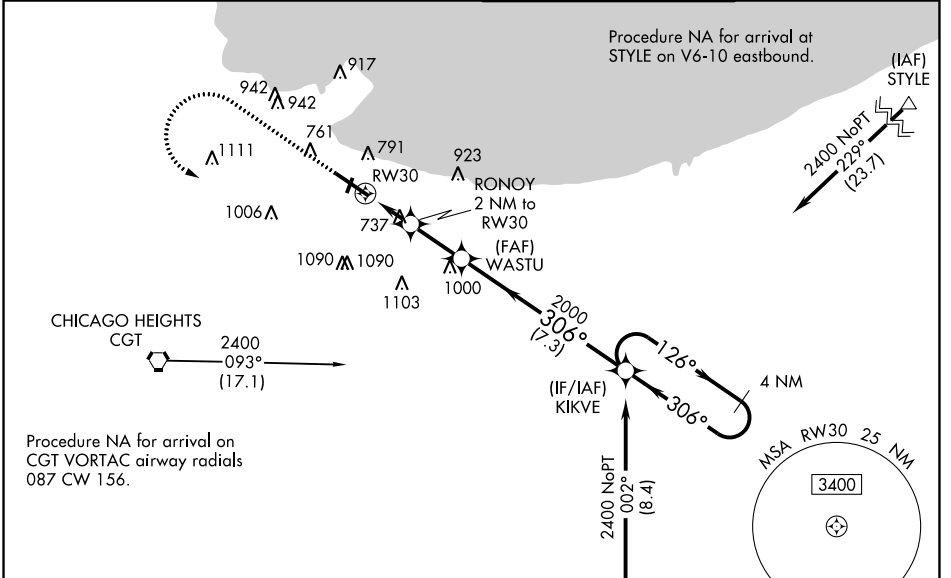
⚠ For uncompensated Baro-VNAV systems, LNAV/VNAV NA below -16°C (4°F) or above 54°C (130°F). DME/DME RNP-0.3 NA. When local altimeter setting not received, use Chicago Midway Intl altimeter setting and increase all DA 47 feet and all MDA 60 feet, increase LNAV/VNAV visibility all Cats and LNAV Cats C/D visibility to RVR 5000, increase Circling Cat C/D visibility ¼ mile. Baro-VNAV and VDP NA with Chicago Midway Intl altimeter setting. **RVR 1800 authorized with use of FD or AP or HUD to DA, NA when using Chicago Midway Intl altimeter setting.

MALSR

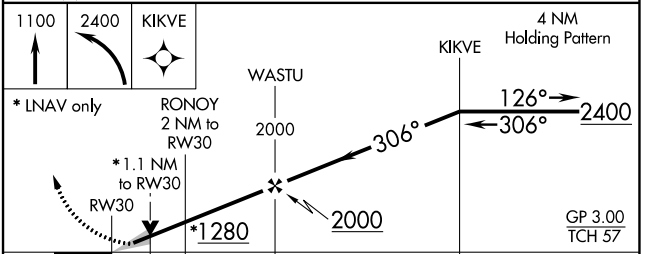
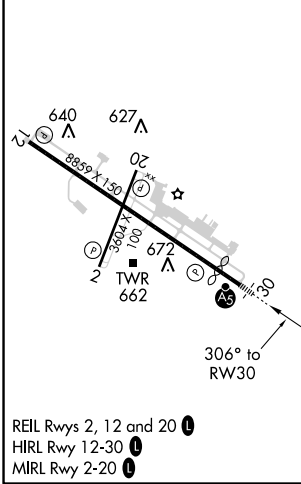


MISSED APPROACH:
Climb to 1100 then climbing left turn to 2400 direct KIKVE and hold.

ATIS 134.575	CHICAGO APP CON 133.1 285.6	GARY TOWER ★ 125.6 (CTAF)	GND CON 121.9
------------------------	---------------------------------------	-------------------------------------	-------------------------



ELEV 597	D	TDZE 591
----------	----------	----------



CATEGORY	A	B	C	D
LPV DA	** 791/24 200 (200-½)			
LNAV/VNAV DA	991/45 400 (400-¾)			
LNAV MDA	1000/24	409 (500-½)	1000/40	409 (500-¾)
C CIRCLING	1140-1 543 (600-1)	1180-1 583 (600-1)	1400-2¼ 803 (900-2¼)	1420-2¾ 823 (900-2¾)

EC-2, 02 JAN 2020 to 30 JAN 2020

EC-2, 02 JAN 2020 to 30 JAN 2020