

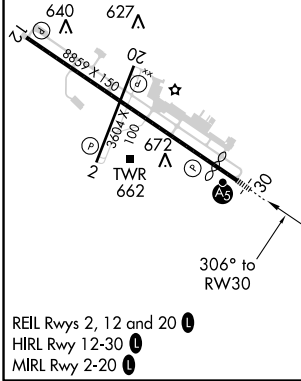
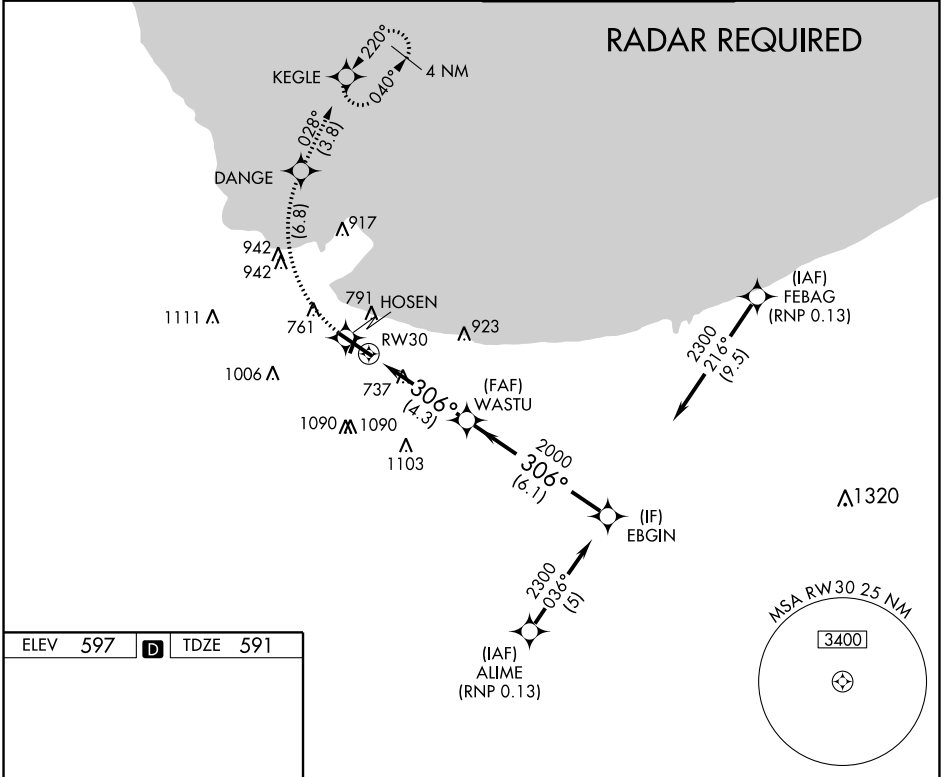
APP CRS 306°	Rwy Idg 7959
	TDZE 591
	Apt Elev 597

RNAV (RNP) Z RWY 30

GARY/CHICAGO INTL (GYY)

<p>▼ For uncompensated Baro-VNAV systems, procedure NA below -16°C (4°F) or above 54°C (130°F). Missed approach requires RNP less than 1.0. RF and GPS required.</p>	<p>MALSR</p>	<p>MISSED APPROACH: Climb to 2100 on track 306° to HOSEN, right turn to DANGE, then track 028° to KEGLE and hold.</p>

<p>ATIS 134.575</p>	<p>CHICAGO APP CON 133.1 285.6</p>	<p>GARY TOWER ★ 125.6 (CTAF) 0</p>	<p>GND CON 121.9</p>
--------------------------------	---	---	---------------------------------



ELEV 597	D	TDZE 591		
2100	HOSEN	DANGE	KEGLE	EBGIN
tr 306°				
RW30		WASTU	2300	GP 3.00°
		2000		TCH 57
4.3 NM		6.1 NM		
CATEGORY	A	B	C	D
RNP 0.13 DA	942-5/8		351 (400-5/8)	

REIL Rws 1, 2 and 20 **0**
 HIRL Rwy 12-30 **0**
 MIRL Rwy 2-20 **0**

EC-2, 02 JAN 2020 to 30 JAN 2020

EC-2, 02 JAN 2020 to 30 JAN 2020