

WAAS CH <b>42716</b> <b>W35A</b>	APP CRS <b>355°</b>	Rwy ldg <b>6844</b> TDZE <b>1299</b> Apt Elev <b>1300</b>
--	------------------------	---

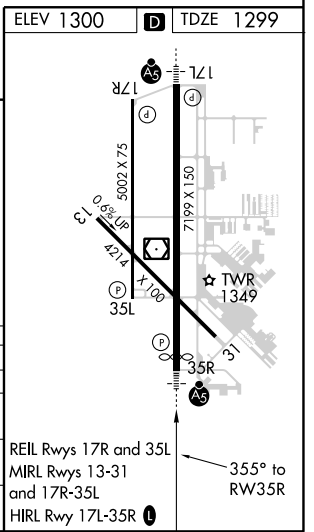
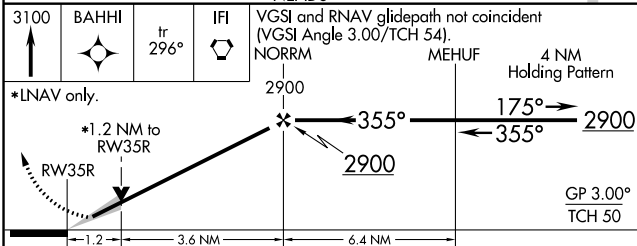
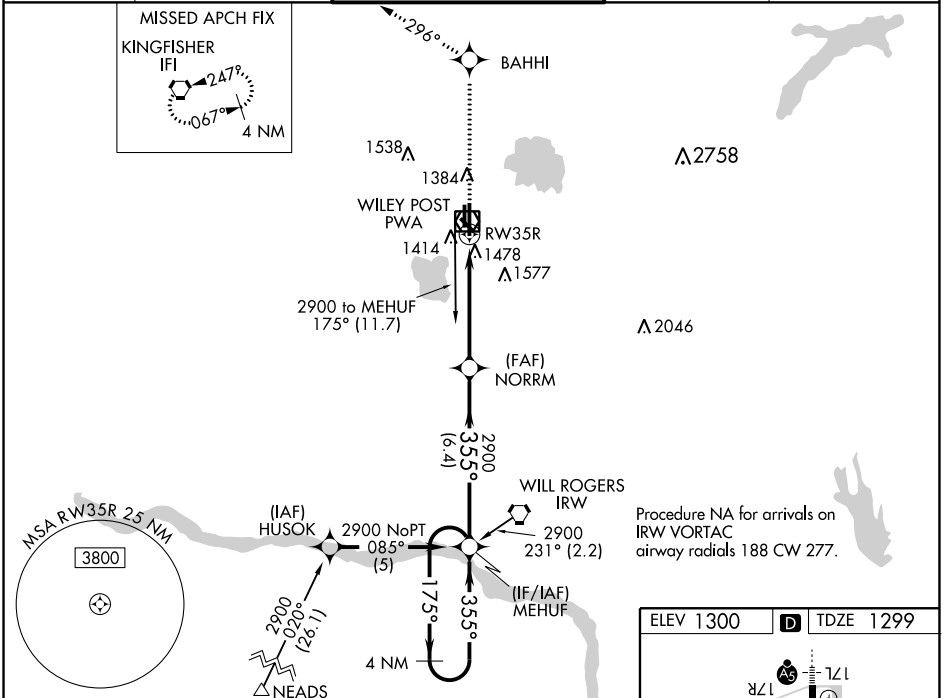
# RNAV (GPS) RWY 35R

WILEY POST (PWA)

**Baro-VNAV NA** when using Will Rogers World altimeter setting. For uncompensated Baro-VNAV systems, LNAV/VNAV NA below -17°C (29°F) or above 46°C (114°F).  
**DME/DME RNP-0.3 NA.** When local altimeter setting not received, use Will Rogers World altimeter setting and increase all DA 21 feet and all MDA 40 feet. VDP NA with Will Rogers World altimeter setting.

**MALSR**  
 MISSED APPROACH: Climb to 3100 direct BAHHI and on track 296° to IFI VORTAC and hold.

ATIS <b>128.725</b>	OKE CITY APP CON <b>124.6 266.8</b>	WILEY POST TOWER ★ <b>126.9(CTAF) 306.9</b>	GND CON <b>121.7</b>	UNICOM <b>122.95</b>
------------------------	--	--	-------------------------	-------------------------



CATEGORY	A	B	C	D
LPV DA	1499-1/2		200 (200-1/2)	
LNAV/VNAV DA	1769-1/4		470 (500-1/4)	
LNAV MDA	1740-1/2 441 (500-1/2)	1740-3/4 441 (500-3/4)	1740-1 441 (500-1)	1740-1 441 (500-1)
CIRCLING	1780-1 480 (500-1)	1880-1 580 (600-1/2)	1880-2 580 (600-2)	1880-2 580 (600-2)

SC-1, 02 JAN 2020 to 30 JAN 2020

SC-1, 02 JAN 2020 to 30 JAN 2020