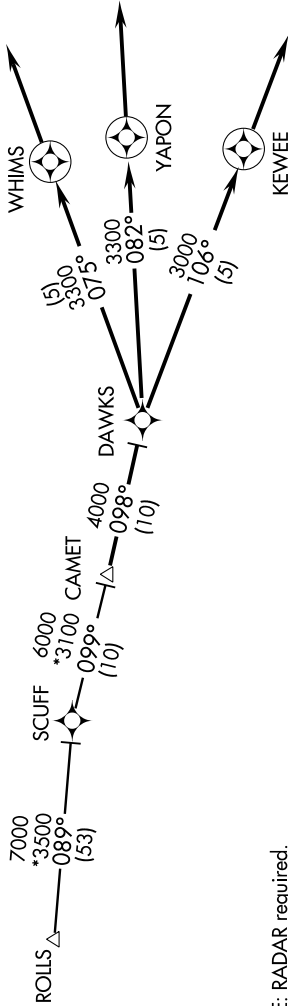


DAWKS ONE ARRIVAL (RNAV)

OKLAHOMA CITY, OKLAHOMA

SC-1, 02 JAN 2020 to 30 JAN 2020

OKE CITY APP CON
124.6 266.8
WILEY POST ATIS
128.725
TINKER AFB ATIS *
270.1
UNIVERSITY OF OKLAHOMA
WESTHEIMER AWOS-3
119.55



NOTE: RADAR required.

NOTE: RNAV 1.

NOTE: DME/DME/IRU or GPS required.

ARRIVAL ROUTE DESCRIPTION

ROLLS TRANSITION (ROLLS.DAWKS1):

SCUFF TRANSITION (SCUFF.DAWKS1):

From CAMET on track 098° to DAWKS.

LANDING OUN: From DAWKS on track 106° to KEWEE, then on track 106°.

Expect RADAR vectors to final approach course.

LANDING TIK: From DAWKS on track 082° to YAPON, then on track 082°.

Expect RADAR vectors to final approach course.

LANDING PWA RW17L: From DAWKS on track 075° to WHIMS, then on track 075°.

Expect RADAR vectors to final approach course.

LANDING PWA RW35R: From DAWKS on track 106° to KEWEE, then on track 106°.

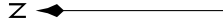
Expect RADAR vectors to final approach course.



WILEY POST



TINKER AFB



N



UNIVERSITY OF OKLAHOMA
WESTHEIMER

NOTE: Chart not to scale.

DAWKS ONE ARRIVAL (RNAV)

(CAMET.DAWKS1) 24JUL14

OKLAHOMA CITY, OKLAHOMA

SC-1, 02 JAN 2020 to 30 JAN 2020