

(LAS5.LAS) 17229

# LAS VEGAS FIVE DEPARTURE

AL-662 (FAA)

MC CARRAN INTL (LAS)  
LAS VEGAS, NEVADA

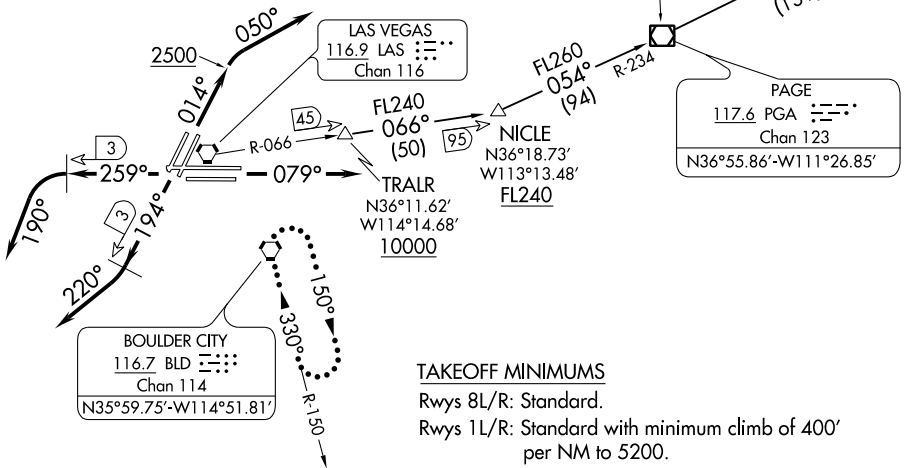
D-ATIS  
132.4  
CLNC DEL  
118.0  
CPDLC  
GND CON  
121.1 270.8 E of 1R/19L  
121.9 254.3 W of 1R/19L  
LAS VEGAS TOWER  
118.75 257.8 (Rwys 1L/19R, 1R/19L)  
119.9 257.8 (Rwys 8L/26R, 8R/26L)  
LAS VEGAS DEP CON  
125.9 307.25 (Rwys 19L/R, 26L/R)  
133.95 353.7 (Rwys 1L/R, 8L/R)

MILFORD  
112.1 MLF  
Chan 58  
N38°21.62'-W113°00.79'

BRYCE CANYON  
112.8 BCE  
Chan 75  
N37°41.35'-W112°18.23'

DOVE CREEK  
114.6 DVC  
Chan 93  
N37°48.52'-W108°55.88'  
L-9, H-3

**TOP ALTITUDE:  
7000**



PAGE  
117.6 PGA  
Chan 123  
N36°55.86'-W111°26.85'

### TAKEOFF MINIMUMS

- Rwys 8L/R: Standard.
- Rwys 1L/R: Standard with minimum climb of 400' per NM to 5200.
- Rwys 19L/R, 26L/R: Standard with minimum climb of 360' per NM to 7000.

NOTE: RADAR and DME required.

NOTE: Chart not to scale.

### DEPARTURE ROUTE DESCRIPTION

**TAKEOFF RUNWAYS 1L/R:** Climb heading 014° to 2500, then climbing right turn heading 050°, thence. . . .

**TAKEOFF RUNWAYS 8L/R:** Climb heading 079°, thence. . . .

**TAKEOFF RUNWAYS 19L/R:** Climb heading 194° until LAS VORTAC 3 DME, then climbing right turn heading 220°, thence. . . .

**TAKEOFF RUNWAYS 26L/R:** Climb heading 259° until LAS VORTAC 3 DME, then climbing left turn heading 190°, thence. . . .

. . . . RADAR vectors to transition or assigned route. Maintain 7000, expect clearance to filed altitude two minutes after departure.

**LOST COMMUNICATIONS:** If no contact with ATC upon reaching 7000, proceed direct BLD VORTAC then climb in BLD VORTAC holding pattern to appropriate MEA for route of flight.

**DOVE CREEK TRANSITION (LAS5.DVC):** From over TRALR on LAS R-066 to NICLE, then on PGA R-234 to PGA VOR/DME, then on PGA R-053 and DVC R-233 to DVC VORTAC.

# LAS VEGAS FIVE DEPARTURE

(LAS5.LAS) 17AUG17

LAS VEGAS, NEVADA  
MC CARRAN INTL (LAS)

SW-4, 02 JAN 2020 to 30 JAN 2020

SW-4, 02 JAN 2020 to 30 JAN 2020