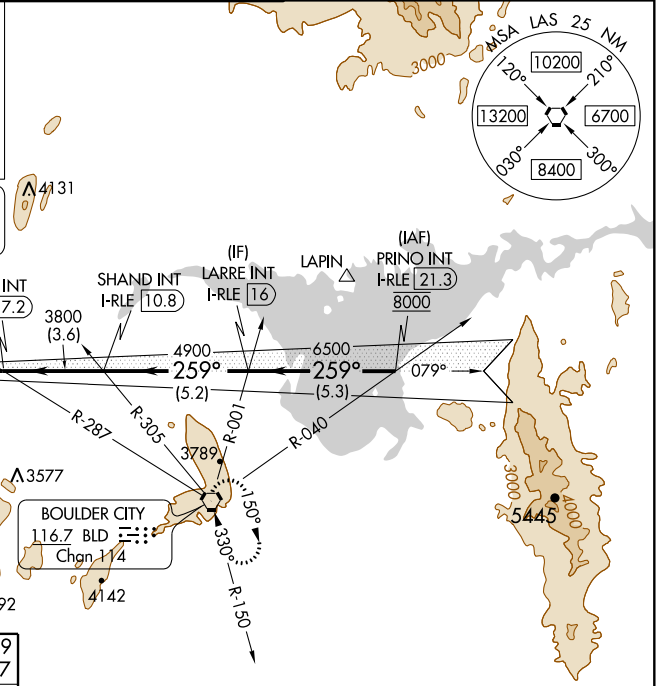
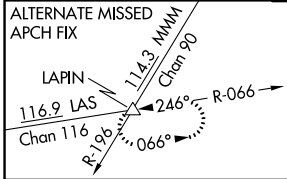


LOC/DME I-RLE 111.5 Chan 52	APP CRS 259°	Rwy Idg TDZE Apt Elev	26L 26R 10525 12639 2069 2067 2181 2181
--	------------------------	-----------------------------	--

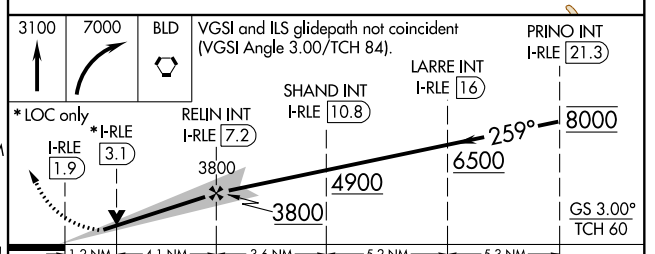
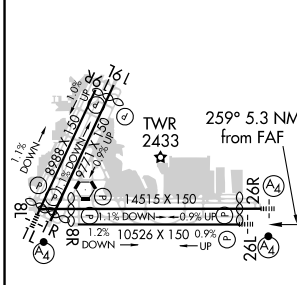
ILS or LOC RWY 26L

MC CARRAN INTL (LAS)

D-ATIS 132.4	LAS VEGAS APP CON 125.025 379.15 (West) 125.6 282.2 (East)	LAS VEGAS TOWER 118.75 257.8 (Rwy 1L/19R, 1R/19L) 119.9 257.8 (Rwy 8L/26R, 8R/26L)	GND CON 121.1 270.8 E of 1R/19L 121.9 254.3 W of 1R/19L	CLNC DEL 118.0	CPDLC
	<p>⚠ Inop table does not apply to S-ILS Rwy 26L and Sidestep Rwy 26R. For inop ALS, increase S-LOC 26L Cat C/D/E visibility to 1½ SM.</p>		<p>⚠ MISSED APPROACH: Climb to 3100 then climbing right turn to 7000 direct BLD VORTAC and hold, continue climb-in-hold to 7000.</p>		



ELEV 2181	D TDZE 26L 2069 TDZE 26R 2067
-----------	---



CATEGORY	A	B	C	D	E
S-ILS 26L	2269-¾ 200 (100-¾)				
S-LOC 26L	2520-¾ 451 (400-¾)	2520-1 451 (400-1)			
SIDESTEP 26R	2560-1 493 (400-1)	2560-1½ 493 (400-1½)	3100-2¾ 919 (1000-2¾)	2560-2 493 (400-2)	
C CIRCLING	3020-1¼ 839 (900-1¼)	3040-1¼ 859 (900-1¼)	3100-2¾ 919 (1000-2¾)	3540-3 1359 (1400-3)	

FAF to MAP 5.3 NM					
Knots	60	90	120	150	180
Min:Sec	5:18	3:32	2:39	2:07	1:46

SW-4, 02 JAN 2020 to 30 JAN 2020

SW-4, 02 JAN 2020 to 30 JAN 2020