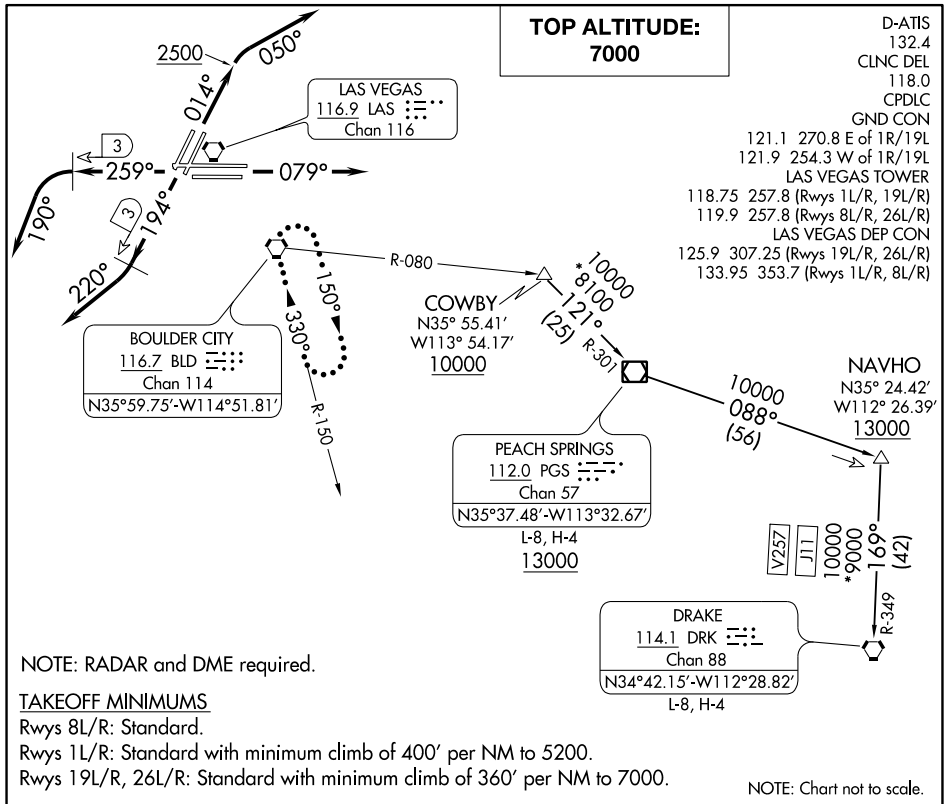


(HOOVR6.LAS) 17229

HOOVER SIX DEPARTURE

AL-662 (FAA)

MC CARRAN INTL (LAS)
LAS VEGAS, NEVADA



SW-4, 02 JAN 2020 to 30 JAN 2020

SW-4, 02 JAN 2020 to 30 JAN 2020

DEPARTURE ROUTE DESCRIPTION

TAKEOFF RUNWAYS 1L/R: Climb heading 014° to 2500, then climbing right turn heading 050°, thence. . . .

TAKEOFF RUNWAYS 8L/R: Climb heading 079°, thence. . . .

TAKEOFF RUNWAYS 19L/R: Climb heading 194° until LAS VORTAC 3 DME, then climbing right turn heading 220°, thence. . . .

TAKEOFF RUNWAYS 26L/R: Climb heading 259° until LAS VORTAC 3 DME, then climbing left turn heading 190°, thence. . . .

. . . .RADAR vectors to transition or assigned route. Maintain 7000, expect clearance to filed altitude two minutes after departure.

LOST COMMUNICATIONS: If no contact with ATC upon reaching 7000, proceed direct BLD VORTAC, then climb in BLD VORTAC holding pattern to appropriate MEA for route of flight.

DRAKE TRANSITION (HOOVR6.DRK): From over COWBY on PGS R-301 to PGS VOR/DME, then on PGS R-088 to NAVHO, then on DRK R-349 to DRK VORTAC.

PEACH SPRINGS TRANSITION (HOOVR6.PGS): From over COWBY on PGS R-301 to PGS VOR/DME.

HOOVER SIX DEPARTURE

(HOOVR6.LAS) 17AUG17

LAS VEGAS, NEVADA
MC CARRAN INTL (LAS)