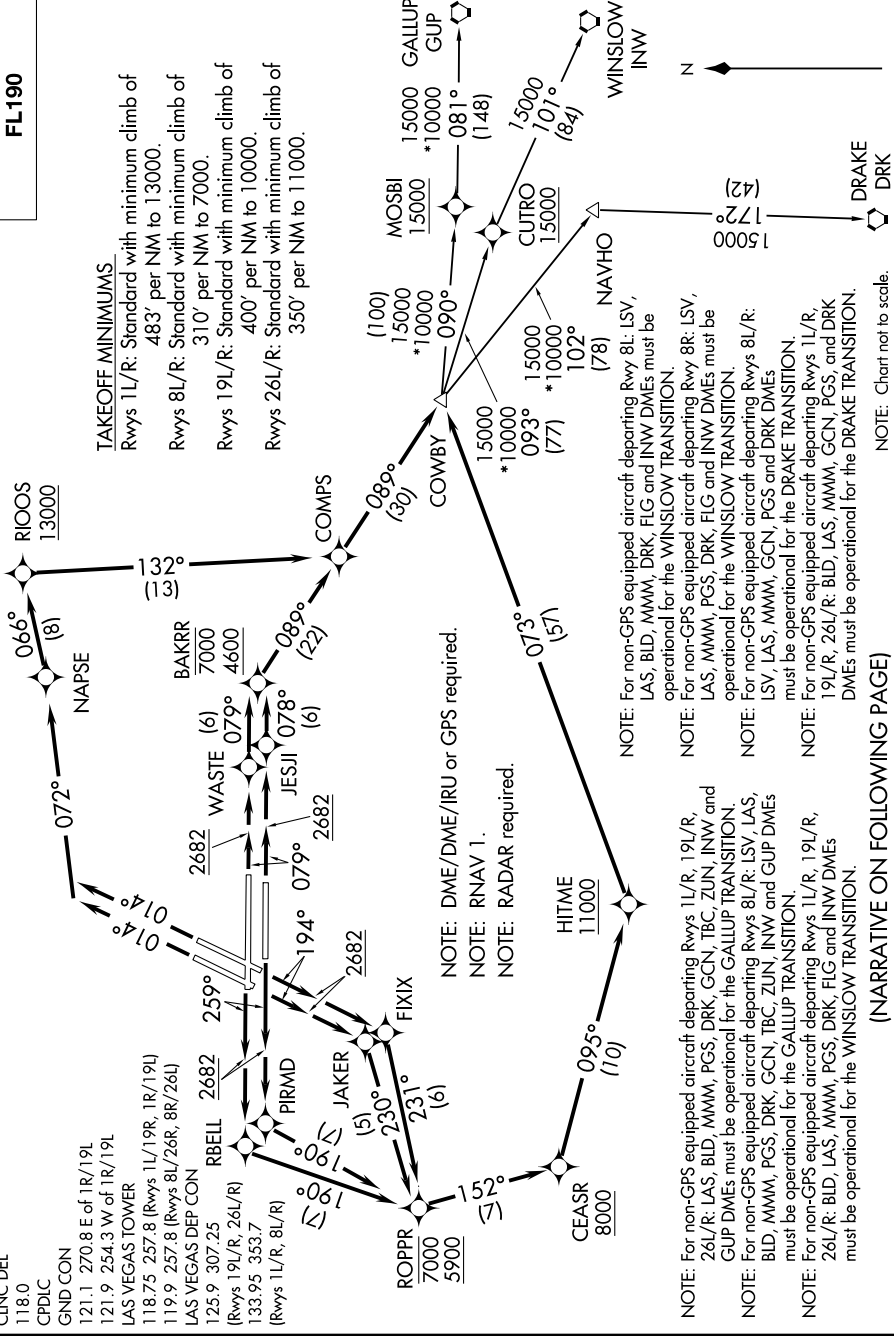


SW-4, 02 JAN 2020 to 30 JAN 2020

TOP ALTITUDE:
FL190

TAKEOFF MINIMUMS
Rwys 1L/R: Standard with minimum climb of 483' per NM to 13000.
Rwys 8L/R: Standard with minimum climb of 310' per NM to 7000.
Rwys 19L/R: Standard with minimum climb of 400' per NM to 10000.
Rwys 26L/R: Standard with minimum climb of 350' per NM to 11000.



D-ATIS 132.4
CLNC DEL 118.0
CPDLC
GND CON 121.1 270.8 E of 1R/19L
121.9 254.3 W of 1R/19L
LAS VEGAS TOWER 118.75 257.8 (Rwys 1L/19R, 1R/19L)
119.9 257.8 (Rwys 8L/26R, 8R/26L)
LAS VEGAS DEP CON 125.9 307.25
RWBLL 2682 (Rwys 19L/R, 26L/R)
133.95 353.7 (Rwys 1L/R, 8L/R)

NOTE: For non-GPS equipped aircraft departing Rwys 1L/R, 19L/R, 26L/R: LAS, BLD, MMM, PGS, DRK, GCN, TBC, ZUN, INW and GUP DMEs must be operational for the WINSLOW TRANSITION.
NOTE: For non-GPS equipped aircraft departing Rwys 8L/R: LSV, LAS, BLD, MMM, PGS, DRK, GCN, TBC, ZUN, INW and GUP DMEs must be operational for the GALLUP TRANSITION.
NOTE: For non-GPS equipped aircraft departing Rwys 1L/R, 19L/R, 26L/R: BLD, LAS, MMM, PGS, DRK, FLG and INW DMEs must be operational for the WINSLOW TRANSITION.
NOTE: For non-GPS equipped aircraft departing Rwy 8L: LSV, LAS, BLD, MMM, DRK, FLG and INW DMEs must be operational for the WINSLOW TRANSITION.
NOTE: For non-GPS equipped aircraft departing Rwy 8R: LSV, LAS, MMM, PGS, DRK, FLG and INW DMEs must be operational for the WINSLOW TRANSITION.
NOTE: For non-GPS equipped aircraft departing Rwys 8L/R: LSV, LAS, MMM, GCN, PGS and DRK DMEs must be operational for the DRAKE TRANSITION.
NOTE: For non-GPS equipped aircraft departing Rwys 1L/R, 19L/R, 26L/R: BLD, LAS, MMM, GCN, PGS, and DRK DMEs must be operational for the WINSLOW TRANSITION.

NOTE: DME/DME/IRU or GPS required.
NOTE: RNAV 1.
NOTE: RADAR required.

NOTE: For non-GPS equipped aircraft departing Rwy 8L: LSV, LAS, BLD, MMM, DRK, FLG and INW DMEs must be operational for the WINSLOW TRANSITION.

NOTE: Chart not to scale.

(NARRATIVE ON FOLLOWING PAGE)