

VOR/DME GDM 110.6 Chan 43	APP CRS 347°	Rwy Idg TDZE Apt Elev	5000 998 1009
---	------------------------	-----------------------------	--

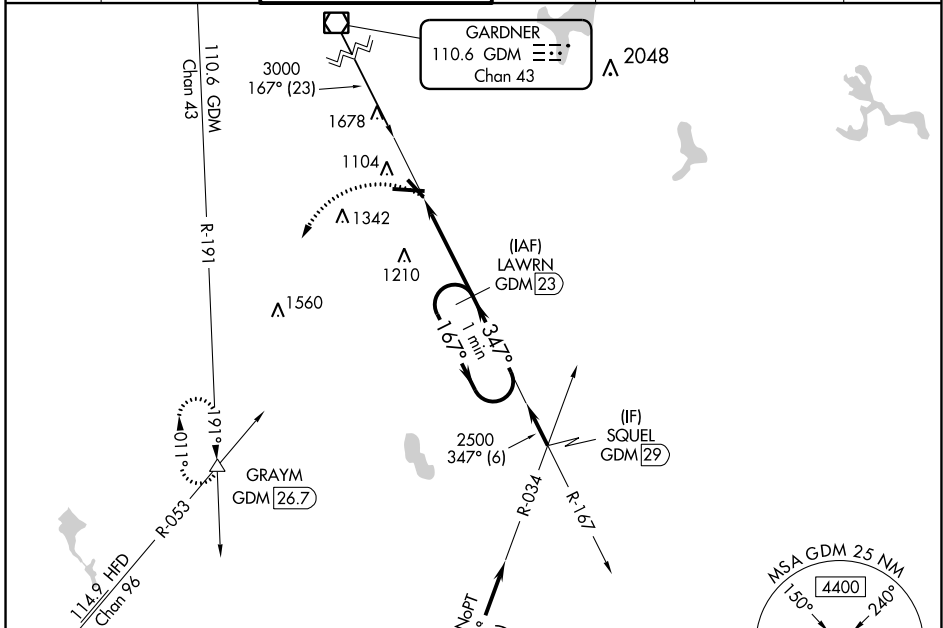
VOR/DME RWY 33

WORCESTER RGNL (ORH)

▼ When VGSi inop, Straight-in/Circling Rwy 33 procedure NA at night. Visibility reduction by helicopters NA. When local altimeter setting not received, use Bedford altimeter setting and increase all MDA 200 feet; increase S-33 Cat C/D visibility ½ mile and Circling Cat C visibility ¾ mile.

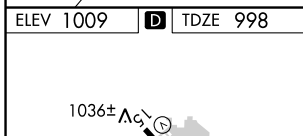
MISSED APPROACH: Climbing left turn to 3000 on heading 240° and GDM VOR/DME R-191 to GRAYM INT/GDM 26.7 DME and hold.

ATIS 126.55	YANKEE APP CON 119.0 327.1	WORCESTER TOWER ★ 120.5 (CTAF) 263.0	GND CON 123.85	CLNC DEL 128.65	CLNC DEL 119.0 (When twr closed)	UNICOM 122.95
-----------------------	--------------------------------------	--	--------------------------	---------------------------	---	-------------------------



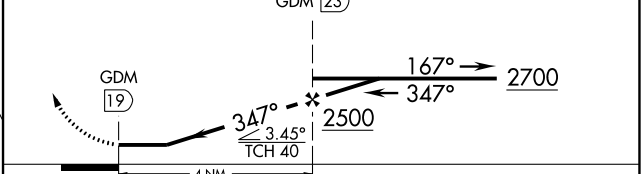
NE-1, 02 JAN 2020 to 30 JAN 2020

NE-1, 02 JAN 2020 to 30 JAN 2020



ELEV 1009	D	TDZE 998
TDZ/CL Rwy 11 REIL Rwys 15, 29 and 33 HIRL Rwy 11-29 MIRL Rwy 15-33		

3000 hdg 240° GDM R-191 GRAYM △ VGSi and descent angles not coincident (VGSi Angle 3.00/TCH 40). LAWRENCE GDM 23 One Minute Holding Pattern



CATEGORY	A	B	C	D
S-33	1520-1	522 (600-1)	1520-1½	522 (600-1½)
CIRCLING	1560-1 551 (600-1)	1640-1 631 (700-1)	1720-2 711 (800-2)	1980-3 971 (1000-3)