

WAAS CH <b>62829</b> <b>W17A</b>	APP CRS <b>175°</b>	Rwy Idg TDZE Apt Elev	<b>9000</b> <b>492</b> <b>542</b>
--	------------------------	-----------------------------	---

# RNAV (GPS) Y RWY 17L

AUSTIN-BERGSTROM INTL (AUS)

RNP APCH.

**RADAR** required for procedure entry.

For uncompensated Baro-VNAV systems, LNAV/VNAV NA below -6°C or above 54°C.

Simultaneous approach authorized. LNAV procedure NA during simultaneous operations.

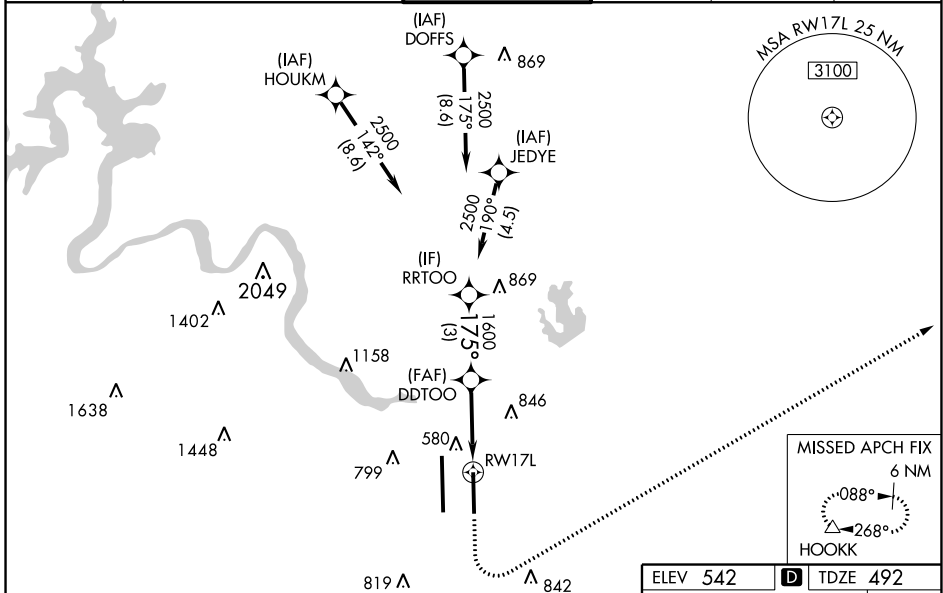
Use of FD or AP providing RNAV track guidance required during simultaneous operations.

For inop ALS, increase visibility LPV Cat E to RVR 4000, LNAV/VNAV Cat E to 1½ SM and LNAV Cats C/D/E to 1½ SM.



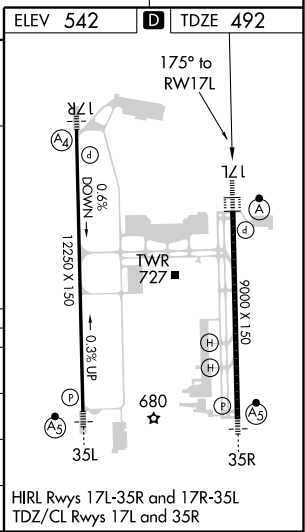
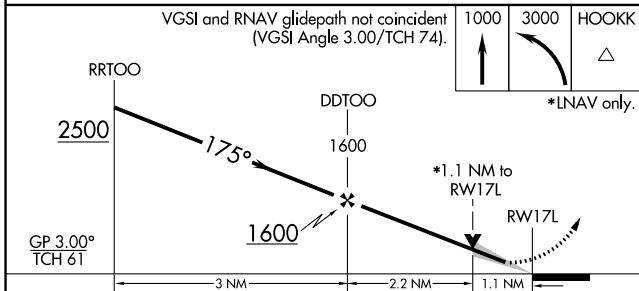
**MISSED APPROACH:**  
Climb to 1000 then climbing left turn to 3000 direct HOOKK and hold.

D-ATIS <b>124.4</b>	AUSTIN APP CON <b>127.225 317.65</b> (EAST) <b>120.875 270.25</b> (SOUTH) <b>119.0 370.85</b> (WEST)	AUSTIN TOWER <b>121.0 281.5</b>	GND CON <b>121.9 348.6</b>	CLNC DEL <b>125.5 263.0</b>	CPDLC
------------------------	---	------------------------------------	-------------------------------	--------------------------------	-------



SC-3, 02 JAN 2020 to 30 JAN 2020

SC-3, 02 JAN 2020 to 30 JAN 2020



ELEV 542	TDZE 492				
VGSI and RNAV glidepath not coincident (VGSI Angle 3.00/TCH 61).					
RRTOO	DDTOO	HOOKK			
2500	1600	1000	3000	HOOKK	
*LNAV only.					
GP 3.00°	TCH 61				
3 NM      2.2 NM      1.1 NM					
CATEGORY	A	B	C	D	E
LPV DA	692/18		200 (200-½)		
LNAV/VNAV DA	906/45		414 (400-¾)		
LNAV MDA	900/24	408 (400-½)	900/40		408 (400-¾)
CIRCLING	1040-1 498 (500-1)	1100-1 558 (600-1)	1200-1¾ 658 (700-1¾)	1200-2 658 (700-2)	1520-3 978 (1000-3)
HIRL Rwy 17L-35R and 17R-35L					
TDZ/CL Rwy 17L and 35R					