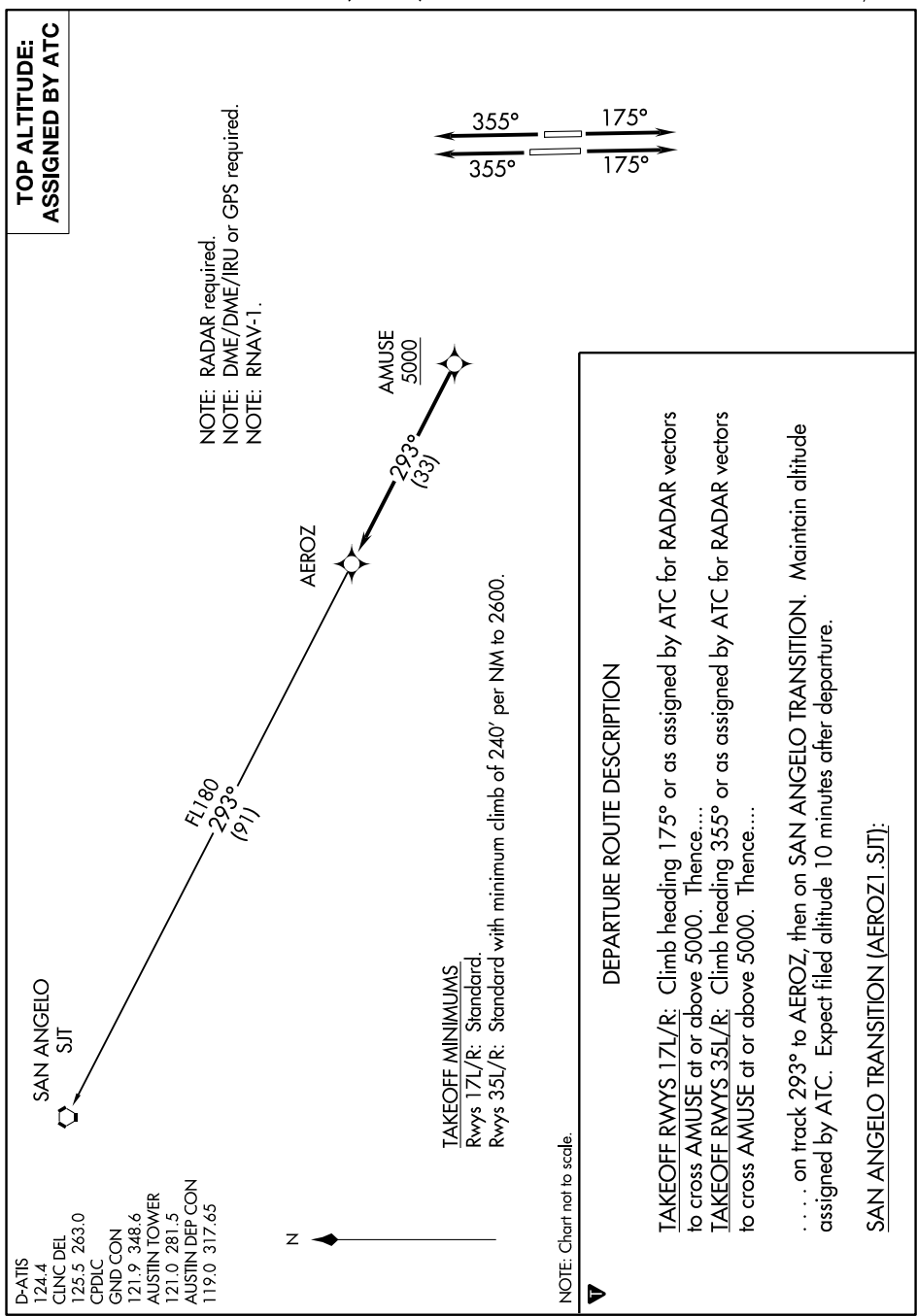
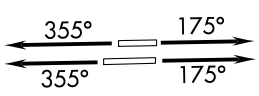


SC-3, 02 JAN 2020 to 30 JAN 2020



D-ATIS 124.4  
 CLNC DEL 125.5 263.0  
 CPDLC  
 GND CON 121.9 348.6  
 AUSTIN TOWER 121.0 281.5  
 AUSTIN DEP CON 119.0 317.65

NOTE: RADAR required.  
 NOTE: DME/DME/IRU or GPS required.  
 NOTE: RNAV-1.



TAKEOFF MINIMUMS  
 Rwys 17L/R: Standard.  
 Rwys 35L/R: Standard with minimum climb of 240' per NM to 2600.

NOTE: Chart not to scale.

DEPARTURE ROUTE DESCRIPTION

TAKEOFF RWYS 17L/R: Climb heading 175° or as assigned by ATC for RADAR vectors to cross AMUSE at or above 5000. Thence....  
 TAKEOFF RWYS 35L/R: Climb heading 355° or as assigned by ATC for RADAR vectors to cross AMUSE at or above 5000. Thence....  
 . . . on track 293° to AEROZ, then on SAN ANGELO TRANSITION. Maintain altitude assigned by ATC. Expect filed altitude 10 minutes after departure.

SAN ANGELO TRANSITION (AEROZ1.SJT):

SC-3, 02 JAN 2020 to 30 JAN 2020